

PRODUCT DATASHEET

Recessed Panel light
HYD-P7-5W 6500K



Application

- Office
- Kitchen
- Rest room
- Corridor
- Shop

Benefits

- Flicker free.
- The light is soft and bright
- DOB, integrated design, stable structure
- High light transmission mask to ensure uniform light

Features

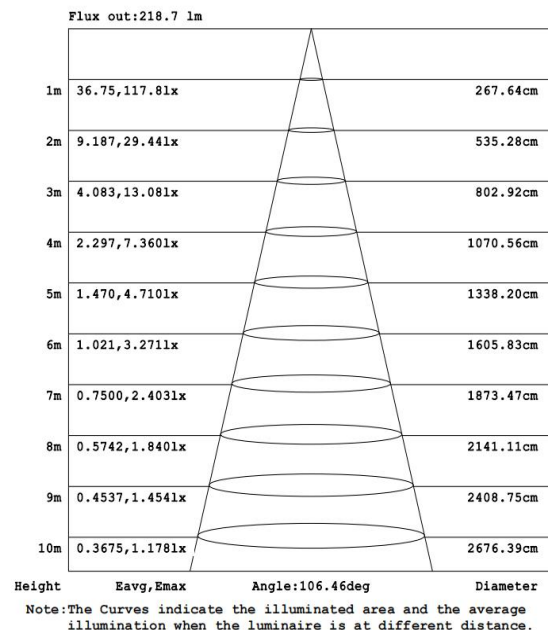
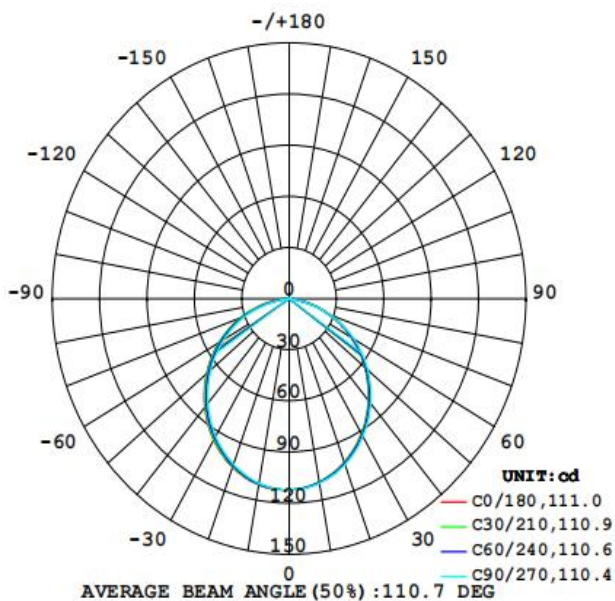
- Warranty 5 years
- Efficient and durable
- Easy and quick installation
- PC housing and transparent mask material, not easy to deform and change color

Electrical Data

| | |
|------------------------|-----------|
| Nominal wattage (W) | 5W |
| Nominal Voltage (V) | 220 |
| Mains Frequency (Hz) | 50 |
| Nominal Current (mA) | 41 |
| Power Factor λ | 0.55 |
| Operating mode | DOB |

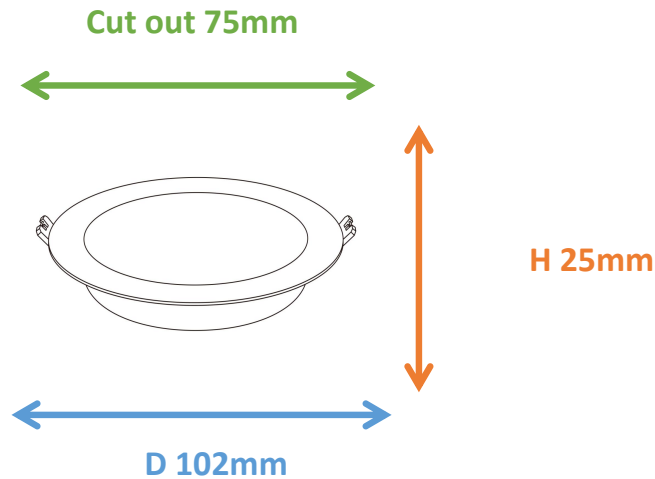
Photometrical data

| | |
|--------------------------------------|---------------|
| Luminous flux $\pm 10\%$ (lm) | 309 lm |
| Luminous efficacy | 61 lm/w |
| Color temperature | 6500K |
| Light color (designation) | Cold White |
| Color rendering index Ra | ≥ 80 |
| Standard deviation of color matching | ≤ 5 SDCM |
| Luminous intensity/cd | 112 |
| Flickering | Flicker free |
| Beam angle | 111 ° |



Dimensions & Weight

| | |
|--------------------|-----|
| Diameter (mm) | 102 |
| Height (mm) | 25 |
| Product weight (g) | 55 |



Material & Colors

| | |
|-----------------|-----------|
| Product color | All White |
| Housing color | White |
| Body material | PC |
| Cover material | PC |
| Mercury content | 0.0 mg |

Application & Mounting

| | |
|------------------------------|--------------------|
| Ambient temperature range | -20°C~+45 °C |
| Temperature range at storage | -25°C~+60 °C |
| Type of connection | Screwless terminal |
| Type of protection | IP20 |
| Dimmable | No |
| Mounting type | Recesse mounted |
| Mounting location | Ceiling |
| Application environment | Indoor |
| Cut size (mm) | 75 |
| LED module replaceable | Not replaceable |
| With light source | Yes |

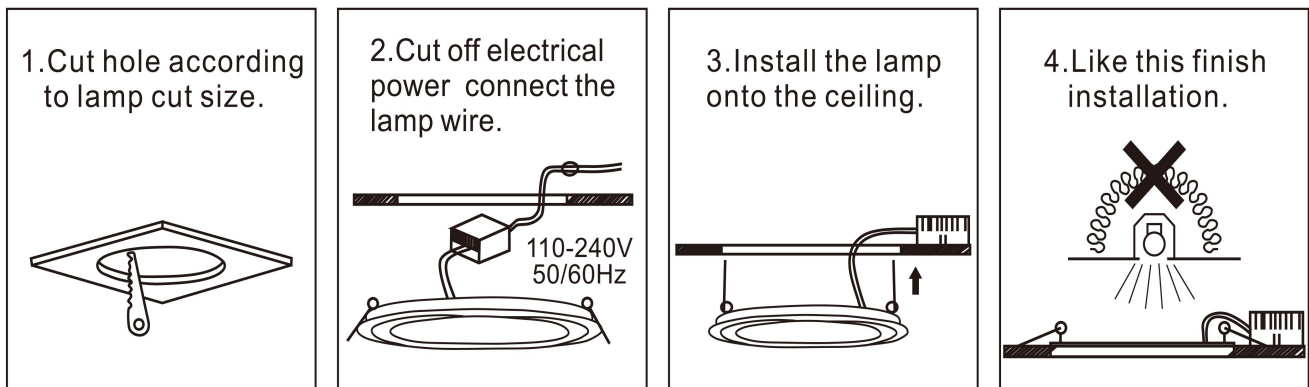
Certificates & Lifespan

| | |
|--------------|-----------------|
| Life (h) | 50,000 |
| Certificates | CB LVD EMC RoHS |
| Standards | ISO9001:2015 |

Logistical Data

| Product code | Dimensions (L*W*H) | Pcs/ carton | G.W. kg | Volume CBM |
|--------------|--------------------|-------------|---------|------------|
| HYD-P7-5W | 57*35*42.5 cm | 150 | ... | 0.08479 |

Installation Method



Disclaimer

Subject to change without notice. Errors and omission excepted. Always make sure to use the most recent release