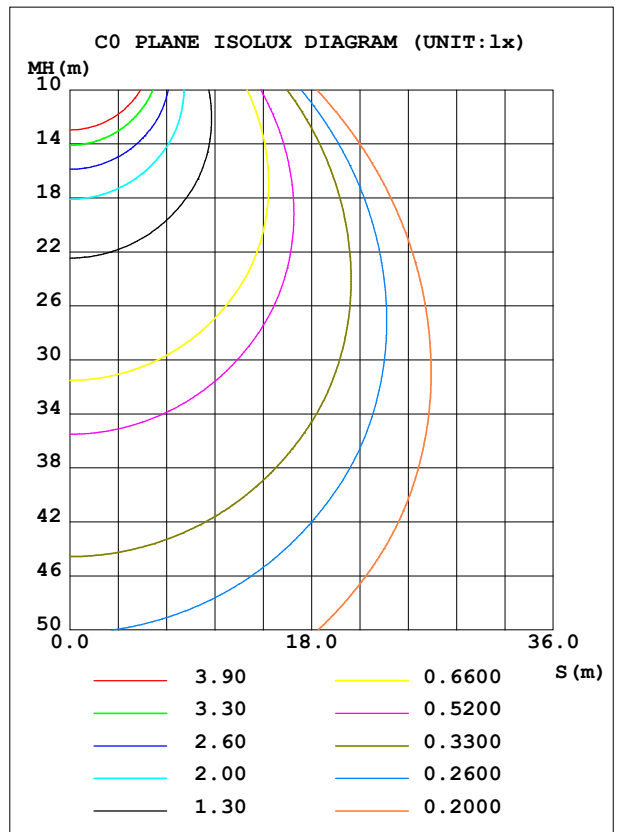
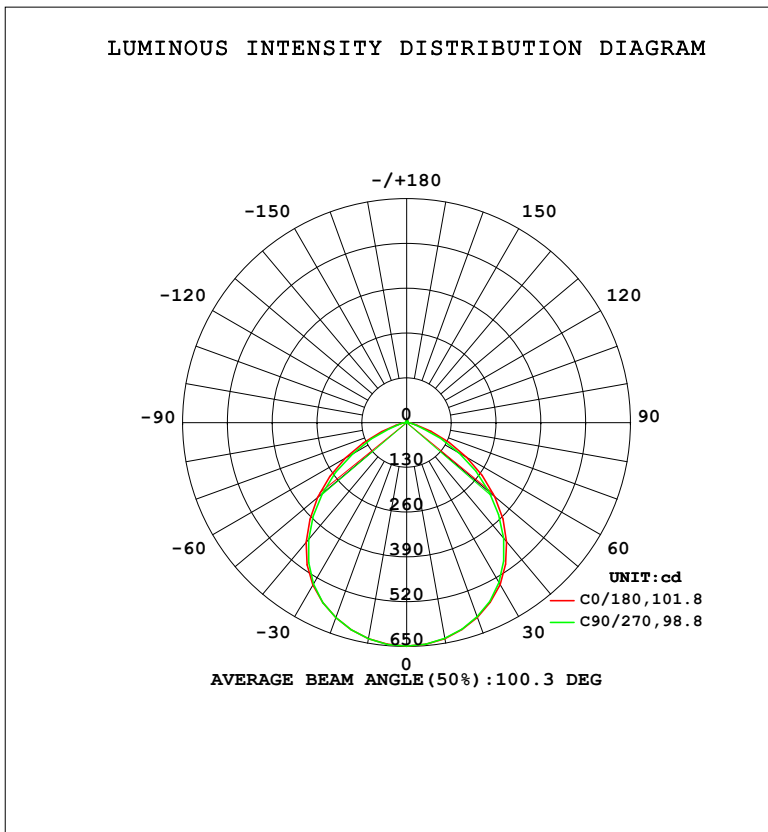


LUMINAIRE PHOTOMETRIC TEST REPORT

Test:U:220.35V I:0.1123A P:13.634W PF:0.5508 Freq:50.00Hz Lamp Flux:1531.13x1 lm		
NAME:	TYPE: 227	WEIGHT:
SPEC.:	DIM.:	SERIAL No.:
MFR.: EVERFINE	SUR.: 156.5mm	Shielding Angle:

DATA OF LAMP		PHOTOMETRIC DATA				Eff: 112.30 lm/W
MODEL	227R	I _{max} (cd)	648.7	S/MH (C0/180)	1.24	
NOMINAL POWER (W)	15	LOR (%)	100.0	S/MH (C90/270)	1.24	
RATED VOLTAGE (V)	220	TOTAL FLUX (lm)	1531.1	η UP, DN (C0-180)	0.5, 49.3	
NOMINAL FLUX (lm)	1531.13	CIE CLASS	DIRECT	η UP, DN (C180-360)	0.5, 49.7	
LAMPS INSIDE	1	η up (%)	1.0	CIBSE SHR NOM	1.25	
TEST VOLTAGE (V)	219.5	η down (%)	99.0	CIBSE SHR MAX	1.35	



C Range: 0 - 360DEG
 C Interval: 22.5DEG
 Test Speed: HIGH
 Temperature: 25.3°C
 Operators: DAMIN
 Test Date: 2023-11-16

γ Range: 0 - 180DEG
 γ Interval: 5.0DEG
 Test System: EVERFINE GO-2000B_V1 SYSTEM V2.00.473
 Humidity: 65.0%
 Test Distance: 9.401m [K=1.0000]
 Remarks:

ZONAL FLUX DIAGRAM

ZONAL FLUX DIAGRAM:

γ	C0	C45	C90	C135	C180	C225	C270	C315	γ	Φ zone	Φ total	%lum,lamp
10	636.6	636.1	636.0	636.5	637.1	637.4	637.3	637.3	0- 10	61.35	61.35	4.01,4.01
20	601.1	600.0	599.5	600.4	602.2	602.4	602.2	602.2	10- 20	175.5	236.8	15.5,15.5
30	543.2	540.8	536.4	541.3	544.2	544.2	541.3	544.1	20- 30	264.7	501.5	32.8,32.8
40	452.1	445.7	437.8	446.3	454.0	450.7	443.3	449.8	30- 40	311.2	812.7	53.1,53.1
50	333.9	324.4	313.7	325.6	337.3	330.6	320.0	329.9	40- 50	299.9	1113	72.7,72.7
60	201.5	190.3	176.8	191.9	205.7	195.0	182.2	195.1	50- 60	232.4	1345	87.8,87.8
70	75.57	64.59	52.02	66.56	77.45	68.44	56.26	69.07	60- 70	126.1	1471	96.1,96.1
80	17.17	15.16	13.86	15.40	17.64	16.41	15.29	16.44	70- 80	36.70	1508	98.5,98.5
90	0.5484	0.5212	0.4721	0.5252	0.6382	0.6133	0.5921	0.6059	80- 90	7.925	1516	99,99
100	0.9172	0.8705	0.8324	0.8772	1.139	1.088	1.057	1.084	90-100	0.8425	1517	99,99
110	1.555	1.477	1.448	1.488	1.824	1.749	1.715	1.756	100-110	1.371	1518	99.1,99.1
120	2.252	2.162	2.148	2.160	2.522	2.457	2.421	2.416	110-120	1.954	1520	99.3,99.3
130	2.860	2.835	2.830	2.832	3.171	3.119	3.127	3.143	120-130	2.365	1522	99.4,99.4
140	3.516	3.411	3.428	3.383	3.803	3.653	3.755	3.675	130-140	2.528	1525	99.6,99.6
150	4.034	4.036	4.068	4.019	4.292	4.224	4.238	4.238	140-150	2.412	1527	99.7,99.7
160	4.648	4.673	4.707	4.630	4.840	4.794	4.914	4.813	150-160	2.050	1529	99.9,99.9
170	5.203	5.238	5.221	5.199	5.347	5.323	5.378	5.340	160-170	1.418	1531	100,100
180	5.555	5.587	5.529	5.557	5.573	5.605	5.553	5.569	170-180	0.5169	1531	100,100
DEG	LUMINOUS INTENSITY:cd									UNIT:lm		

Conical surface Flux(90deg): 967.75 lm

%lum = 63.2%

%lamp = 63.2%

Conical surface Flux(130deg): 1422.3 lm

%lum = 92.9%

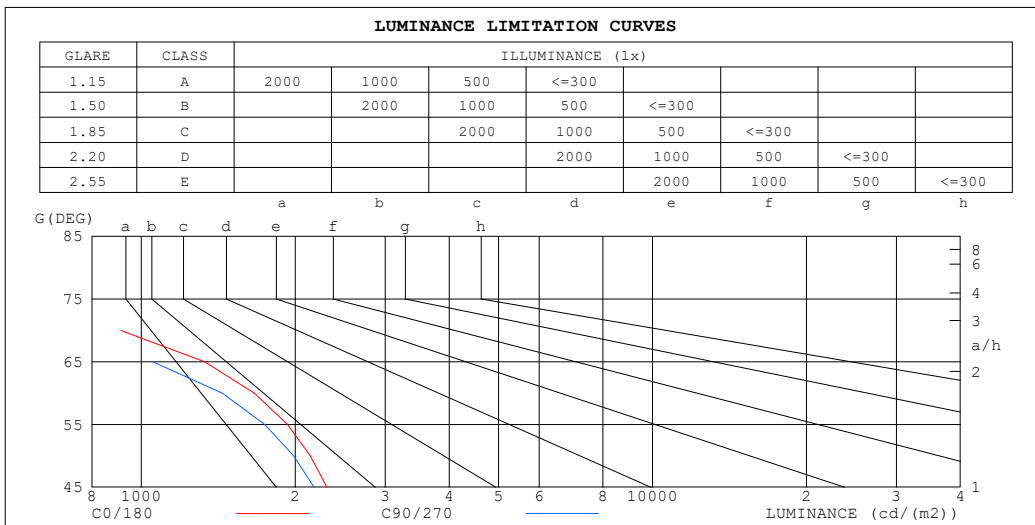
%lamp = 92.9%

C Range: 0 - 360DEG
 C Interval: 22.5DEG
 Test Speed: HIGH
 Temperature:25.3°C
 Operators:DAMIN
 Test Date:2023-11-16

γ Range: 0 - 180DEG
 γ Interval: 5.0DEG
 Test System:EVERFINE GO-2000B_V1 SYSTEM V2.00.473
 Humidity:65.0%
 Test Distance:9.401m [K=1.0000]
 Remarks:

LUMINANCE LIMITATION CURVES

Test:U:220.35V I:0.1123A P:13.634W PF:0.5508 Freq:50.00Hz Lamp Flux:1531.13x1 lm		
NAME:	TYPE: 227	WEIGHT:
SPEC.:	DIM.:	SERIAL No.:
MFR.: EVERFINE	SUR.: 156.5mm	Shielding Angle:



LUMINANCE cd/ (m2)		
G (DEG)	C0/180	C90/270
85	353	204
80	408	325
75	494	389
70	911	619
65	1330	1052
60	1662	1440
55	1931	1744
50	2142	1987
45	2306	2176

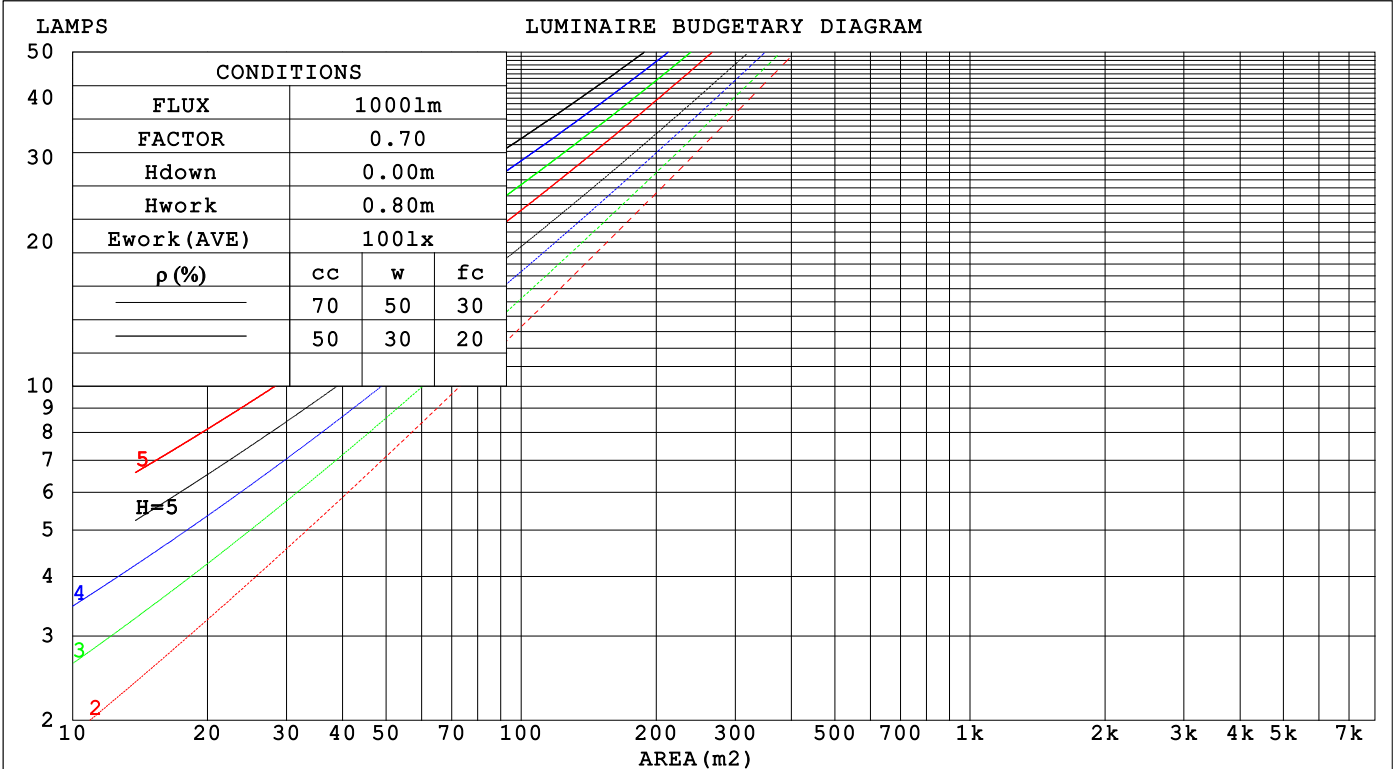
C Range: 0 - 360DEG
 C Interval: 22.5DEG
 Test Speed: HIGH
 Temperature:25.3°C
 Operators:DAMIN
 Test Date:2023-11-16

γ Range: 0 - 180DEG
 γ Interval: 5.0DEG
 Test System:EVERFINE GO-2000B_V1 SYSTEM V2.00.473
 Humidity:65.0%
 Test Distance:9.401m [K=1.0000]
 Remarks:

CU AND LUMINAIRE BUDGETARY ESTIMATE DIAGRAM

Test:U:220.35V I:0.1123A P:13.634W PF:0.5508 Freq:50.00Hz Lamp Flux:1531.13x1 lm		
NAME:	TYPE: 227	WEIGHT:
SPEC.:	DIM.:	SERIAL No.:
MFR.: EVERFINE	SUR.: 156.5mm	Shielding Angle:

ρcc	80%			70%			50%			30%			10%			0
ρw	50%	30%	10%	50%	30%	10%	50%	30%	10%	50%	30%	10%	50%	30%	10%	0
ρfc	20%			20%			20%			20%			20%			0
RCR	RCR:Room Cavity Ratio Coefficients of Utilization(CU)															
0.0	1.19	1.19	1.19	1.16	1.16	1.16	1.11	1.11	1.11	1.06	1.06	1.06	1.01	1.01	1.01	.99
1.0	1.06	1.03	.99	1.04	1.01	.98	.90	.97	.94	.96	.93	.91	.92	.90	.89	.86
2.0	.94	.88	.83	.92	.87	.82	.89	.84	.80	.85	.82	.78	.82	.79	.76	.74
3.0	.84	.77	.71	.82	.76	.70	.79	.74	.69	.76	.72	.68	.74	.70	.66	.64
4.0	.75	.67	.61	.74	.66	.61	.71	.65	.60	.69	.63	.59	.67	.62	.58	.56
5.0	.68	.59	.53	.66	.59	.53	.64	.57	.52	.62	.56	.52	.60	.55	.51	.49
6.0	.61	.53	.47	.60	.52	.47	.58	.51	.46	.57	.50	.46	.55	.49	.45	.43
7.0	.56	.47	.42	.55	.47	.41	.53	.46	.41	.52	.45	.41	.50	.45	.40	.38
8.0	.51	.43	.37	.50	.43	.37	.49	.42	.37	.48	.41	.37	.46	.41	.36	.35
9.0	.47	.39	.34	.46	.39	.34	.45	.38	.33	.44	.38	.33	.43	.37	.33	.31
10.0	.43	.36	.31	.43	.35	.31	.42	.35	.30	.41	.35	.30	.40	.34	.30	.28



C Range: 0 - 360DEG
 C Interval: 22.5DEG
 Test Speed: HIGH
 Temperature:25.3°C
 Operators:DAMIN
 Test Date:2023-11-16

γ Range: 0 - 180DEG
 γ Interval: 5.0DEG
 Test System:EVERFINE GO-2000B_V1 SYSTEM V2.00.473
 Humidity:65.0%
 Test Distance:9.401m [K=1.0000]
 Remarks:

WEC AND CCEC

Test:U:220.35V I:0.1123A P:13.634W PF:0.5508 Freq:50.00Hz								
Lamp Flux:1531.13x1 lm								
NAME:			TYPE: 227			WEIGHT:		
SPEC.:			DIM.:			SERIAL No.:		
MFR.: EVERFINE			SUR.: 156.5mm			Shielding Angle:		

ρ_{CC}	80%			70%			50%			30%			10%			0
ρ_w	50%	30%	10%	50%	30%	10%	50%	30%	10%	50%	30%	10%	50%	30%	10%	0
ρ_{fc}	20%			20%			20%			20%			20%			0
RCR	RCR:Room Cavity Ratio						Wall Exitance Coefficients (WEC)									
0.0																
1.0	.260	.148	.047	.252	.144	.046	.239	.137	.044	.226	.131	.042	.215	.124	.040	
2.0	.252	.138	.042	.246	.135	.042	.234	.130	.040	.223	.125	.039	.213	.120	.038	
3.0	.239	.127	.038	.234	.125	.038	.223	.121	.037	.213	.117	.036	.204	.113	.035	
4.0	.225	.117	.034	.220	.115	.034	.211	.112	.033	.202	.108	.033	.194	.105	.032	
5.0	.211	.107	.031	.207	.106	.031	.198	.103	.030	.191	.101	.030	.183	.098	.029	
6.0	.198	.099	.028	.194	.098	.028	.187	.096	.028	.180	.093	.027	.173	.091	.027	
7.0	.186	.092	.026	.182	.091	.026	.176	.089	.026	.170	.087	.025	.164	.085	.025	
8.0	.175	.085	.024	.172	.085	.024	.166	.083	.024	.160	.081	.023	.155	.080	.023	
9.0	.165	.080	.022	.162	.079	.022	.157	.078	.022	.152	.076	.022	.147	.075	.022	
10.0	.156	.075	.021	.153	.074	.021	.148	.073	.020	.144	.071	.020	.140	.070	.020	

ρ_{CC}	80%			70%			50%			30%			10%			0
ρ_w	50%	30%	10%	50%	30%	10%	50%	30%	10%	50%	30%	10%	50%	30%	10%	0
ρ_{fc}	20%			20%			20%			20%			20%			0
RCR	RCR:Room Cavity Ratio						Ceiling Cavity Exitance Coefficients (CCEC)									
0.0	.198	.198	.198	.169	.169	.169	.116	.116	.116	.066	.066	.066	.021	.021	.021	
1.0	.185	.164	.146	.158	.141	.126	.108	.097	.087	.062	.056	.051	.020	.018	.016	
2.0	.175	.140	.111	.150	.120	.096	.103	.083	.067	.059	.048	.039	.019	.016	.013	
3.0	.166	.122	.087	.143	.105	.075	.098	.073	.053	.057	.043	.031	.018	.014	.010	
4.0	.159	.108	.070	.136	.094	.061	.094	.065	.043	.054	.038	.025	.017	.012	.008	
5.0	.152	.098	.058	.130	.085	.050	.090	.059	.036	.052	.035	.021	.017	.011	.007	
6.0	.145	.089	.049	.124	.077	.043	.086	.054	.030	.050	.032	.018	.016	.010	.006	
7.0	.138	.082	.043	.119	.071	.037	.082	.050	.027	.048	.029	.016	.015	.010	.005	
8.0	.132	.076	.038	.114	.066	.033	.079	.047	.024	.046	.027	.014	.015	.009	.005	
9.0	.127	.072	.034	.109	.062	.030	.076	.044	.021	.044	.026	.013	.014	.008	.004	
10.0	.122	.067	.031	.105	.058	.027	.073	.041	.019	.042	.024	.012	.014	.008	.004	

C Range: 0 - 360DEG
 C Interval: 22.5DEG
 Test Speed: HIGH
 Temperature:25.3°C
 Operators:DAMIN
 Test Date:2023-11-16

γ Range: 0 - 180DEG
 γ Interval: 5.0DEG
 Test System:EVERFINE GO-2000B_V1 SYSTEM V2.00.473
 Humidity:65.0%
 Test Distance:9.401m [K=1.0000]
 Remarks:

UGR(Unified Glare Rating) Table

Test:U:220.35V I:0.1123A P:13.634W PF:0.5508 Freq:50.00Hz										
Lamp Flux:1531.13x1 lm										
NAME:			TYPE: 227				WEIGHT:			
SPEC.:			DIM.:				SERIAL No.:			
MFR.: EVERFINE			SUR.: 156.5mm				Shielding Angle:			
ceiling/cavity	0.7	0.7	0.5	0.5	0.3	0.7	0.7	0.5	0.5	0.3
walls	0.5	0.3	0.5	0.3	0.3	0.5	0.3	0.5	0.3	0.3
working plane	0.2	0.2	0.2	0.2	0.2	0.2	0.2	0.2	0.2	0.2
Room dimensions	Viewed crosswise					Viewed endwise				
x = 2H y = 2H	13.4	14.8	13.7	15.0	15.2	12.9	14.3	13.2	14.5	14.7
3H	13.8	15.1	14.1	15.3	15.6	13.1	14.4	13.4	14.6	14.9
4H	13.8	15.0	14.2	15.3	15.6	13.1	14.3	13.4	14.5	14.8
6H	13.8	14.9	14.1	15.2	15.5	13.0	14.2	13.4	14.4	14.7
8H	13.8	14.9	14.1	15.2	15.5	13.0	14.1	13.3	14.4	14.7
12H	13.7	14.8	14.1	15.1	15.4	13.0	14.0	13.3	14.3	14.6
4H 2H	13.6	14.8	13.9	15.1	15.3	13.2	14.4	13.5	14.6	14.9
3H	14.1	15.1	14.5	15.4	15.8	13.4	14.5	13.8	14.8	15.1
4H	14.1	15.1	14.5	15.4	15.8	13.5	14.4	13.8	14.7	15.1
6H	14.2	15.0	14.6	15.3	15.7	13.4	14.3	13.9	14.6	15.0
8H	14.1	14.9	14.6	15.3	15.7	13.4	14.2	13.8	14.6	15.0
12H	14.1	14.8	14.6	15.2	15.6	13.4	14.1	13.8	14.5	14.9
8H 4H	14.1	14.8	14.5	15.2	15.6	13.4	14.2	13.8	14.5	14.9
6H	14.1	14.7	14.6	15.2	15.6	13.4	14.1	13.9	14.5	14.9
8H	14.1	14.7	14.6	15.1	15.6	13.4	14.0	13.9	14.4	14.9
12H	14.1	14.6	14.6	15.1	15.6	13.4	13.9	13.9	14.3	14.8
12H 4H	14.0	14.7	14.5	15.1	15.5	13.4	14.1	13.8	14.5	14.9
6H	14.1	14.6	14.6	15.1	15.5	13.4	14.0	13.9	14.4	14.9
8H	14.1	14.6	14.6	15.0	15.5	13.4	13.9	13.9	14.3	14.8
Variations with the observer position at spacings(CIE Pub.117):										
S = 1.0H	+ 0.4 / - 0.4					+ 0.5 / - 0.6				
1.5H	+ 0.3 / - 0.4					+ 0.3 / - 0.6				
2.0H	+ 0.9 / - 1.0					+ 1.0 / - 1.3				

CIE Pub.117, 1531 lm Total Lamp Luminous Flux Correct (8log(F/F0) = 1.5)
 Area: 0.245 m2

C Range: 0 - 360DEG
 C Interval: 22.5DEG
 Test Speed: HIGH
 Temperature:25.3°C
 Operators:DAMIN
 Test Date:2023-11-16

γ Range: 0 - 180DEG
 γ Interval: 5.0DEG
 Test System:EVERFINE GO-2000B_V1 SYSTEM V2.00.473
 Humidity:65.0%
 Test Distance:9.401m [K=1.0000]
 Remarks:

UTILIZATION FACTORS TABLE

Test:U:220.35V I:0.1123A P:13.634W PF:0.5508 Freq:50.00Hz Lamp Flux:1531.13x1 lm		
NAME:	TYPE: 227	WEIGHT:
SPEC.:	DIM.:	SERIAL No.:
MFR.: EVERFINE	SUR.: 156.5mm	Shielding Angle:

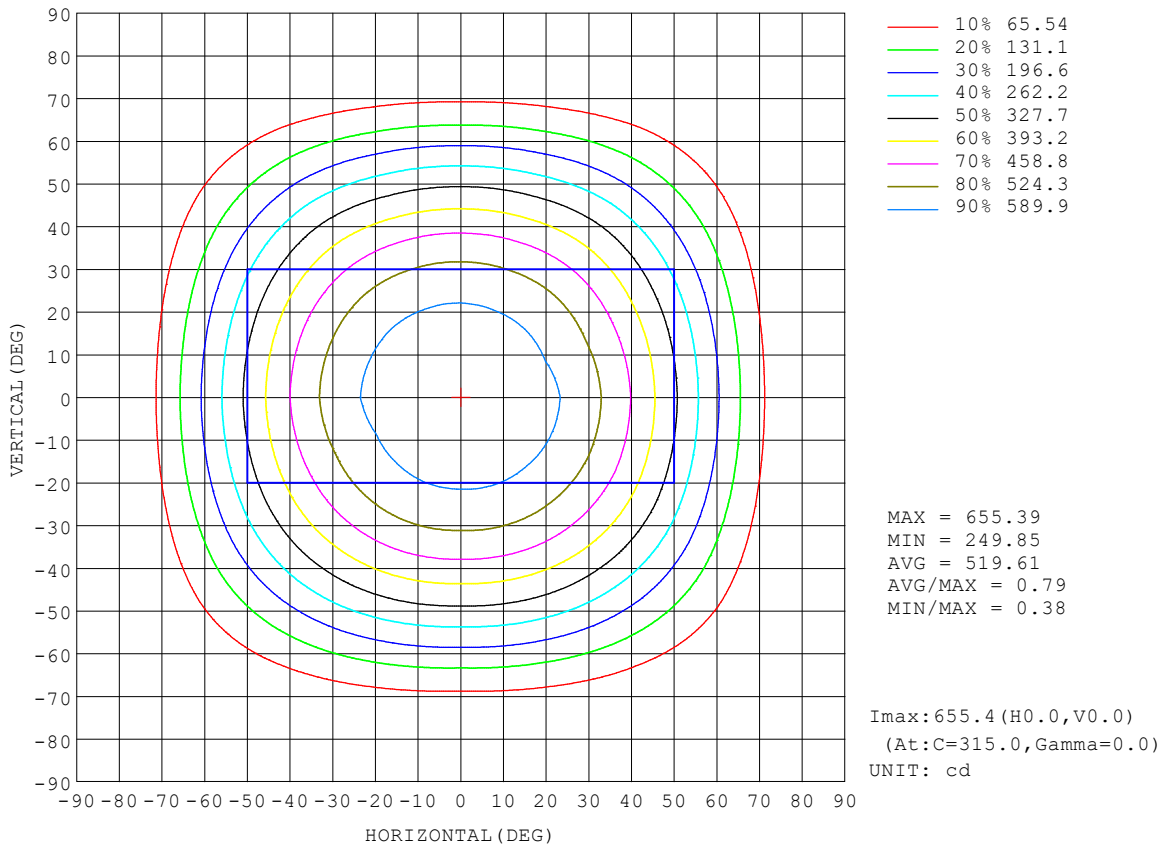
REFLECTANCE										
Ceiling	0.8	0.8	0.8	0.7	0.7	0.7	0.5	0.5	0.5	0
Walls	0.7	0.5	0.3	0.7	0.5	0.3	0.7	0.5	0.3	0
Working plane	0.2	0.2	0.2	0.2	0.2	0.2	0.2	0.2	0.2	0
ROOM INDEX	UTILIZATION FACTORS (PERCENT) $k(RI) \times RCR = 5$									
k = 0.60	62	51	45	61	51	45	60	50	44	38
0.80	72	62	55	71	61	55	70	60	54	48
1.00	81	71	65	80	70	64	78	71	64	57
1.25	88	79	72	86	78	72	84	76	71	64
1.50	93	84	78	91	83	77	88	81	76	69
2.00	99	91	86	97	90	85	94	88	84	76
2.50	102	95	90	100	94	89	96	91	87	80
3.00	105	99	95	103	98	93	99	95	91	83
4.00	108	104	100	106	102	98	102	98	95	87
5.00	110	106	103	108	104	101	103	100	98	89
ROOM INDEX	UF(total)									Direct
According to DIN EN 13032-2 2004			Suspended				SHRNOM = 1.25			

C Range: 0 - 360DEG
 C Interval: 22.5DEG
 Test Speed: HIGH
 Temperature:25.3°C
 Operators:DAMIN
 Test Date:2023-11-16

γ Range: 0 - 180DEG
 γ Interval: 5.0DEG
 Test System:EVERFINE GO-2000B_V1 SYSTEM V2.00.473
 Humidity:65.0%
 Test Distance:9.401m [K=1.0000]
 Remarks:

ISOCANDELA DIAGRAM

Test:U:220.35V I:0.1123A P:13.634W PF:0.5508 Freq:50.00Hz Lamp Flux:1531.13x1 lm		
NAME:	TYPE: 227	WEIGHT:
SPEC.:	DIM.:	SERIAL No.:
MFR.: EVERFINE	SUR.: 156.5mm	Shielding Angle:

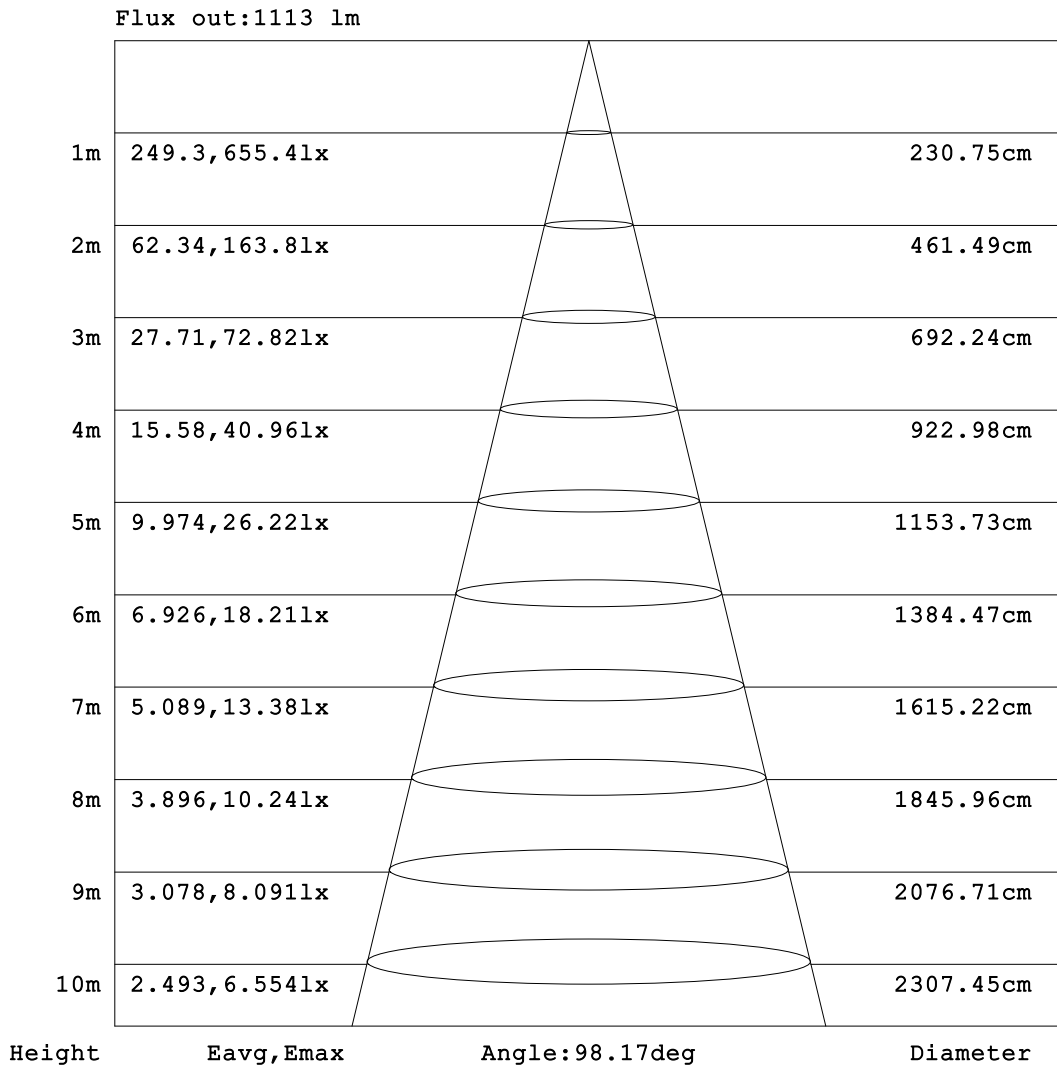


C Range: 0 - 360DEG
 C Interval: 22.5DEG
 Test Speed: HIGH
 Temperature: 25.3°C
 Operators: DAMIN
 Test Date: 2023-11-16

γ Range: 0 - 180DEG
 γ Interval: 5.0DEG
 Test System: EVERFINE GO-2000B_V1 SYSTEM V2.00.473
 Humidity: 65.0%
 Test Distance: 9.401m [K=1.0000]
 Remarks:

AAI Figure

Test:U:220.35V I:0.1123A P:13.634W PF:0.5508 Freq:50.00Hz Lamp Flux:1531.13x1 lm		
NAME:	TYPE: 227	WEIGHT:
SPEC.:	DIM.:	SERIAL No.:
MFR.: EVERFINE	SUR.: 156.5mm	Shielding Angle:



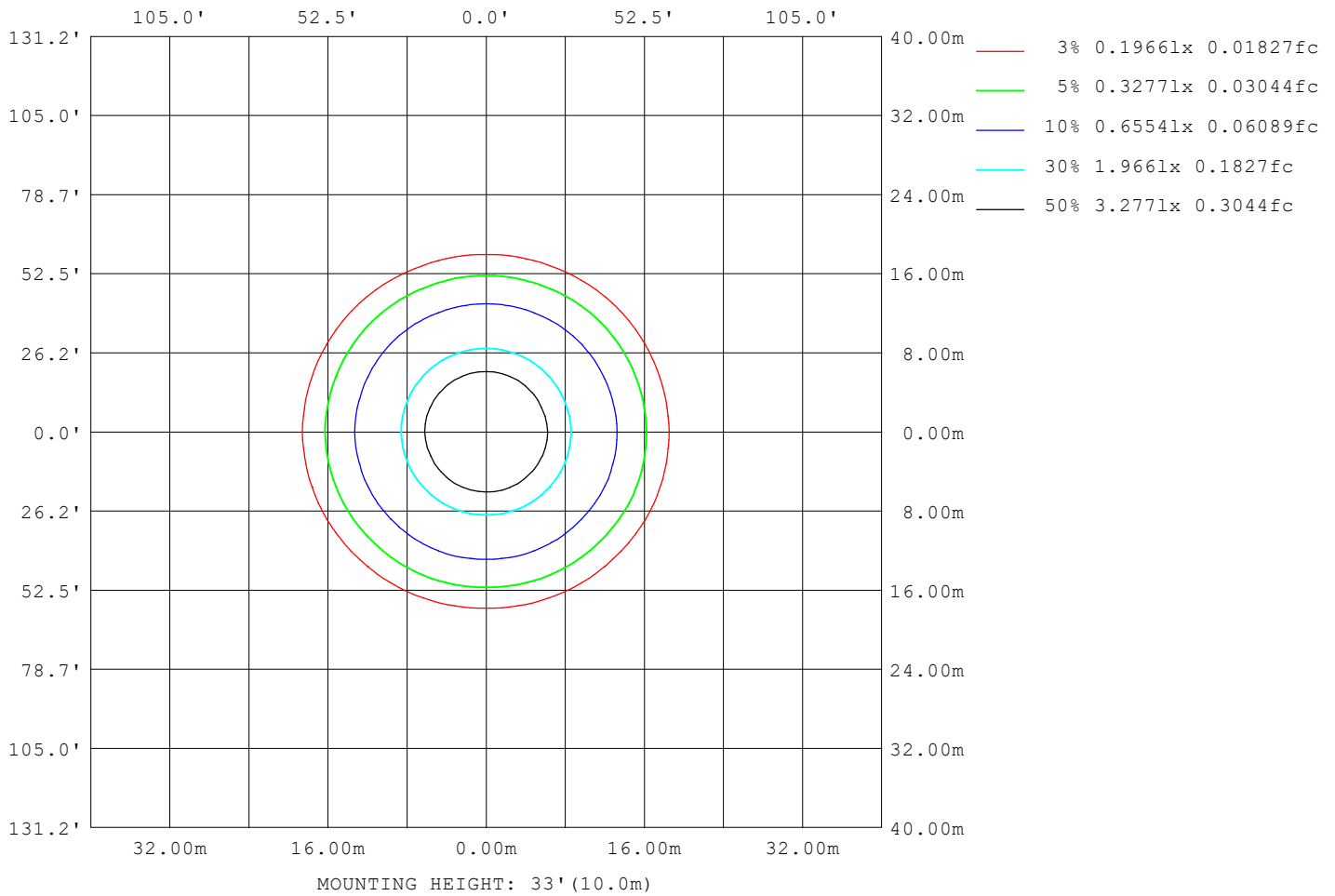
Note: The Curves indicate the illuminated area and the average illumination when the luminaire is at different distance.

C Range: 0 - 360DEG
 C Interval: 22.5DEG
 Test Speed: HIGH
 Temperature: 25.3°C
 Operators: DAMIN
 Test Date: 2023-11-16

γ Range: 0 - 180DEG
 γ Interval: 5.0DEG
 Test System: EVERFINE GO-2000B_V1 SYSTEM V2.00.473
 Humidity: 65.0%
 Test Distance: 9.401m [K=1.0000]
 Remarks:

ISOLUX DIAGRAM

Test:U:220.35V I:0.1123A P:13.634W PF:0.5508 Freq:50.00Hz Lamp Flux:1531.13x1 lm		
NAME:	TYPE: 227	WEIGHT:
SPEC.:	DIM.:	SERIAL No.:
MFR.: EVERFINE	SUR.: 156.5mm	Shielding Angle:



C Range: 0 - 360DEG
 C Interval: 22.5DEG
 Test Speed: HIGH
 Temperature:25.3°C
 Operators:DAMIN
 Test Date:2023-11-16

γ Range: 0 - 180DEG
 γ Interval: 5.0DEG
 Test System:EVERFINE GO-2000B_V1 SYSTEM V2.00.473
 Humidity:65.0%
 Test Distance:9.401m [K=1.0000]
 Remarks:

LED Avg.L Report

Test:U:220.35V I:0.1123A P:13.634W PF:0.5508 Freq:50.00Hz Lamp Flux:1531.13x1 lm		
NAME:	TYPE: 227	WEIGHT:
SPEC.:	DIM.:	SERIAL No.:
MFR.: EVERFINE	SUR.: 156.5mm	Shielding Angle:

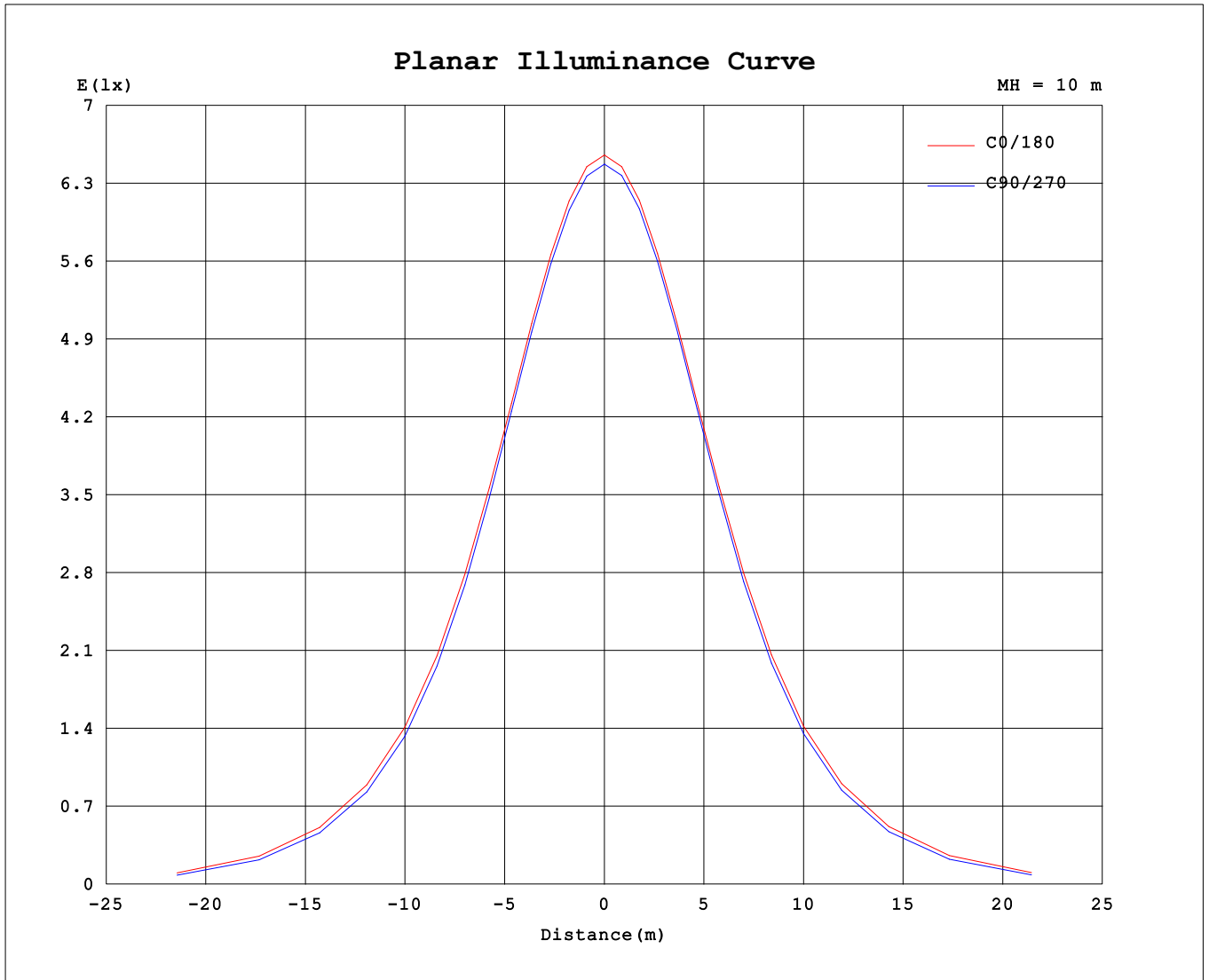
AvgL	cd/m2
L_0~180 (65) av	1330
L_0~180 (75) av	499
L_0~180 (85) av	357
L_90~270 (65) av	1079
L_90~270 (75) av	401
L_90~270 (85) av	236
L_45 (65) av	1219
L_45 (75) av	446
L_45 (85) av	290

Standard: GB/T 29293-2012

C Range: 0 - 360DEG
 C Interval: 22.5DEG
 Test Speed: HIGH
 Temperature:25.3°C
 Operators:DAMIN
 Test Date:2023-11-16

γ Range: 0 - 180DEG
 γ Interval: 5.0DEG
 Test System:EVERFINE GO-2000B_V1 SYSTEM V2.00.473
 Humidity:65.0%
 Test Distance:9.401m [K=1.0000]
 Remarks:

Planar Illuminance Curve



C Range: 0 - 360DEG
 C Interval: 22.5DEG
 Test Speed: HIGH
 Temperature: 25.3°C
 Operators: DAMIN
 Test Date: 2023-11-16

γ Range: 0 - 180DEG
 γ Interval: 5.0DEG
 Test System: EVERFINE GO-2000B_V1 SYSTEM V2.00.473
 Humidity: 65.0%
 Test Distance: 9.401m [K=1.0000]
 Remarks:

LUMINOUS DISTRIBUTION INTENSITY DATA

Test:U:220.35V I:0.1123A P:13.634W PF:0.5508 Freq:50.00Hz Lamp Flux:1531.13x1 lm		
NAME:	TYPE: 227	WEIGHT:
SPEC.:	DIM.:	SERIAL No.:
MFR.: EVERFINE	SUR.: 156.5mm	Shielding Angle:

Table--1

UNIT: cd

C (DEG) \ γ (DEG)	0	22.5	45	67.5	90	112.5	135	157.5	180	202.5	225	247.5	270	292.5	315	337.5			
0	649	649	649	649	649	649	649	649	649	649	649	649	649	649	649	649			
5	646	646	645	646	645	646	645	646	646	646	646	646	646	646	646	646			
10	637	637	636	636	636	636	636	637	637	637	637	637	637	637	637	637			
15	622	622	621	621	621	621	621	622	623	622	623	622	623	622	623	622			
20	601	601	600	600	600	600	600	602	602	602	602	602	602	602	602	602			
25	575	575	573	573	572	573	574	575	576	576	576	575	576	575	576	575			
30	543	543	541	539	536	539	541	544	544	544	544	541	541	541	544	543			
35	502	502	497	494	491	495	498	503	504	503	502	498	496	497	501	502			
40	452	452	446	441	438	442	446	453	454	453	451	445	443	445	450	452			
45	395	395	387	383	378	383	388	396	398	396	393	385	384	385	392	395			
50	334	334	324	319	314	320	326	335	337	334	331	321	320	321	330	333			
55	269	268	258	252	246	252	260	270	272	268	264	253	252	253	263	267			
60	202	201	190	182	177	183	192	203	206	201	195	185	182	185	195	200			
65	136	134	123	116	109	117	125	137	139	135	128	118	114	118	128	135			
70	75.6	74.1	64.6	57.1	52.0	58.0	66.6	75.8	77.4	75.2	68.4	59.4	56.3	60.0	69.1	74.7			
75	31.0	30.7	27.0	25.3	24.7	25.5	27.6	31.3	32.2	31.5	29.1	26.2	26.1	26.2	29.3	31.0			
80	17.2	16.7	15.2	14.4	13.9	14.5	15.4	17.0	17.6	17.1	16.4	15.4	15.3	15.4	16.4	17.0			
85	7.45	6.96	5.60	4.85	4.36	4.87	5.69	7.12	7.79	7.35	6.69	5.84	5.73	5.91	6.81	7.42			
90	0.55	0.62	0.52	0.48	0.47	0.48	0.53	0.60	0.64	0.99	0.61	0.59	0.59	0.58	0.61	1.07			
95	0.66	0.71	0.65	0.70	0.62	0.71	0.67	0.71	0.86	0.78	0.84	0.78	0.82	0.76	0.82	0.80			
100	0.92	0.96	0.87	0.90	0.83	0.90	0.88	0.96	1.14	1.06	1.09	1.01	1.06	1.00	1.08	1.08			
105	1.22	1.26	1.16	1.19	1.12	1.20	1.16	1.26	1.47	1.38	1.41	1.34	1.37	1.31	1.42	1.39			
110	1.55	1.58	1.48	1.51	1.45	1.51	1.49	1.58	1.82	1.72	1.75	1.67	1.71	1.66	1.76	1.75			
115	1.91	1.92	1.81	1.86	1.79	1.86	1.82	1.93	2.18	2.08	2.11	2.02	2.07	2.01	2.11	2.10			
120	2.25	2.26	2.16	2.21	2.15	2.20	2.16	2.27	2.52	2.41	2.46	2.36	2.42	2.36	2.42	2.42			
125	2.57	2.57	2.49	2.51	2.47	2.51	2.48	2.58	2.88	2.72	2.75	2.70	2.78	2.70	2.76	2.74			
130	2.86	2.90	2.83	2.84	2.83	2.87	2.83	2.89	3.17	3.05	3.12	2.99	3.13	3.00	3.14	3.08			
135	3.17	3.26	3.12	3.16	3.12	3.14	3.09	3.19	3.47	3.38	3.44	3.29	3.37	3.31	3.44	3.42			
140	3.52	3.50	3.41	3.46	3.43	3.44	3.38	3.52	3.80	3.64	3.65	3.58	3.76	3.60	3.68	3.65			
145	3.75	3.80	3.71	3.77	3.77	3.74	3.69	3.76	4.03	3.90	3.92	3.86	4.03	3.88	3.96	3.93			
150	4.03	4.14	4.04	4.10	4.07	4.09	4.02	4.12	4.29	4.18	4.22	4.13	4.24	4.18	4.24	4.20			
155	4.34	4.39	4.36	4.46	4.38	4.40	4.33	4.41	4.55	4.46	4.50	4.44	4.55	4.47	4.53	4.48			
160	4.65	4.71	4.67	4.78	4.71	4.72	4.63	4.68	4.84	4.74	4.79	4.73	4.91	4.76	4.81	4.75			
165	4.95	5.02	4.97	5.08	4.98	5.02	4.92	4.99	5.11	5.02	5.08	5.02	5.18	5.12	5.10	5.04			
170	5.20	5.31	5.24	5.34	5.22	5.26	5.20	5.27	5.35	5.28	5.32	5.25	5.38	5.30	5.34	5.26			
175	5.42	5.52	5.49	5.52	5.40	5.46	5.42	5.47	5.54	5.47	5.54	5.42	5.50	5.47	5.54	5.45			
180	5.55	5.59	5.59	5.60	5.53	5.54	5.56	5.57	5.57	5.57	5.60	5.54	5.55	5.54	5.57	5.53			

C Range: 0 - 360DEG
 C Interval: 22.5DEG
 Test Speed: HIGH
 Temperature:25.3°C
 Operators:DAMIN
 Test Date:2023-11-16

γ Range: 0 - 180DEG
 γ Interval: 5.0DEG
 Test System:EVERFINE GO-2000B_V1 SYSTEM V2.00.473
 Humidity:65.0%
 Test Distance:9.401m [K=1.0000]
 Remarks: