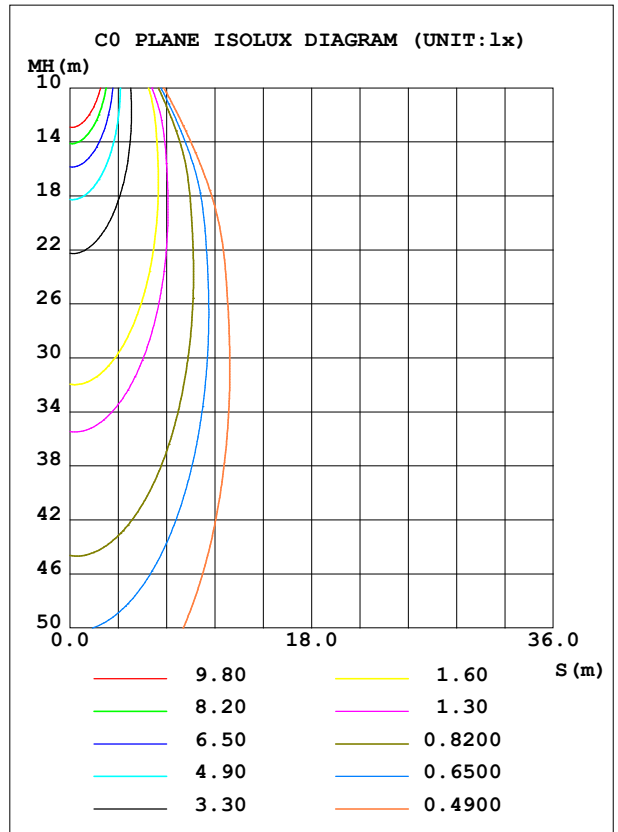
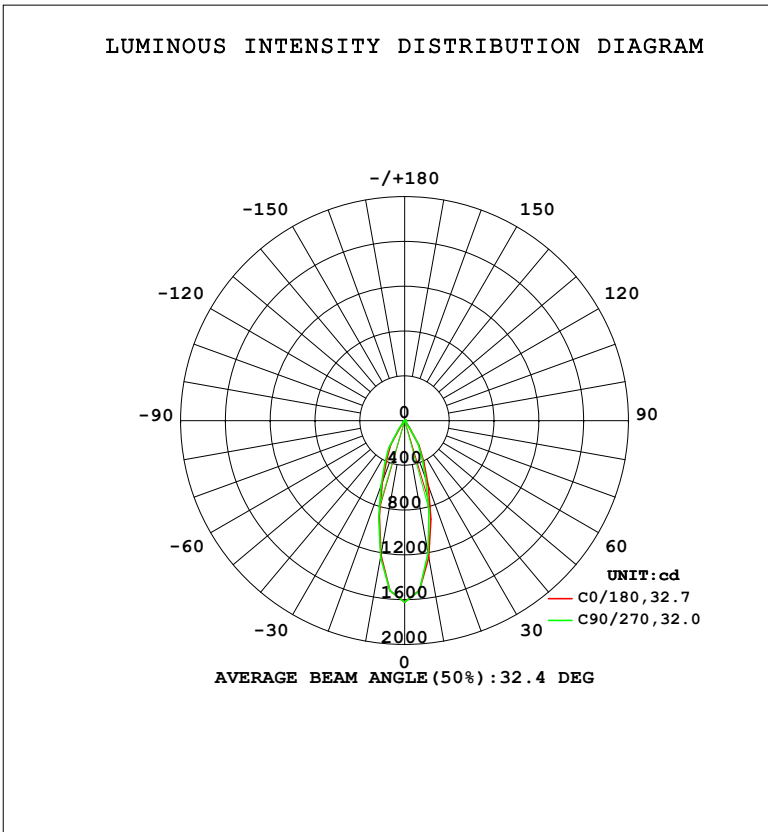


LUMINAIRE PHOTOMETRIC TEST REPORT

Test:U:220.32V I:0.0600A P:7.2393W PF:0.5473 Freq:50.00Hz Lamp Flux:698.638x1 lm		
NAME: 射灯	TYPE:	WEIGHT:
SPEC.:	DIM.:	SERIAL No.:
MFR.: EVERFINE	SUR.: 44.5mm	Shielding Angle:

DATA OF LAMP		PHOTOMETRIC DATA				Eff: 96.51 lm/W
MODEL	323	I _{max} (cd)	1621	S/MH (C0/180)	0.53	
NOMINAL POWER (W)	7	LOR (%)	100.0	S/MH (C90/270)	0.54	
RATED VOLTAGE (V)	220	TOTAL FLUX (lm)	698.64	η UP, DN (C0-180)	0.5, 48.8	
NOMINAL FLUX (lm)	698.638	CIE CLASS	DIRECT	η UP, DN (C180-360)	0.6, 50.2	
LAMPS INSIDE	1	η up (%)	1.1	CIBSE SHR NOM	0.50	
TEST VOLTAGE (V)	219.5	η down (%)	98.9	CIBSE SHR MAX	0.55	



C Range: 0 - 360DEG
 C Interval: 22.5DEG
 Test Speed: HIGH
 Temperature: 25.3°C
 Operators: DAMIN
 Test Date: 2023-11-10

γ Range: 0 - 180DEG
 γ Interval: 5.0DEG
 Test System: EVERFINE GO-2000B_V1 SYSTEM V2.00.473
 Humidity: 65.0%
 Test Distance: 9.401m [K=1.0000]
 Remarks:

ZONAL FLUX DIAGRAM

ZONAL FLUX DIAGRAM:

γ	C0	C45	C90	C135	C180	C225	C270	C315	γ	Φ zone	Φ total	%lum,lamp
10	1242	1236	1202	1198	1220	1241	1243	1239	0- 10	136.1	136.1	19.5,19.5
20	625.5	594.4	559.3	572.6	592.1	606.0	626.4	636.9	10- 20	247.9	383.9	55,55
30	260.5	244.5	240.8	243.7	252.2	256.8	285.8	287.0	20- 30	188.0	572.0	81.9,81.9
40	23.01	22.67	20.89	21.03	21.80	22.11	24.63	25.31	30- 40	67.90	639.9	91.6,91.6
50	15.90	16.41	16.51	16.29	16.28	16.10	15.91	16.08	40- 50	14.25	654.1	93.6,93.6
60	13.03	13.17	13.09	13.21	13.21	13.01	12.88	12.82	50- 60	13.08	667.2	95.5,95.5
70	9.218	9.321	9.447	9.579	9.504	9.327	8.995	8.818	60- 70	11.15	678.3	97.1,97.1
80	6.731	7.127	7.354	7.456	7.317	6.972	6.620	6.466	70- 80	8.551	686.9	98.3,98.3
90	0.0545	0.0511	0.0450	0.0446	0.0478	0.0421	0.0422	0.0424	80- 90	4.328	691.2	98.9,98.9
100	0.0359	0.0300	0.0362	0.0302	0.0598	0.0661	0.0603	0.0605	90-100	0.0471	691.3	98.9,98.9
110	0.0596	0.0599	0.0602	0.0603	0.1736	0.1685	0.1630	0.1575	100-110	0.0720	691.3	99,99
120	0.3581	0.3660	0.3912	0.3864	0.5684	0.5473	0.5309	0.5266	110-120	0.2631	691.6	99,99
130	1.039	1.062	1.114	1.099	1.406	1.365	1.321	1.325	120-130	0.7183	692.3	99.1,99.1
140	2.168	2.209	2.253	2.229	2.643	2.597	2.545	2.559	130-140	1.381	693.7	99.3,99.3
150	3.286	3.315	3.362	3.312	3.688	3.641	3.611	3.628	140-150	1.855	695.6	99.6,99.6
160	3.747	3.761	3.779	3.688	3.872	3.827	3.905	3.887	150-160	1.712	697.3	99.8,99.8
170	3.520	3.545	3.550	3.471	3.442	3.382	3.483	3.494	160-170	1.045	698.3	100,100
180	3.328	3.340	3.291	3.349	3.305	3.292	3.260	3.319	170-180	0.3236	698.6	100,100
DEG	LUMINOUS INTENSITY:cd									UNIT:lm		

Conical surface Flux(90deg): 647.3 lm

%lum = 92.7%

%lamp = 92.7%

Conical surface Flux(130deg): 673.12 lm

%lum = 96.3%

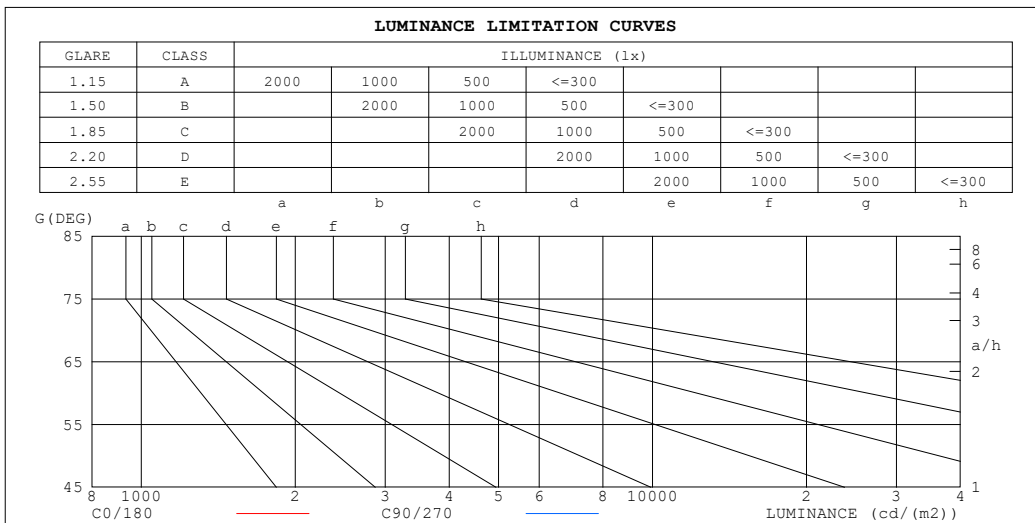
%lamp = 96.3%

C Range: 0 - 360DEG
 C Interval: 22.5DEG
 Test Speed: HIGH
 Temperature:25.3°C
 Operators:DAMIN
 Test Date:2023-11-10

γ Range: 0 - 180DEG
 γ Interval: 5.0DEG
 Test System:EVERFINE GO-2000B_V1 SYSTEM V2.00.473
 Humidity:65.0%
 Test Distance:9.401m [K=1.0000]
 Remarks:

LUMINANCE LIMITATION CURVES

Test:U:220.32V I:0.0600A P:7.2393W PF:0.5473 Freq:50.00Hz Lamp Flux:698.638x1 lm		
NAME: 射灯	TYPE:	WEIGHT:
SPEC.:	DIM.:	SERIAL No.:
MFR.: EVERFINE	SUR.: 44.5mm	Shielding Angle:



LUMINANCE cd/(m2)		
G (DEG)	C0/180	C90/270
85	719	726
80	558	605
75	439	455
70	388	394
65	383	383
60	375	374
55	363	363
50	356	367
45	348	353

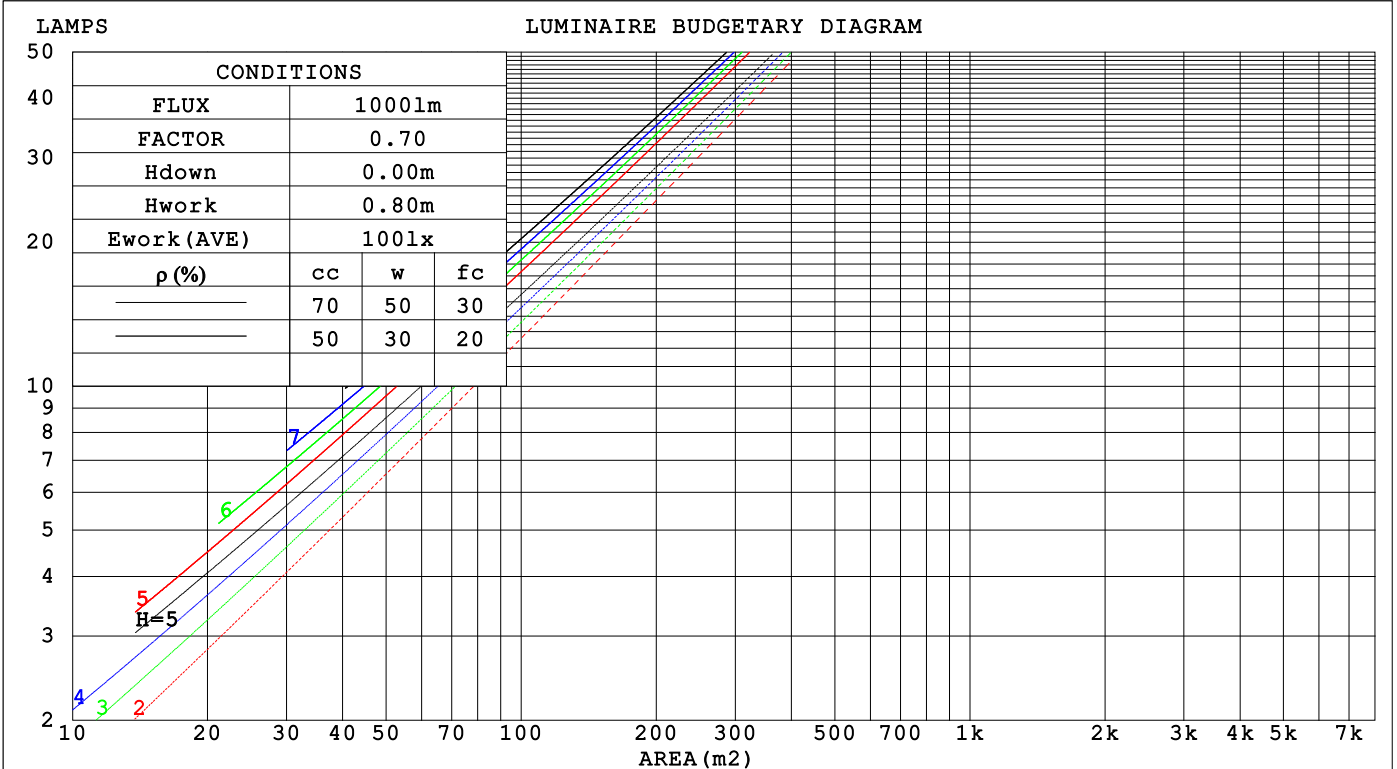
C Range: 0 - 360DEG
 C Interval: 22.5DEG
 Test Speed: HIGH
 Temperature:25.3°C
 Operators:DAMIN
 Test Date:2023-11-10

γ Range: 0 - 180DEG
 γ Interval: 5.0DEG
 Test System:EVERFINE GO-2000B_V1 SYSTEM V2.00.473
 Humidity:65.0%
 Test Distance:9.401m [K=1.0000]
 Remarks:

CU AND LUMINAIRE BUDGETARY ESTIMATE DIAGRAM

Test:U:220.32V I:0.0600A P:7.2393W PF:0.5473 Freq:50.00Hz Lamp Flux:698.638x1 lm		
NAME: 射灯	TYPE:	WEIGHT:
SPEC.:	DIM.:	SERIAL No.:
MFR.: EVERFINE	SUR.: 44.5mm	Shielding Angle:

ρ_{cc}	80%			70%			50%			30%			10%			0
ρ_w	50%	30%	10%	50%	30%	10%	50%	30%	10%	50%	30%	10%	50%	30%	10%	0
ρ_{fc}	20%			20%			20%			20%			20%			0
RCR	RCR:Room Cavity Ratio Coefficients of Utilization(CU)															
0.0	1.19	1.19	1.19	1.16	1.16	1.16	1.11	1.11	1.11	1.06	1.06	1.06	1.01	1.01	1.01	.99
1.0	1.11	1.08	1.06	1.08	1.06	1.04	1.04	1.02	1.01	1.00	.99	.97	.97	.95	.94	.93
2.0	1.03	.90	.96	1.02	.98	.95	.98	.95	.93	.95	.93	.91	.92	.90	.89	.87
3.0	.97	.93	.89	.96	.92	.88	.93	.89	.87	.91	.88	.85	.88	.86	.84	.82
4.0	.92	.87	.83	.91	.86	.82	.88	.84	.81	.86	.83	.80	.84	.82	.79	.78
5.0	.87	.82	.78	.86	.81	.77	.84	.80	.77	.82	.79	.76	.81	.78	.75	.74
6.0	.83	.77	.73	.82	.77	.73	.80	.76	.73	.79	.75	.72	.78	.74	.72	.70
7.0	.79	.73	.70	.78	.73	.69	.77	.72	.69	.76	.72	.69	.74	.71	.68	.67
8.0	.75	.70	.66	.75	.70	.66	.74	.69	.66	.73	.68	.65	.72	.68	.65	.64
9.0	.72	.67	.63	.72	.67	.63	.71	.66	.63	.70	.66	.63	.69	.65	.62	.61
10.0	.69	.64	.61	.69	.64	.60	.68	.63	.60	.67	.63	.60	.66	.63	.60	.59



C Range: 0 - 360DEG
 C Interval: 22.5DEG
 Test Speed: HIGH
 Temperature:25.3°C
 Operators:DAMIN
 Test Date:2023-11-10

γ Range: 0 - 180DEG
 γ Interval: 5.0DEG
 Test System:EVERFINE GO-2000B_V1 SYSTEM V2.00.473
 Humidity:65.0%
 Test Distance:9.401m [K=1.0000]
 Remarks:

WEC AND CCEC

Test:U:220.32V I:0.0600A P:7.2393W PF:0.5473 Freq:50.00Hz								
Lamp Flux:698.638x1 lm								
NAME: 射灯			TYPE:			WEIGHT:		
SPEC.:			DIM.:			SERIAL No.:		
MFR.: EVERFINE			SUR.: 44.5mm			Shielding Angle:		

ρ_{CC}	80%			70%			50%			30%			10%			0
ρ_w	50%	30%	10%	50%	30%	10%	50%	30%	10%	50%	30%	10%	50%	30%	10%	0
ρ_{fc}	20%			20%			20%			20%			20%			0
RCR	RCR:Room Cavity Ratio						Wall Exitance Coefficients (WEC)									
0.0																
1.0	.177	.101	.032	.170	.097	.031	.157	.090	.029	.145	.084	.027	.134	.078	.025	
2.0	.165	.090	.028	.159	.087	.027	.148	.082	.026	.137	.077	.024	.128	.072	.023	
3.0	.154	.082	.024	.149	.080	.024	.139	.075	.023	.130	.071	.022	.122	.068	.021	
4.0	.144	.075	.022	.140	.073	.022	.131	.070	.021	.124	.067	.020	.117	.064	.019	
5.0	.136	.069	.020	.132	.068	.020	.125	.065	.019	.118	.062	.019	.112	.060	.018	
6.0	.128	.064	.018	.125	.063	.018	.119	.061	.018	.113	.059	.017	.107	.057	.017	
7.0	.122	.060	.017	.119	.059	.017	.113	.057	.016	.108	.055	.016	.103	.054	.016	
8.0	.116	.057	.016	.113	.056	.016	.108	.054	.015	.104	.053	.015	.099	.051	.015	
9.0	.110	.053	.015	.108	.053	.015	.104	.051	.015	.100	.050	.014	.096	.049	.014	
10.0	.106	.051	.014	.104	.050	.014	.100	.049	.014	.096	.048	.014	.092	.046	.013	

ρ_{CC}	80%			70%			50%			30%			10%			0
ρ_w	50%	30%	10%	50%	30%	10%	50%	30%	10%	50%	30%	10%	50%	30%	10%	0
ρ_{fc}	20%			20%			20%			20%			20%			0
RCR	RCR:Room Cavity Ratio						Ceiling Cavity Exitance Coefficients (CCEC)									
0.0	.199	.199	.199	.170	.170	.170	.116	.116	.116	.067	.067	.067	.021	.021	.021	
1.0	.179	.165	.153	.153	.142	.132	.105	.098	.091	.060	.057	.053	.019	.018	.017	
2.0	.163	.141	.122	.140	.121	.105	.096	.084	.073	.055	.049	.043	.018	.016	.014	
3.0	.150	.122	.099	.129	.105	.086	.088	.073	.060	.051	.043	.035	.016	.014	.012	
4.0	.139	.107	.082	.119	.092	.071	.082	.064	.050	.048	.038	.030	.015	.012	.010	
5.0	.130	.095	.070	.111	.082	.061	.077	.058	.043	.044	.034	.025	.014	.011	.008	
6.0	.122	.086	.060	.105	.074	.052	.072	.052	.037	.042	.031	.022	.014	.010	.007	
7.0	.115	.078	.052	.099	.067	.045	.068	.047	.032	.040	.028	.019	.013	.009	.006	
8.0	.108	.071	.046	.093	.062	.040	.065	.044	.028	.038	.026	.017	.012	.008	.006	
9.0	.103	.066	.041	.089	.057	.036	.062	.040	.025	.036	.024	.015	.012	.008	.005	
10.0	.098	.062	.037	.085	.053	.032	.059	.038	.023	.034	.022	.014	.011	.007	.005	

C Range: 0 - 360DEG
 C Interval: 22.5DEG
 Test Speed: HIGH
 Temperature:25.3°C
 Operators:DAMIN
 Test Date:2023-11-10

γ Range: 0 - 180DEG
 γ Interval: 5.0DEG
 Test System:EVERFINE GO-2000B_V1 SYSTEM V2.00.473
 Humidity:65.0%
 Test Distance:9.401m [K=1.0000]
 Remarks:

UGR(Unified Glare Rating) Table

Test:U:220.32V I:0.0600A P:7.2393W PF:0.5473 Freq:50.00Hz										
Lamp Flux:698.638x1 lm										
NAME: 射灯			TYPE:				WEIGHT:			
SPEC.:			DIM.:				SERIAL No.:			
MFR.: EVERFINE			SUR.: 44.5mm				Shielding Angle:			
ceiling/cavity	0.7	0.7	0.5	0.5	0.3	0.7	0.7	0.5	0.5	0.3
walls	0.5	0.3	0.5	0.3	0.3	0.5	0.3	0.5	0.3	0.3
working plane	0.2	0.2	0.2	0.2	0.2	0.2	0.2	0.2	0.2	0.2
Room dimensions	Viewed crosswise					Viewed endwise				
x = 2H y = 2H	4.8	5.6	5.0	5.8	6.0	4.2	5.1	4.5	5.3	5.5
3H	6.1	6.9	6.4	7.1	7.3	5.8	6.6	6.1	6.8	7.0
4H	7.0	7.8	7.3	8.0	8.2	6.9	7.6	7.1	7.8	8.1
6H	8.2	8.9	8.5	9.1	9.4	8.2	8.9	8.5	9.2	9.4
8H	8.8	9.5	9.2	9.8	10.1	8.9	9.6	9.2	9.8	10.1
12H	9.3	9.9	9.6	10.2	10.5	9.3	10.0	9.7	10.3	10.6
4H 2H	5.3	6.0	5.6	6.3	6.5	4.8	5.6	5.1	5.8	6.1
3H	6.9	7.5	7.2	7.8	8.1	6.7	7.3	7.0	7.6	7.9
4H	8.0	8.6	8.4	8.9	9.3	8.0	8.6	8.3	8.9	9.2
6H	9.4	10.0	9.8	10.3	10.7	9.6	10.1	10.0	10.4	10.8
8H	10.2	10.7	10.7	11.1	11.5	10.4	10.9	10.8	11.2	11.6
12H	10.7	11.2	11.2	11.6	12.0	10.9	11.3	11.3	11.7	12.1
8H 4H	8.6	9.1	9.0	9.4	9.8	8.5	9.0	8.9	9.4	9.8
6H	10.3	10.7	10.7	11.1	11.6	10.4	10.8	10.9	11.2	11.7
8H	11.3	11.6	11.7	12.1	12.5	11.4	11.7	11.8	12.2	12.6
12H	11.8	12.2	12.3	12.6	13.1	12.0	12.3	12.5	12.7	13.2
12H 4H	8.7	9.2	9.1	9.6	10.0	8.7	9.1	9.1	9.5	9.9
6H	10.5	10.9	11.0	11.3	11.8	10.7	11.0	11.1	11.5	11.9
8H	11.6	11.9	12.0	12.3	12.8	11.7	12.0	12.2	12.4	12.9
Variations with the observer position at spacings(CIE Pub.117):										
S = 1.0H	+ 0.1 / - 0.2					+ 0.1 / - 0.2				
1.5H	+ 0.2 / - 0.2					+ 0.2 / - 0.2				
2.0H	+ 0.4 / - 0.6					+ 0.4 / - 0.6				

CIE Pub.117, 698.6 lm Total Lamp Luminous Flux Correct (8log(F/F0) = -1.2)
 Area: 0.07 m2

C Range: 0 - 360DEG
 C Interval: 22.5DEG
 Test Speed: HIGH
 Temperature:25.3°C
 Operators:DAMIN
 Test Date:2023-11-10

γ Range: 0 - 180DEG
 γ Interval: 5.0DEG
 Test System:EVERFINE GO-2000B_V1 SYSTEM V2.00.473
 Humidity:65.0%
 Test Distance:9.401m [K=1.0000]
 Remarks:

UTILIZATION FACTORS TABLE

Test:U:220.32V I:0.0600A P:7.2393W PF:0.5473 Freq:50.00Hz Lamp Flux:698.638x1 lm		
NAME: 射灯	TYPE:	WEIGHT:
SPEC.:	DIM.:	SERIAL No.:
MFR.: EVERFINE	SUR.: 44.5mm	Shielding Angle:

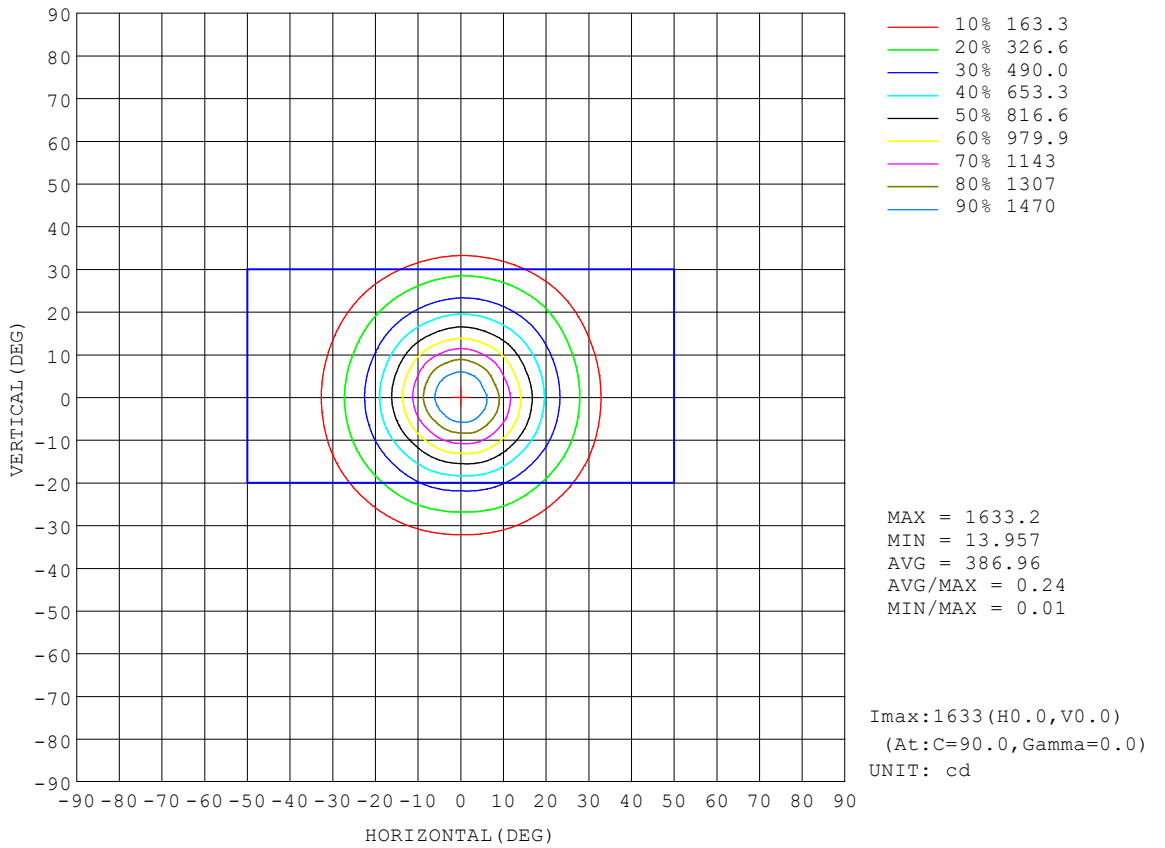
REFLECTANCE										
Ceiling	0.8	0.8	0.8	0.7	0.7	0.7	0.5	0.5	0.5	0
Walls	0.7	0.5	0.3	0.7	0.5	0.3	0.7	0.5	0.3	0
Working plane	0.2	0.2	0.2	0.2	0.2	0.2	0.2	0.2	0.2	0
ROOM INDEX	UTILIZATION FACTORS (PERCENT) $k(RI) \times RCR = 5$									
$k = 0.60$	87	80	76	86	80	76	85	79	76	72
0.80	94	88	84	93	87	84	92	87	83	79
1.00	98	92	88	97	92	88	95	91	87	83
1.25	102	96	93	101	96	92	99	94	91	87
1.50	105	100	96	103	99	95	101	97	94	89
2.00	107	103	99	106	102	99	103	100	97	91
2.50	109	105	102	107	104	101	104	101	99	93
3.00	111	107	104	109	106	103	105	103	101	94
4.00	113	110	108	111	108	106	107	105	103	96
5.00	114	112	110	112	110	108	108	106	105	97
ROOM INDEX	UF(total)									Direct
According to DIN EN 13032-2 2004			Suspended				SHRNOM = 1.25			

C Range: 0 - 360DEG
 C Interval: 22.5DEG
 Test Speed: HIGH
 Temperature:25.3°C
 Operators:DAMIN
 Test Date:2023-11-10

γ Range: 0 - 180DEG
 γ Interval: 5.0DEG
 Test System:EVERFINE GO-2000B_V1 SYSTEM V2.00.473
 Humidity:65.0%
 Test Distance:9.401m [K=1.0000]
 Remarks:

ISOCANDELA DIAGRAM

Test:U:220.32V I:0.0600A P:7.2393W PF:0.5473 Freq:50.00Hz Lamp Flux:698.638x1 lm		
NAME: 射灯	TYPE:	WEIGHT:
SPEC.:	DIM.:	SERIAL No.:
MFR.: EVERFINE	SUR.: 44.5mm	Shielding Angle:

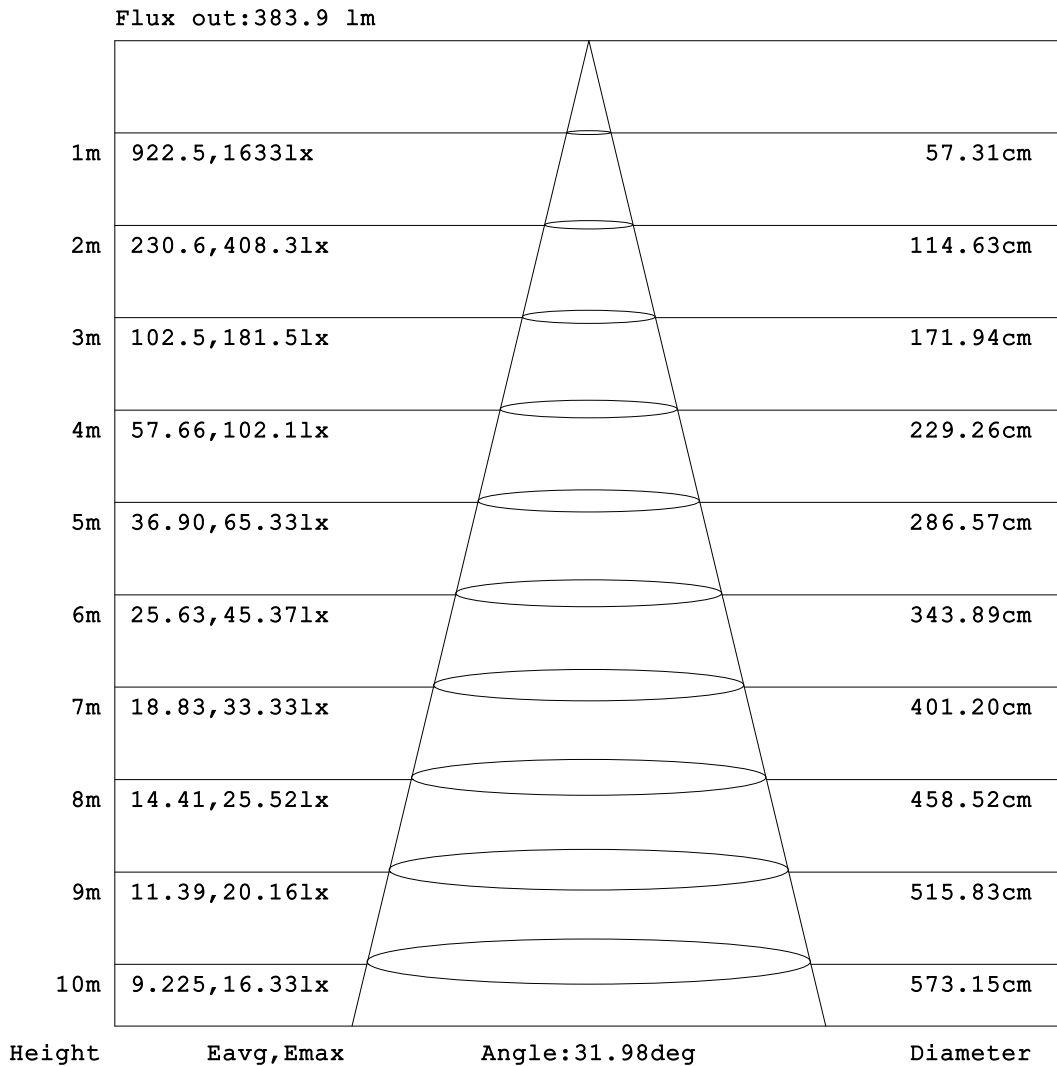


C Range: 0 - 360DEG
 C Interval: 22.5DEG
 Test Speed: HIGH
 Temperature:25.3°C
 Operators:DAMIN
 Test Date:2023-11-10

γ Range: 0 - 180DEG
 γ Interval: 5.0DEG
 Test System:EVERFINE GO-2000B_V1 SYSTEM V2.00.473
 Humidity:65.0%
 Test Distance:9.401m [K=1.0000]
 Remarks:

AAI Figure

Test:U:220.32V I:0.0600A P:7.2393W PF:0.5473 Freq:50.00Hz Lamp Flux:698.638x1 lm		
NAME: 射灯	TYPE:	WEIGHT:
SPEC.:	DIM.:	SERIAL No.:
MFR.: EVERFINE	SUR.: 44.5mm	Shielding Angle:



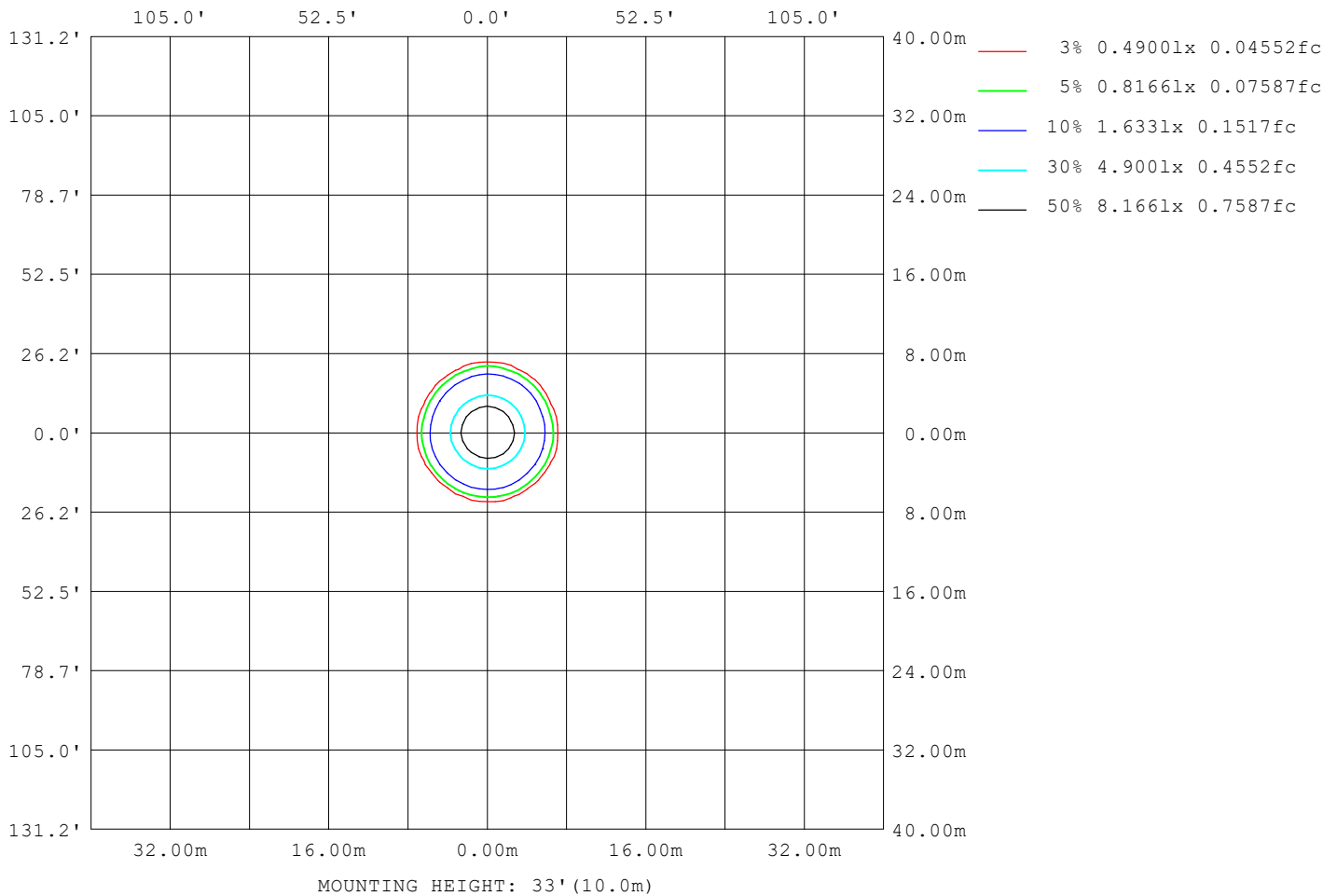
Note: The Curves indicate the illuminated area and the average illumination when the luminaire is at different distance.

C Range: 0 - 360DEG
 C Interval: 22.5DEG
 Test Speed: HIGH
 Temperature: 25.3°C
 Operators: DAMIN
 Test Date: 2023-11-10

γ Range: 0 - 180DEG
 γ Interval: 5.0DEG
 Test System: EVERFINE GO-2000B_V1 SYSTEM V2.00.473
 Humidity: 65.0%
 Test Distance: 9.401m [K=1.0000]
 Remarks:

ISOLUX DIAGRAM

Test:U:220.32V I:0.0600A P:7.2393W PF:0.5473 Freq:50.00Hz Lamp Flux:698.638x1 lm		
NAME: 射灯	TYPE:	WEIGHT:
SPEC.:	DIM.:	SERIAL No.:
MFR.: EVERFINE	SUR.: 44.5mm	Shielding Angle:



C Range: 0 - 360DEG
 C Interval: 22.5DEG
 Test Speed: HIGH
 Temperature:25.3°C
 Operators:DAMIN
 Test Date:2023-11-10

γ Range: 0 - 180DEG
 γ Interval: 5.0DEG
 Test System:EVERFINE GO-2000B_V1 SYSTEM V2.00.473
 Humidity:65.0%
 Test Distance:9.401m [K=1.0000]
 Remarks:

LED Avg.L Report

Test:U:220.32V I:0.0600A P:7.2393W PF:0.5473 Freq:50.00Hz Lamp Flux:698.638x1 lm		
NAME: 射灯	TYPE:	WEIGHT:
SPEC.:	DIM.:	SERIAL No.:
MFR.: EVERFINE	SUR.: 44.5mm	Shielding Angle:

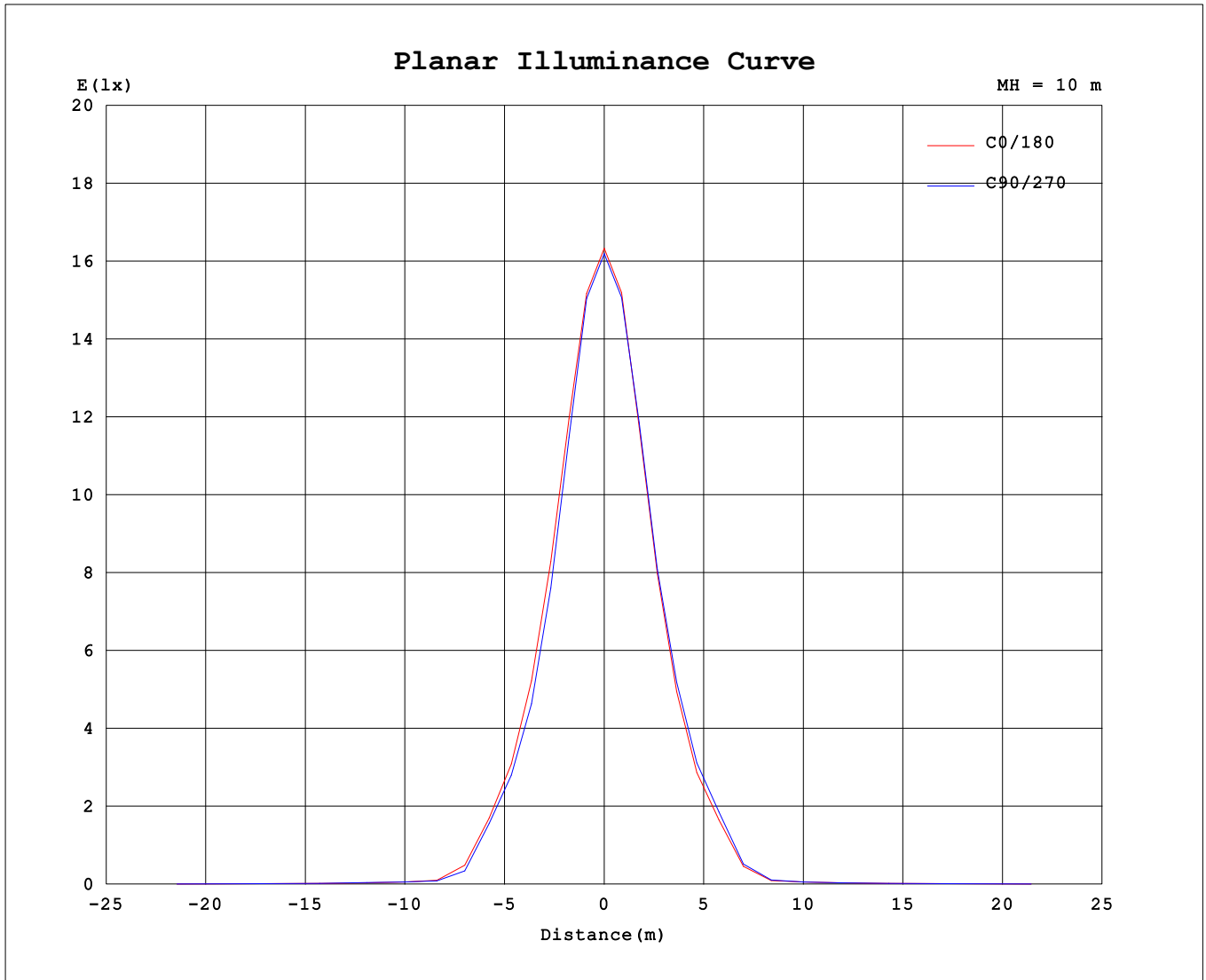
AvgL	cd/m2
L_0~180 (65) av	385
L_0~180 (75) av	448
L_0~180 (85) av	732
L_90~270 (65) av	382
L_90~270 (75) av	440
L_90~270 (85) av	726
L_45 (65) av	383
L_45 (75) av	444
L_45 (85) av	723

Standard: GB/T 29293-2012

C Range: 0 - 360DEG
 C Interval: 22.5DEG
 Test Speed: HIGH
 Temperature:25.3℃
 Operators:DAMIN
 Test Date:2023-11-10

γ Range: 0 - 180DEG
 γ Interval: 5.0DEG
 Test System:EVERFINE GO-2000B_V1 SYSTEM V2.00.473
 Humidity:65.0%
 Test Distance:9.401m [K=1.0000]
 Remarks:

Planar Illuminance Curve



C Range: 0 - 360DEG
 C Interval: 22.5DEG
 Test Speed: HIGH
 Temperature: 25.3°C
 Operators: DAMIN
 Test Date: 2023-11-10

γ Range: 0 - 180DEG
 γ Interval: 5.0DEG
 Test System: EVERFINE GO-2000B_V1 SYSTEM V2.00.473
 Humidity: 65.0%
 Test Distance: 9.401m [K=1.0000]
 Remarks:

LUMINOUS DISTRIBUTION INTENSITY DATA

Test:U:220.32V I:0.0600A P:7.2393W PF:0.5473 Freq:50.00Hz Lamp Flux:698.638x1 lm		
NAME: 射灯	TYPE:	WEIGHT:
SPEC.:	DIM.:	SERIAL No.:
MFR.: EVERFINE	SUR.: 44.5mm	Shielding Angle:

Table--1

UNIT: cd

C (DEG) \ γ (DEG)	0	22.5	45	67.5	90	112.5	135	157.5	180	202.5	225	247.5	270	292.5	315	337.5			
0	1621	1621	1621	1621	1621	1621	1621	1621	1621	1621	1621	1621	1621	1621	1621	1621			
5	1523	1533	1532	1539	1523	1522	1512	1530	1525	1521	1524	1523	1526	1524	1525	1512			
10	1242	1250	1236	1236	1202	1204	1198	1225	1220	1224	1241	1234	1243	1234	1239	1227			
15	913	914	894	881	845	848	843	872	879	878	894	886	898	896	907	899			
20	625	617	594	586	559	571	573	592	592	591	606	611	626	629	637	631			
25	411	405	391	390	377	382	377	384	383	379	390	403	420	426	428	416			
30	261	259	245	251	241	245	244	255	252	246	257	267	286	287	287	265			
35	88.8	89.8	77.9	75.6	63.1	66.7	68.2	82.3	84.2	82.6	85.6	85.5	95.2	94.3	96.4	85.8			
40	23.0	22.9	22.7	22.0	20.9	21.0	21.0	21.9	21.8	21.6	22.1	22.6	24.6	25.5	25.3	23.7			
45	17.1	17.3	17.8	17.6	17.5	17.6	17.4	17.5	17.3	17.2	17.3	17.4	17.7	18.2	18.0	17.3			
50	15.9	16.1	16.4	16.5	16.5	16.3	16.3	16.4	16.3	16.2	16.1	15.9	15.9	16.5	16.1	15.8			
55	14.5	14.6	14.7	14.7	14.6	14.5	14.6	14.8	14.7	14.5	14.5	14.5	14.4	14.7	14.5	14.4			
60	13.0	13.1	13.2	13.1	13.1	13.3	13.2	13.2	13.2	13.1	13.0	13.0	12.9	13.0	12.8	12.7			
65	11.3	11.3	11.4	11.4	11.3	11.5	11.4	11.5	11.5	11.4	11.4	11.4	11.3	11.3	11.1	11.1			
70	9.22	9.10	9.32	9.39	9.45	9.50	9.58	9.55	9.50	9.42	9.33	9.16	8.99	8.87	8.82	9.00			
75	7.88	7.94	8.10	8.17	8.25	8.31	8.42	8.42	8.35	8.22	8.05	7.91	7.71	7.62	7.57	7.77			
80	6.73	6.89	7.13	7.25	7.35	7.42	7.46	7.43	7.32	7.15	6.97	6.84	6.62	6.50	6.47	6.61			
85	4.35	4.57	4.54	4.73	4.43	4.62	4.47	4.80	4.57	3.99	4.28	4.17	4.43	4.27	4.35	4.16			
90	0.05	0.02	0.05	0.04	0.04	0.03	0.04	0.03	0.05	0.04	0.04	0.05	0.04	0.06	0.04	0.05			
95	0.04	0.04	0.03	0.04	0.04	0.04	0.03	0.04	0.05	0.04	0.05	0.04	0.05	0.04	0.05	0.04			
100	0.04	0.05	0.03	0.05	0.04	0.04	0.03	0.05	0.06	0.04	0.07	0.04	0.06	0.04	0.06	0.04			
105	0.04	0.07	0.03	0.07	0.04	0.07	0.03	0.07	0.09	0.04	0.08	0.04	0.08	0.04	0.09	0.04			
110	0.06	0.12	0.06	0.12	0.06	0.12	0.06	0.12	0.17	0.10	0.17	0.10	0.16	0.10	0.16	0.10			
115	0.18	0.24	0.19	0.24	0.20	0.26	0.19	0.24	0.34	0.26	0.31	0.24	0.31	0.23	0.30	0.26			
120	0.36	0.42	0.37	0.43	0.39	0.45	0.39	0.43	0.57	0.50	0.55	0.47	0.53	0.46	0.53	0.48			
125	0.64	0.70	0.66	0.74	0.69	0.74	0.68	0.72	0.93	0.86	0.89	0.82	0.86	0.80	0.87	0.82			
130	1.04	1.11	1.06	1.15	1.11	1.16	1.10	1.13	1.41	1.34	1.37	1.29	1.32	1.26	1.33	1.30			
135	1.57	1.64	1.61	1.67	1.65	1.70	1.64	1.65	2.00	1.94	1.97	1.89	1.91	1.85	1.92	1.91			
140	2.17	2.25	2.21	2.28	2.25	2.30	2.23	2.25	2.64	2.57	2.60	2.52	2.54	2.49	2.56	2.54			
145	2.77	2.85	2.80	2.89	2.86	2.91	2.83	2.85	3.23	3.16	3.19	3.11	3.15	3.10	3.16	3.14			
150	3.29	3.36	3.32	3.41	3.36	3.40	3.31	3.35	3.69	3.59	3.64	3.56	3.61	3.57	3.63	3.60			
155	3.62	3.70	3.64	3.74	3.69	3.71	3.61	3.65	3.90	3.83	3.85	3.82	3.91	3.84	3.91	3.86			
160	3.75	3.77	3.76	3.78	3.78	3.72	3.69	3.69	3.87	3.85	3.83	3.86	3.91	3.91	3.89	3.90			
165	3.72	3.65	3.71	3.71	3.74	3.64	3.65	3.58	3.69	3.68	3.62	3.74	3.76	3.84	3.72	3.77			
170	3.52	3.48	3.54	3.52	3.55	3.44	3.47	3.42	3.44	3.46	3.38	3.46	3.48	3.58	3.49	3.55			
175	3.37	3.33	3.44	3.36	3.36	3.29	3.37	3.31	3.30	3.31	3.29	3.27	3.26	3.38	3.36	3.39			
180	3.33	3.32	3.34	3.28	3.29	3.29	3.35	3.32	3.30	3.28	3.29	3.26	3.26	3.31	3.32	3.33			

C Range: 0 - 360DEG
 C Interval: 22.5DEG
 Test Speed: HIGH
 Temperature:25.3℃
 Operators:DAMIN
 Test Date:2023-11-10

γ Range: 0 - 180DEG
 γ Interval: 5.0DEG
 Test System:EVERFINE GO-2000B_V1 SYSTEM V2.00.473
 Humidity:65.0%
 Test Distance:9.401m [K=1.0000]
 Remarks: