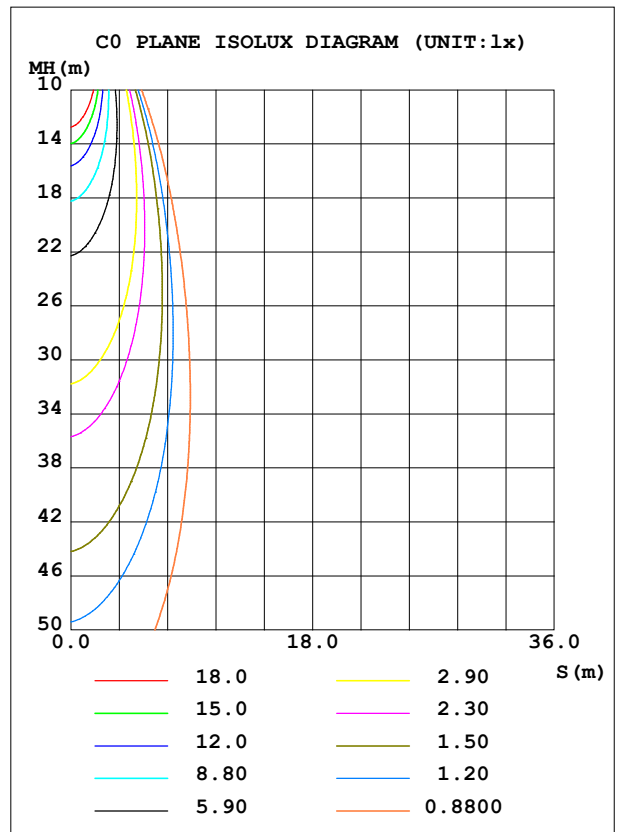
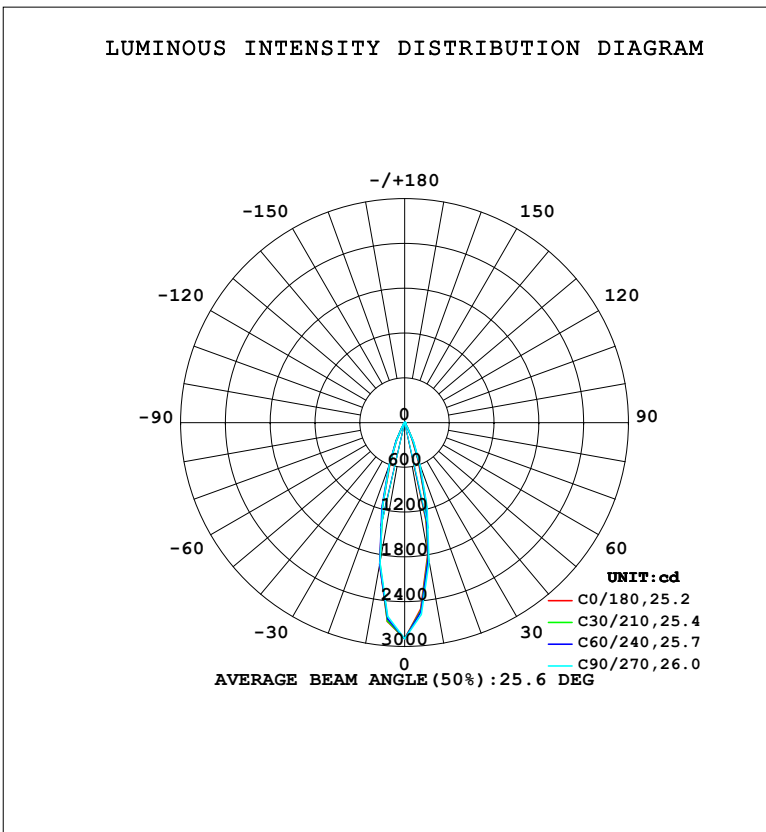


**LUMINAIRE PHOTOMETRIC TEST REPORT**

Test:U:220.38V I:0.0977A P:11.857W PF:0.5505 Freq:50.00Hz Lamp Flux:714.853x1 lm		
NAME:	TYPE:	WEIGHT:
SPEC.:	DIM.:	SERIAL No.:
MFR.: EVERFINE	SUR.:	Shielding Angle:

DATA OF LAMP		PHOTOMETRIC DATA				Eff: 60.29 lm/W
MODEL	342BR	I <sub>max</sub> (cd)	2895	S/MH (C0/180)	0.44	
NOMINAL POWER (W)	12	LOR (%)	100.0	S/MH (C90/270)	0.44	
RATED VOLTAGE (V)	220	TOTAL FLUX (lm)	714.85	η UP, DN (C0-180)	0.0, 50.6	
NOMINAL FLUX (lm)	714.853	CIE CLASS	DIRECT	η UP, DN (C180-360)	0.0, 49.4	
LAMPS INSIDE	1	η up (%)	0.0	CIBSE SHR NOM	0.00	
TEST VOLTAGE (V)	219.5	η down (%)	100.0	CIBSE SHR MAX	0.30	



C Range: 0 - 360DEG  
 C Interval: 15.0DEG  
 Test Speed: HIGH  
 Temperature: 25.3°C  
 Operators: DAMIN  
 Test Date: 2024-01-22

γ Range: 0 - 90DEG  
 γ Interval: 5.0DEG  
 Test System: EVERFINE GO-2000B\_V1 SYSTEM V2.00.473  
 Humidity: 65.0%  
 Test Distance: 9.401m [K=1.0000]  
 Remarks:

ZONAL FLUX DIAGRAM

ZONAL FLUX DIAGRAM:

$\gamma$	C0	C45	C90	C135	C180	C225	C270	C315	$\gamma$	$\Phi$ zone	$\Phi$ total	%lum,lamp
10	1795	1839	1899	1951	1927	1908	1908	1826	0- 10	225.6	225.6	31.6,31.6
20	535.2	575.3	625.2	644.3	588.6	595.8	603.3	562.3	10- 20	321.7	547.3	76.6,76.6
30	69.21	76.04	80.03	95.25	84.34	82.07	73.55	69.58	20- 30	133.7	681.1	95.3,95.3
40	13.24	14.29	14.36	19.34	20.12	21.43	15.20	14.29	30- 40	24.35	705.4	98.7,98.7
50	3.560	4.178	3.979	5.150	5.638	6.730	3.777	3.313	40- 50	7.434	712.9	99.7,99.7
60	0.3230	0.4655	0.5630	0.5569	0.5389	0.4814	0.1321	0.2132	50- 60	1.900	714.8	100,100
70	0	0	0	0	0	0	0	0	60- 70	0.0989	714.9	100,100
80	0	0	0	0	0	0	0	0	70- 80	0	714.9	100,100
90	0	0	0	0	0	0	0	0	80- 90	0	714.9	100,100
100									90-100			
110									100-110			
120									110-120			
130									120-130			
140									130-140			
150									140-150			
160									150-160			
170									160-170			
180									170-180			
DEG	LUMINOUS INTENSITY:cd									UNIT:lm		

Conical surface Flux(90deg): 710.13 lm

%lum = 99.3%

%lamp = 99.3%

Conical surface Flux(130deg): 714.85 lm

%lum = 100.0%

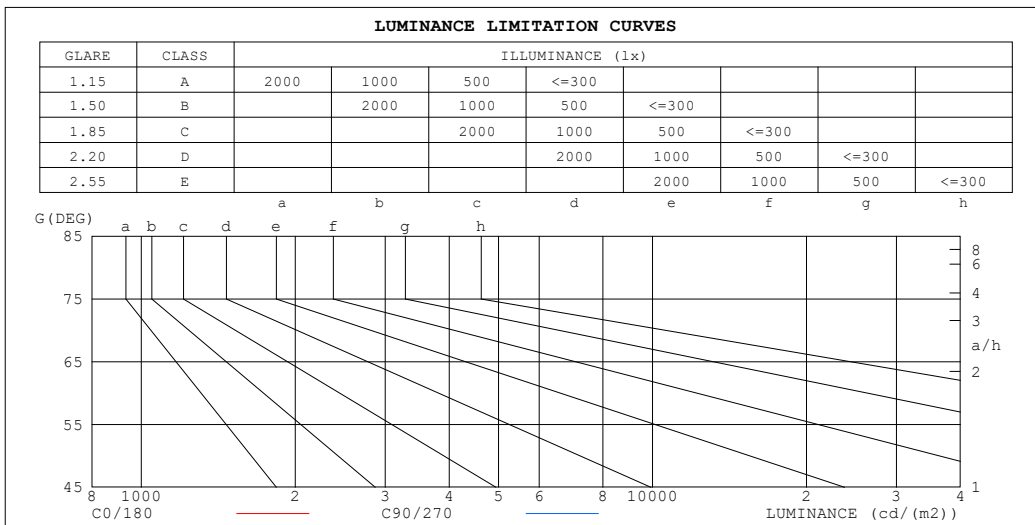
%lamp = 100.0%

C Range: 0 - 360DEG  
 C Interval: 15.0DEG  
 Test Speed: HIGH  
 Temperature:25.3°C  
 Operators:DAMIN  
 Test Date:2024-01-22

$\gamma$  Range: 0 - 90DEG  
 $\gamma$  Interval: 5.0DEG  
 Test System:EVERFINE GO-2000B\_V1 SYSTEM V2.00.473  
 Humidity:65.0%  
 Test Distance:9.401m [K=1.0000]  
 Remarks:

**LUMINANCE LIMITATION CURVES**

Test:U:220.38V I:0.0977A P:11.857W PF:0.5505 Freq:50.00Hz Lamp Flux:714.853x1 lm		
NAME:	TYPE:	WEIGHT:
SPEC.:	DIM.:	SERIAL No.:
MFR.: EVERFINE	SUR.:	Shielding Angle:



LUMINANCE cd/ (m2)		
G (DEG)	C0/180	C90/270
85	0	0
80	0	0
75	0	0
70	0	0
65	0	0
60	7	11
55	26	30
50	56	62
45	101	108

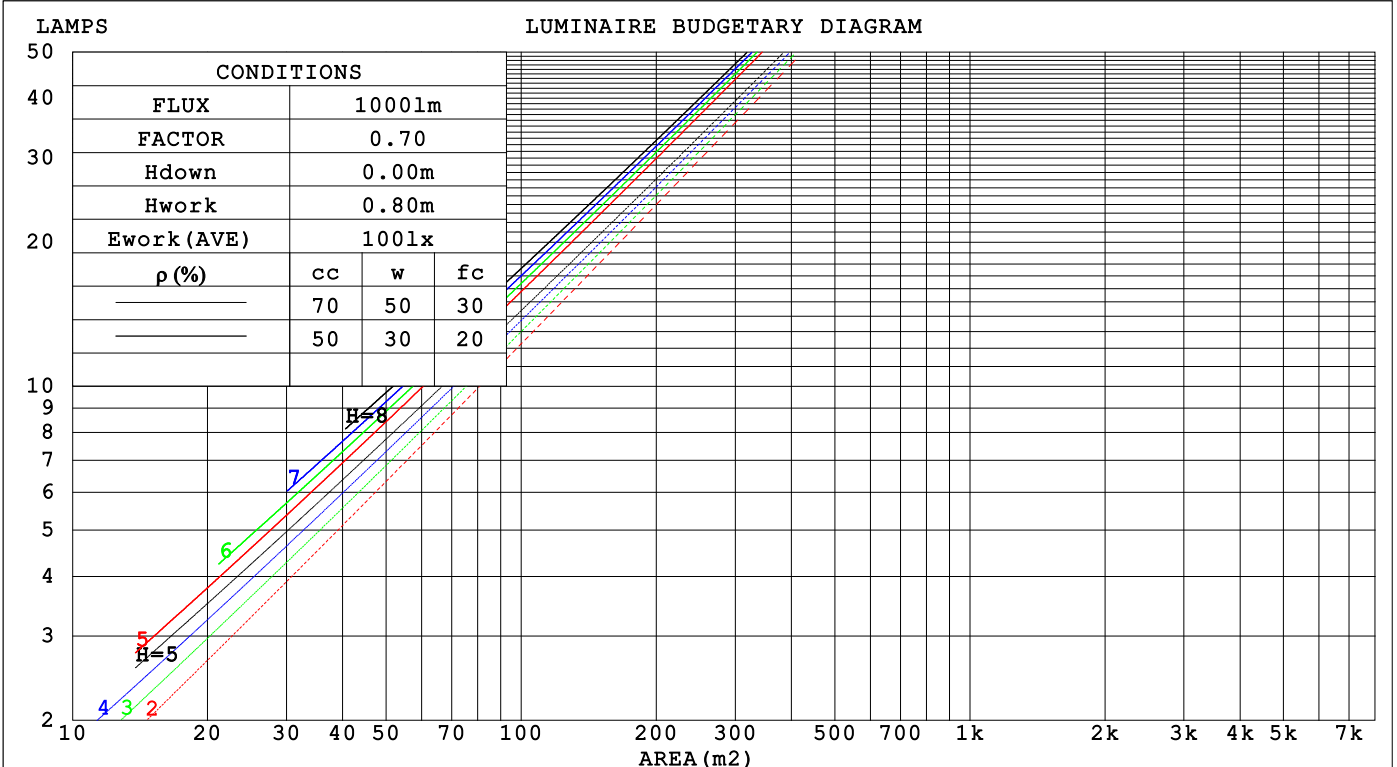
C Range: 0 - 360DEG  
 C Interval: 15.0DEG  
 Test Speed: HIGH  
 Temperature:25.3°C  
 Operators:DAMIN  
 Test Date:2024-01-22

γ Range: 0 - 90DEG  
 γ Interval: 5.0DEG  
 Test System:EVERFINE GO-2000B\_V1 SYSTEM V2.00.473  
 Humidity:65.0%  
 Test Distance:9.401m [K=1.0000]  
 Remarks:

**CU AND LUMINAIRE BUDGETARY ESTIMATE DIAGRAM**

Test:U:220.38V I:0.0977A P:11.857W PF:0.5505 Freq:50.00Hz Lamp Flux:714.853x1 lm		
NAME:	TYPE:	WEIGHT:
SPEC.:	DIM.:	SERIAL No.:
MFR.: EVERFINE	SUR.:	Shielding Angle:

$\rho_{cc}$	80%			70%			50%			30%			10%			0
$\rho_w$	50%	30%	10%	50%	30%	10%	50%	30%	10%	50%	30%	10%	50%	30%	10%	0
$\rho_{fc}$	20%			20%			20%			20%			20%			0
RCR	RCR:Room Cavity Ratio      Coefficients of Utilization(CU)															
0.0	1.19	1.19	1.19	1.16	1.16	1.16	1.11	1.11	1.11	1.06	1.06	1.06	1.02	1.02	1.02	1.00
1.0	1.13	1.11	1.09	1.11	1.09	1.07	1.07	1.05	1.04	1.03	1.02	1.01	.00	.99	.98	.96
2.0	1.07	1.04	1.02	1.06	1.03	1.01	1.03	1.00	.98	.00	.98	.96	.97	.96	.94	.93
3.0	1.03	.99	.96	1.01	.98	.95	.99	.96	.94	.97	.94	.92	.94	.93	.91	.90
4.0	.98	.94	.91	.97	.94	.91	.95	.92	.90	.94	.91	.89	.92	.90	.88	.87
5.0	.95	.90	.87	.94	.90	.87	.92	.89	.86	.91	.88	.85	.89	.87	.85	.84
6.0	.91	.87	.84	.90	.86	.84	.89	.86	.83	.88	.85	.82	.87	.84	.82	.81
7.0	.88	.84	.81	.87	.83	.81	.86	.83	.80	.85	.82	.80	.84	.82	.79	.78
8.0	.85	.81	.78	.85	.81	.78	.84	.80	.78	.83	.80	.77	.82	.79	.77	.76
9.0	.82	.78	.75	.82	.78	.75	.81	.78	.75	.81	.77	.75	.80	.77	.75	.74
10.0	.80	.76	.73	.80	.76	.73	.79	.75	.73	.78	.75	.73	.78	.75	.73	.72



C Range: 0 - 360DEG  
 C Interval: 15.0DEG  
 Test Speed: HIGH  
 Temperature:25.3°C  
 Operators:DAMIN  
 Test Date:2024-01-22

$\gamma$  Range: 0 - 90DEG  
 $\gamma$  Interval: 5.0DEG  
 Test System:EVERFINE GO-2000B\_V1 SYSTEM V2.00.473  
 Humidity:65.0%  
 Test Distance:9.401m [K=1.0000]  
 Remarks:

WEC AND CCEC

Test:U:220.38V I:0.0977A P:11.857W PF:0.5505 Freq:50.00Hz								
Lamp Flux:714.853x1 lm								
NAME:			TYPE:			WEIGHT:		
SPEC.:			DIM.:			SERIAL No.:		
MFR.: EVERFINE			SUR.:			Shielding Angle:		

$\rho_{CC}$	80%			70%			50%			30%			10%			0
$\rho_w$	50%	30%	10%	50%	30%	10%	50%	30%	10%	50%	30%	10%	50%	30%	10%	0
$\rho_{fc}$	20%			20%			20%			20%			20%			0
RCR	RCR:Room Cavity Ratio						Wall Exitance Coefficients (WEC)									
0.0																
1.0	.139	.079	.025	.133	.076	.024	.120	.069	.022	.109	.063	.020	.098	.057	.018	
2.0	.130	.071	.022	.124	.068	.021	.114	.063	.020	.104	.059	.018	.096	.054	.017	
3.0	.121	.064	.019	.117	.062	.019	.108	.059	.018	.100	.055	.017	.093	.051	.016	
4.0	.114	.059	.017	.110	.058	.017	.103	.054	.016	.096	.052	.016	.090	.049	.015	
5.0	.107	.055	.016	.104	.053	.016	.098	.051	.015	.092	.049	.014	.087	.046	.014	
6.0	.102	.051	.015	.099	.050	.014	.094	.048	.014	.089	.046	.014	.084	.044	.013	
7.0	.097	.048	.014	.095	.047	.013	.090	.045	.013	.086	.044	.013	.081	.042	.012	
8.0	.093	.045	.013	.090	.045	.013	.086	.043	.012	.083	.042	.012	.079	.041	.012	
9.0	.089	.043	.012	.087	.042	.012	.083	.041	.012	.080	.040	.011	.077	.039	.011	
10.0	.085	.041	.011	.083	.040	.011	.080	.039	.011	.077	.038	.011	.074	.037	.011	

$\rho_{CC}$	80%			70%			50%			30%			10%			0
$\rho_w$	50%	30%	10%	50%	30%	10%	50%	30%	10%	50%	30%	10%	50%	30%	10%	0
$\rho_{fc}$	20%			20%			20%			20%			20%			0
RCR	RCR:Room Cavity Ratio						Ceiling Cavity Exitance Coefficients (CCEC)									
0.0	.190	.190	.190	.163	.163	.163	.111	.111	.111	.064	.064	.064	.020	.020	.020	
1.0	.169	.158	.148	.144	.135	.127	.099	.093	.088	.057	.054	.051	.018	.017	.017	
2.0	.151	.133	.118	.129	.114	.102	.088	.079	.071	.051	.046	.042	.016	.015	.014	
3.0	.136	.113	.095	.116	.098	.083	.080	.068	.058	.046	.040	.034	.015	.013	.011	
4.0	.123	.098	.078	.106	.085	.068	.073	.059	.048	.042	.035	.028	.014	.011	.009	
5.0	.113	.086	.065	.097	.074	.057	.067	.052	.040	.039	.030	.024	.012	.010	.008	
6.0	.104	.076	.055	.090	.066	.048	.062	.046	.034	.036	.027	.020	.012	.009	.007	
7.0	.097	.068	.047	.083	.059	.041	.058	.041	.029	.033	.024	.017	.011	.008	.006	
8.0	.091	.061	.041	.078	.053	.035	.054	.037	.025	.031	.022	.015	.010	.007	.005	
9.0	.085	.055	.035	.073	.048	.031	.051	.034	.022	.030	.020	.013	.010	.007	.004	
10.0	.080	.051	.031	.069	.044	.027	.048	.031	.019	.028	.018	.011	.009	.006	.004	

C Range: 0 - 360DEG  
 C Interval: 15.0DEG  
 Test Speed: HIGH  
 Temperature:25.3°C  
 Operators:DAMIN  
 Test Date:2024-01-22

$\gamma$  Range: 0 - 90DEG  
 $\gamma$  Interval: 5.0DEG  
 Test System:EVERFINE GO-2000B\_V1 SYSTEM V2.00.473  
 Humidity:65.0%  
 Test Distance:9.401m [K=1.0000]  
 Remarks:

**UGR(Unified Glare Rating) Table**

Test:U:220.38V I:0.0977A P:11.857W PF:0.5505 Freq:50.00Hz										
Lamp Flux:714.853x1 lm										
NAME:			TYPE:				WEIGHT:			
SPEC.:			DIM.:				SERIAL No.:			
MFR.: EVERFINE			SUR.:				Shielding Angle:			
ceiling/cavity	0.7	0.7	0.5	0.5	0.3	0.7	0.7	0.5	0.5	0.3
walls	0.5	0.3	0.5	0.3	0.3	0.5	0.3	0.5	0.3	0.3
working plane	0.2	0.2	0.2	0.2	0.2	0.2	0.2	0.2	0.2	0.2
Room dimensions	Viewed crosswise					Viewed endwise				
x = 2H y = 2H	-6.8	-6.1	-6.6	-6.0	-5.8	-6.3	-5.7	-6.1	-5.5	-5.4
3H	-6.9	-6.3	-6.7	-6.1	-5.9	-6.5	-5.9	-6.2	-5.7	-5.5
4H	-7.0	-6.4	-6.8	-6.2	-6.0	-6.6	-6.0	-6.3	-5.8	-5.5
6H	-7.1	-6.5	-6.8	-6.3	-6.1	-6.6	-6.1	-6.4	-5.9	-5.6
8H	-7.1	-6.6	-6.8	-6.4	-6.1	-6.7	-6.1	-6.4	-5.9	-5.7
12H	-7.2	-6.7	-6.9	-6.4	-6.1	-6.7	-6.2	-6.4	-6.0	-5.7
4H 2H	-7.0	-6.4	-6.7	-6.2	-6.0	-6.5	-6.0	-6.3	-5.7	-5.5
3H	-7.2	-6.6	-6.9	-6.4	-6.1	-6.7	-6.2	-6.4	-5.9	-5.7
4H	-7.3	-6.8	-6.9	-6.5	-6.2	-6.8	-6.3	-6.5	-6.0	-5.7
6H	-7.4	-6.9	-7.0	-6.6	-6.3	-6.9	-6.5	-6.5	-6.2	-5.8
8H	-7.4	-7.0	-7.0	-6.7	-6.3	-7.0	-6.6	-6.6	-6.2	-5.9
12H	-7.5	-7.1	-7.1	-6.7	-6.4	-7.0	-6.7	-6.6	-6.3	-5.9
8H 4H	-7.4	-7.0	-7.0	-6.7	-6.3	-7.0	-6.6	-6.6	-6.2	-5.9
6H	-7.5	-7.2	-7.1	-6.8	-6.4	-7.1	-6.8	-6.7	-6.4	-6.0
8H	-7.6	-7.3	-7.2	-6.9	-6.5	-7.1	-6.9	-6.7	-6.4	-6.0
12H	-7.7	-7.4	-7.2	-7.0	-6.5	-7.2	-7.0	-6.7	-6.5	-6.1
12H 4H	-7.5	-7.1	-7.1	-6.7	-6.4	-7.0	-6.7	-6.6	-6.3	-5.9
6H	-7.6	-7.3	-7.2	-6.9	-6.5	-7.1	-6.9	-6.7	-6.4	-6.0
8H	-7.7	-7.4	-7.2	-7.0	-6.5	-7.2	-7.0	-6.7	-6.5	-6.1
Variations with the observer position at spacings(CIE Pub.117):										
S = 1.0H	+ 2.7 / -15.5					+ 2.7 / -12.1				
1.5H	+ 4.3 / -10.5					+ 4.3 / - 9.7				
2.0H	+ 7.1 / - 1.5					+ 7.0 / -67.3				

CIE Pub.117, 714.9 lm Total Lamp Luminous Flux Correct (8log(F/F0) = -1.2)  
 Area: 0.1 m2

C Range: 0 - 360DEG  
 C Interval: 15.0DEG  
 Test Speed: HIGH  
 Temperature:25.3°C  
 Operators:DAMIN  
 Test Date:2024-01-22

γ Range: 0 - 90DEG  
 γ Interval: 5.0DEG  
 Test System:EVERFINE GO-2000B\_V1 SYSTEM V2.00.473  
 Humidity:65.0%  
 Test Distance:9.401m [K=1.0000]  
 Remarks:

**UTILIZATION FACTORS TABLE**

Test:U:220.38V I:0.0977A P:11.857W PF:0.5505 Freq:50.00Hz Lamp Flux:714.853x1 lm		
NAME:	TYPE:	WEIGHT:
SPEC.:	DIM.:	SERIAL No.:
MFR.: EVERFINE	SUR.:	Shielding Angle:

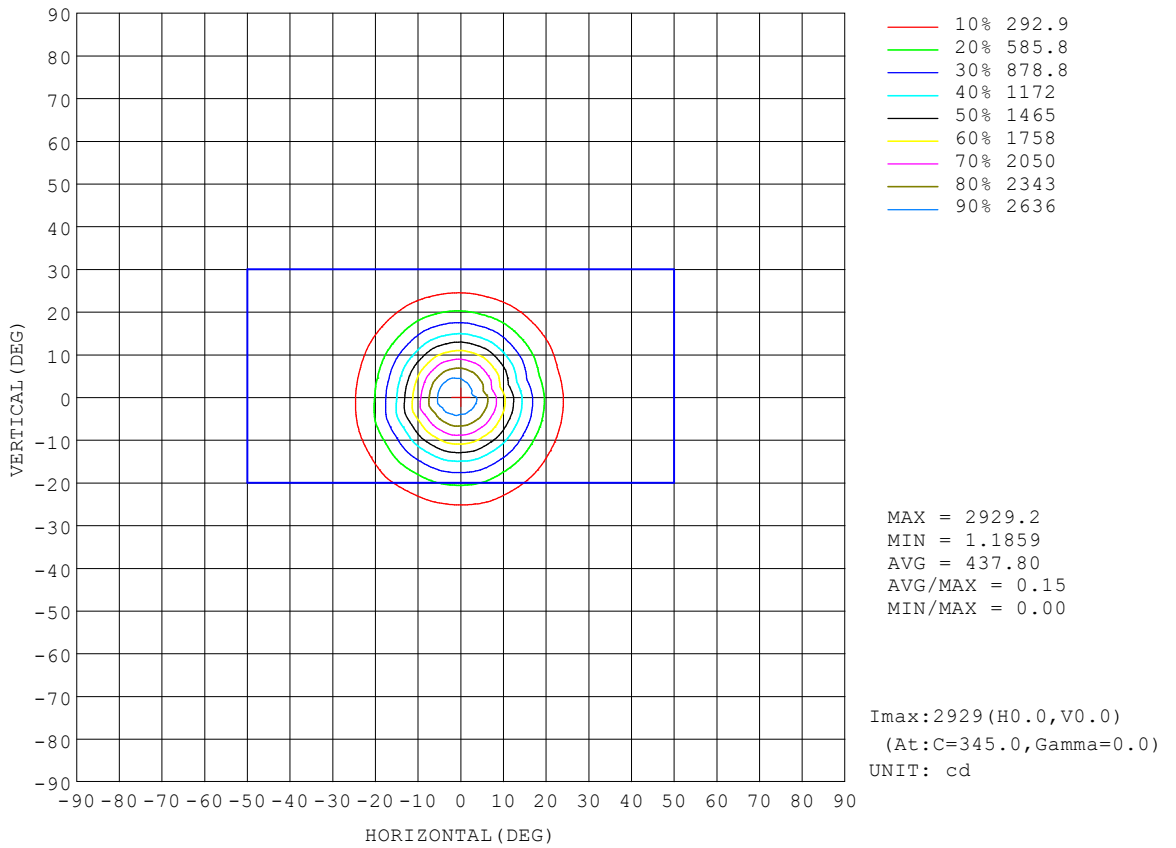
REFLECTANCE										
Ceiling	0.8	0.8	0.8	0.7	0.7	0.7	0.5	0.5	0.5	0
Walls	0.7	0.5	0.3	0.7	0.5	0.3	0.7	0.5	0.3	0
Working plane	0.2	0.2	0.2	0.2	0.2	0.2	0.2	0.2	0.2	0
ROOM INDEX	UTILIZATION FACTORS (PERCENT) $k(RI) \times RCR = 5$									
$k = 0.60$	91	85	82	90	85	81	90	84	81	78
0.80	98	93	89	97	92	89	96	92	89	85
1.00	102	97	93	101	96	93	99	96	92	89
1.25	105	100	97	104	100	97	102	99	96	92
1.50	108	103	100	106	103	100	104	101	99	95
2.00	110	106	103	108	105	102	106	103	101	96
2.50	111	108	105	110	107	104	107	104	102	97
3.00	113	110	107	111	108	106	108	105	104	98
4.00	114	112	110	112	110	109	109	107	106	99
5.00	116	114	112	114	112	110	110	108	107	100
ROOM INDEX	UF(total)									Direct
According to DIN EN 13032-2 2004			Suspended				SHRNOM = 1.25			

C Range: 0 - 360DEG  
 C Interval: 15.0DEG  
 Test Speed: HIGH  
 Temperature:25.3°C  
 Operators:DAMIN  
 Test Date:2024-01-22

$\gamma$  Range: 0 - 90DEG  
 $\gamma$  Interval: 5.0DEG  
 Test System:EVERFINE GO-2000B\_V1 SYSTEM V2.00.473  
 Humidity:65.0%  
 Test Distance:9.401m [K=1.0000]  
 Remarks:

**ISOCANDELA DIAGRAM**

Test:U:220.38V I:0.0977A P:11.857W PF:0.5505 Freq:50.00Hz Lamp Flux:714.853x1 lm		
NAME:	TYPE:	WEIGHT:
SPEC.:	DIM.:	SERIAL No.:
MFR.: EVERFINE	SUR.:	Shielding Angle:



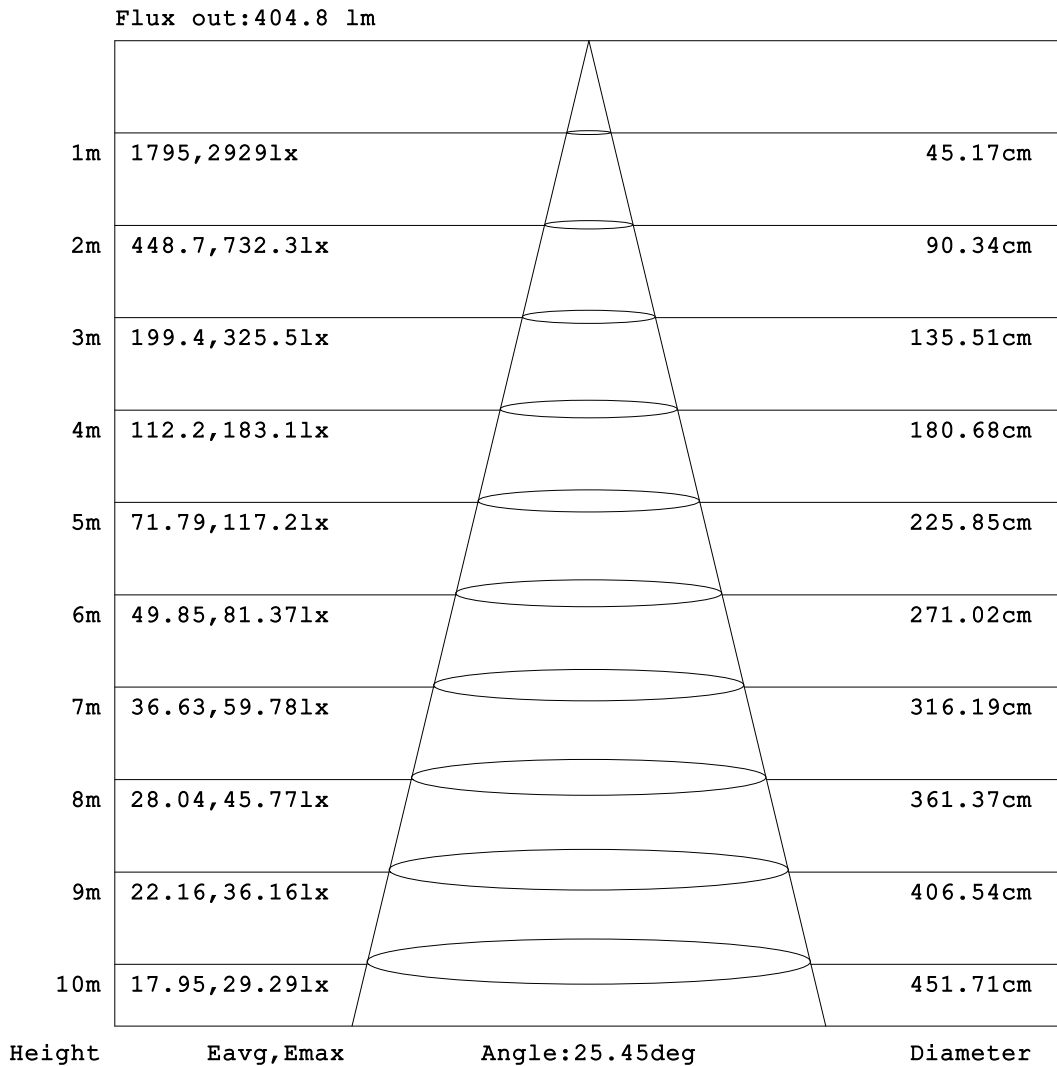
C Range: 0 - 360DEG  
 C Interval: 15.0DEG  
 Test Speed: HIGH  
 Temperature:25.3°C  
 Operators:DAMIN  
 Test Date:2024-01-22

γ Range: 0 - 90DEG  
 γ Interval: 5.0DEG  
 Test System:EVERFINE GO-2000B\_V1 SYSTEM V2.00.473  
 Humidity:65.0%  
 Test Distance:9.401m [K=1.0000]  
 Remarks:



**AAI Figure**

Test:U:220.38V I:0.0977A P:11.857W PF:0.5505 Freq:50.00Hz Lamp Flux:714.853x1 lm		
NAME:	TYPE:	WEIGHT:
SPEC.:	DIM.:	SERIAL No.:
MFR.: EVERFINE	SUR.:	Shielding Angle:



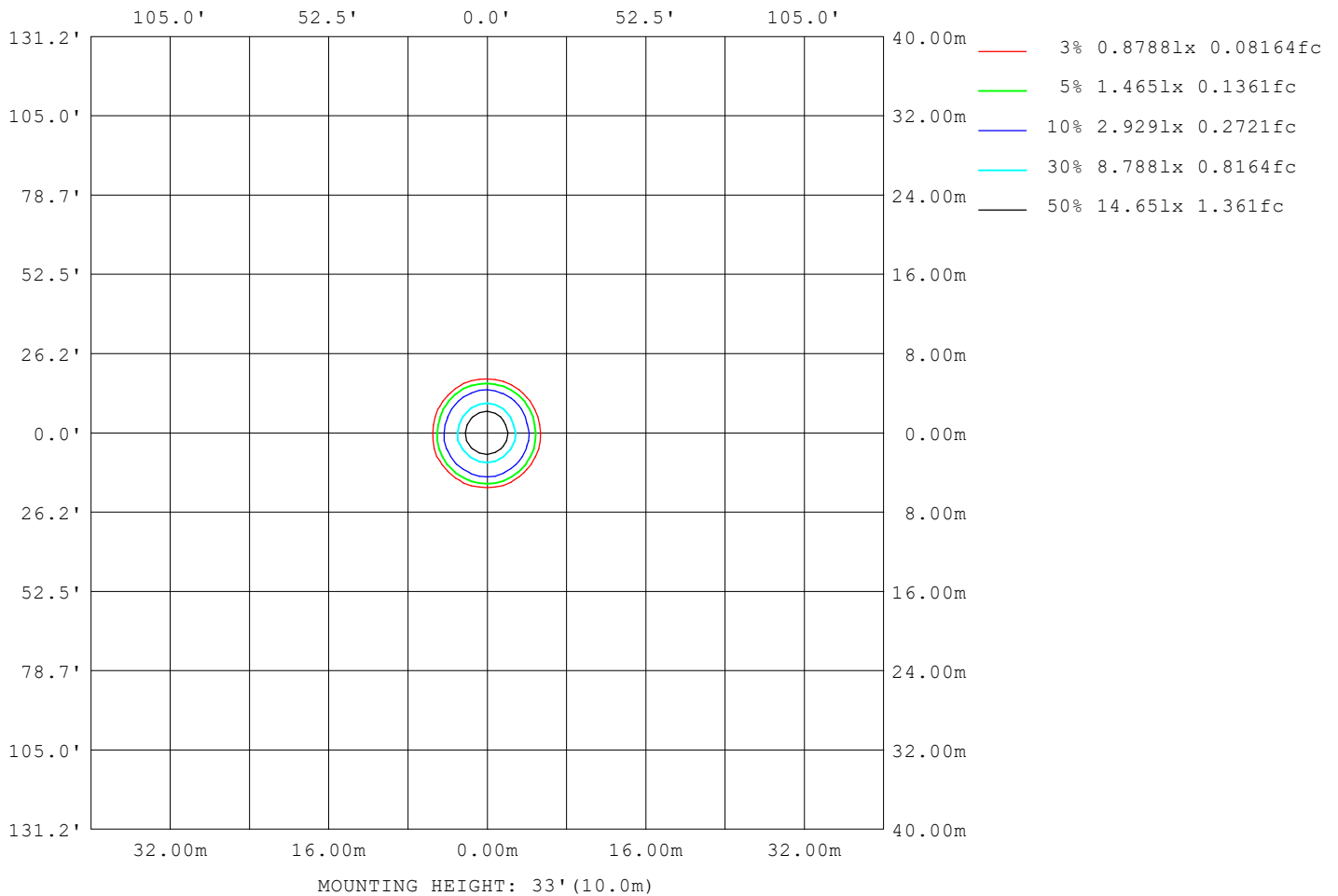
Note:The Curves indicate the illuminated area and the average illumination when the luminaire is at different distance.

C Range: 0 - 360DEG  
 C Interval: 15.0DEG  
 Test Speed: HIGH  
 Temperature:25.3°C  
 Operators:DAMIN  
 Test Date:2024-01-22

γ Range: 0 - 90DEG  
 γ Interval: 5.0DEG  
 Test System:EVERFINE GO-2000B\_V1 SYSTEM V2.00.473  
 Humidity:65.0%  
 Test Distance:9.401m [K=1.0000]  
 Remarks:

**ISOLUX DIAGRAM**

Test:U:220.38V I:0.0977A P:11.857W PF:0.5505 Freq:50.00Hz Lamp Flux:714.853x1 lm		
NAME:	TYPE:	WEIGHT:
SPEC.:	DIM.:	SERIAL No.:
MFR.: EVERFINE	SUR.:	Shielding Angle:



C Range: 0 - 360DEG  
C Interval: 15.0DEG  
Test Speed: HIGH  
Temperature:25.3°C  
Operators:DAMIN  
Test Date:2024-01-22

γ Range: 0 - 90DEG  
γ Interval: 5.0DEG  
Test System:EVERFINE GO-2000B\_V1 SYSTEM V2.00.473  
Humidity:65.0%  
Test Distance:9.401m [K=1.0000]  
Remarks:

**LED Avg.L Report**

Test:U:220.38V I:0.0977A P:11.857W PF:0.5505 Freq:50.00Hz Lamp Flux:714.853x1 lm		
NAME:	TYPE:	WEIGHT:
SPEC.:	DIM.:	SERIAL No.:
MFR.: EVERFINE	SUR.:	Shielding Angle:

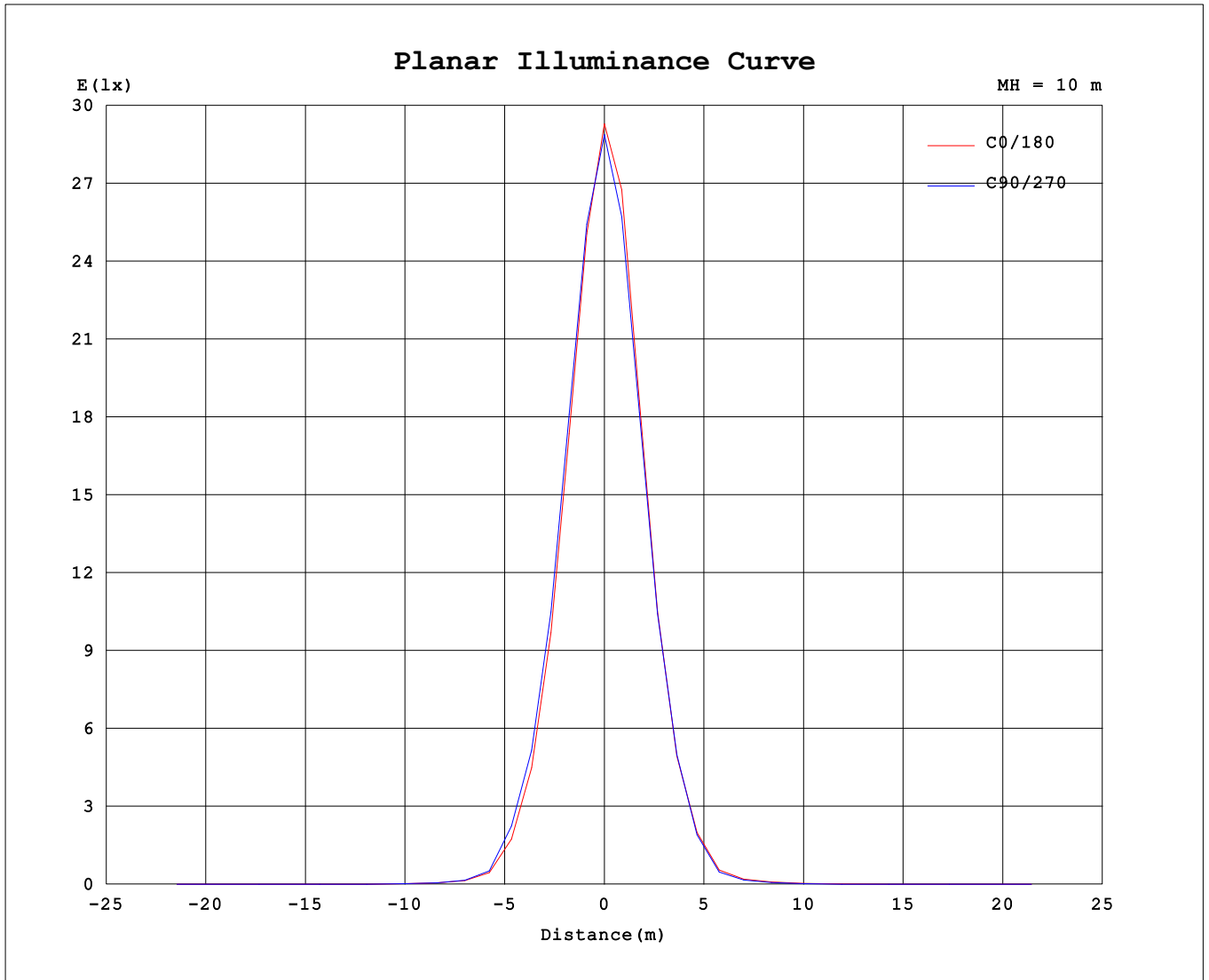
AvgL	cd/m2
L_0~180 (65) av	0
L_0~180 (75) av	0
L_0~180 (85) av	0
L_90~270 (65) av	0
L_90~270 (75) av	0
L_90~270 (85) av	0
L_45 (65) av	0
L_45 (75) av	0
L_45 (85) av	0

Standard: GB/T 29293-2012

C Range: 0 - 360DEG  
 C Interval: 15.0DEG  
 Test Speed: HIGH  
 Temperature:25.3°C  
 Operators:DAMIN  
 Test Date:2024-01-22

γ Range: 0 - 90DEG  
 γ Interval: 5.0DEG  
 Test System:EVERFINE GO-2000B\_V1 SYSTEM V2.00.473  
 Humidity:65.0%  
 Test Distance:9.401m [K=1.0000]  
 Remarks:

**Planar Illuminance Curve**



C Range: 0 - 360DEG  
 C Interval: 15.0DEG  
 Test Speed: HIGH  
 Temperature: 25.3°C  
 Operators: DAMIN  
 Test Date: 2024-01-22

γ Range: 0 - 90DEG  
 γ Interval: 5.0DEG  
 Test System: EVERFINE GO-2000B\_V1 SYSTEM V2.00.473  
 Humidity: 65.0%  
 Test Distance: 9.401m [K=1.0000]  
 Remarks:

LUMINOUS DISTRIBUTION INTENSITY DATA

Test:U:220.38V I:0.0977A P:11.857W PF:0.5505 Freq:50.00Hz Lamp Flux:714.853x1 lm		
NAME:	TYPE:	WEIGHT:
SPEC.:	DIM.:	SERIAL No.:
MFR.: EVERFINE	SUR.:	Shielding Angle:

Table--1

UNIT: cd

C (DEG) \ γ (DEG)	0	15	30	45	60	75	90	105	120	135	150	165	180	195	210	225	240	255	270
0	2895	2895	2895	2895	2895	2895	2895	2895	2895	2895	2895	2895	2895	2895	2895	2895	2895	2895	2895
5	2505	2524	2522	2539	2541	2570	2578	2615	2620	2652	2657	2754	2674	2657	2663	2637	2638	2610	2607
10	1795	1823	1816	1839	1841	1886	1899	1931	1920	1951	1949	2056	1927	1905	1921	1908	1934	1905	1908
15	1064	1089	1083	1108	1115	1160	1167	1189	1177	1203	1187	1260	1151	1132	1151	1145	1179	1159	1159
20	535	551	552	575	588	621	625	636	628	644	623	651	589	576	594	596	619	609	603
25	232	240	248	271	280	303	302	303	298	315	295	295	266	253	264	264	275	262	257
30	69.2	70.8	71.2	76.0	74.5	77.7	80.0	86.4	87.2	95.3	93.0	94.5	84.3	79.8	83.0	82.1	83.1	77.1	73.6
35	26.4	26.8	26.5	28.3	27.9	29.1	29.4	32.1	33.2	37.6	39.4	41.0	37.1	35.3	36.8	37.7	36.9	32.3	30.2
40	13.2	13.0	13.3	14.3	13.9	14.2	14.4	16.0	16.9	19.3	21.7	22.9	20.1	18.4	20.1	21.4	20.1	16.3	15.2
45	7.06	6.62	7.01	7.84	7.56	7.32	7.67	8.82	9.03	10.4	12.3	13.3	11.0	9.22	10.9	12.4	11.1	8.29	7.88
50	3.56	3.19	3.59	4.18	3.90	3.59	3.98	4.78	4.68	5.15	6.63	7.43	5.64	4.16	5.53	6.73	5.83	3.88	3.78
55	1.46	1.30	1.46	1.81	1.64	1.36	1.71	2.16	1.97	1.96	2.92	3.34	2.26	1.53	1.99	2.84	2.29	1.29	1.33
60	0.32	0.27	0.40	0.47	0.49	0.45	0.56	0.59	0.57	0.56	0.88	0.78	0.54	0.41	0.36	0.48	0.32	0.18	0.13
65	0.00	0.00	0.00	0.00	0.00	0.00	0.00	0.00	0.00	0.00	0.00	0.00	0.00	0.00	0.00	0.00	0.00	0.00	0.00
70	0.00	0.00	0.00	0.00	0.00	0.00	0.00	0.00	0.00	0.00	0.00	0.00	0.00	0.00	0.00	0.00	0.00	0.00	0.00
75	0.00	0.00	0.00	0.00	0.00	0.00	0.00	0.00	0.00	0.00	0.00	0.00	0.00	0.00	0.00	0.00	0.00	0.00	0.00
80	0.00	0.00	0.00	0.00	0.00	0.00	0.00	0.00	0.00	0.00	0.00	0.00	0.00	0.00	0.00	0.00	0.00	0.00	0.00
85	0.00	0.00	0.00	0.00	0.00	0.00	0.00	0.00	0.00	0.00	0.00	0.00	0.00	0.00	0.00	0.00	0.00	0.00	0.00
90	0.00	0.00	0.00	0.00	0.00	0.00	0.00	0.00	0.00	0.00	0.00	0.00	0.00	0.00	0.00	0.00	0.00	0.00	0.00

C Range: 0 - 360DEG  
 C Interval: 15.0DEG  
 Test Speed: HIGH  
 Temperature:25.3°C  
 Operators:DAMIN  
 Test Date:2024-01-22

γ Range: 0 - 90DEG  
 γ Interval: 5.0DEG  
 Test System:EVERFINE GO-2000B\_V1 SYSTEM V2.00.473  
 Humidity:65.0%  
 Test Distance:9.401m [K=1.0000]  
 Remarks:

LUMINOUS DISTRIBUTION INTENSITY DATA

Test:U:220.38V I:0.0977A P:11.857W PF:0.5505 Freq:50.00Hz Lamp Flux:714.853x1 lm		
NAME:	TYPE:	WEIGHT:
SPEC.:	DIM.:	SERIAL No.:
MFR.: EVERFINE	SUR.:	Shielding Angle:

Table--2

UNIT: cd

C (DEG) \ γ (DEG)	285	300	315	330	345														
0	2895	2895	2895	2895	2895														
5	2571	2556	2519	2507	2448														
10	1875	1875	1826	1803	1707														
15	1129	1138	1097	1075	991														
20	582	587	562	547	501														
25	245	249	237	235	218														
30	70.3	72.8	69.6	69.2	65.1														
35	29.5	30.2	28.6	27.8	26.0														
40	15.3	15.4	14.3	13.9	13.4														
45	8.22	8.14	7.33	7.40	7.28														
50	4.18	4.08	3.31	3.60	3.83														
55	1.61	1.39	1.11	1.36	1.63														
60	0.18	0.12	0.21	0.19	0.31														
65	0.00	0.00	0.00	0.00	0.00														
70	0.00	0.00	0.00	0.00	0.00														
75	0.00	0.00	0.00	0.00	0.00														
80	0.00	0.00	0.00	0.00	0.00														
85	0.00	0.00	0.00	0.00	0.00														
90	0.00	0.00	0.00	0.00	0.00														

C Range: 0 - 360DEG  
 C Interval: 15.0DEG  
 Test Speed: HIGH  
 Temperature:25.3°C  
 Operators:DAMIN  
 Test Date:2024-01-22

γ Range: 0 - 90DEG  
 γ Interval: 5.0DEG  
 Test System:EVERFINE GO-2000B\_V1 SYSTEM V2.00.473  
 Humidity:65.0%  
 Test Distance:9.401m [K=1.0000]  
 Remarks: