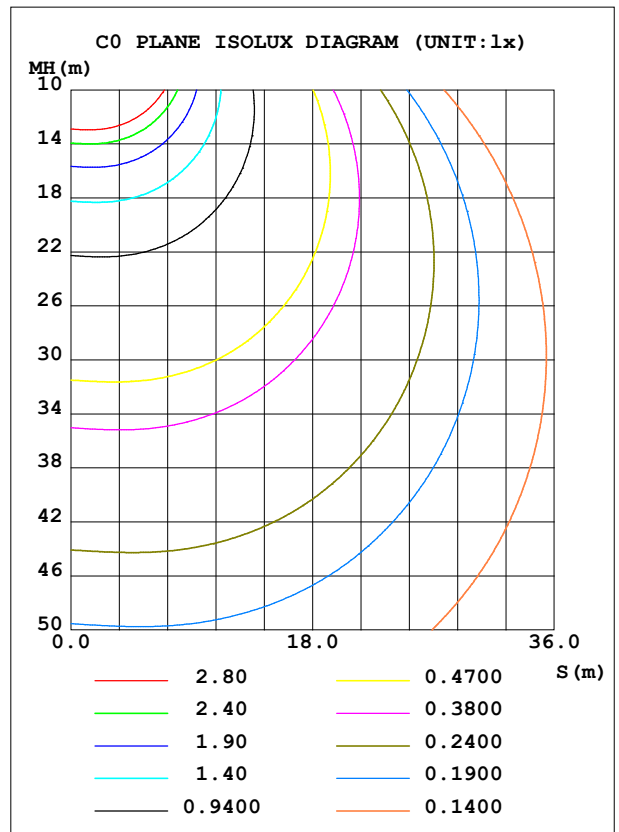
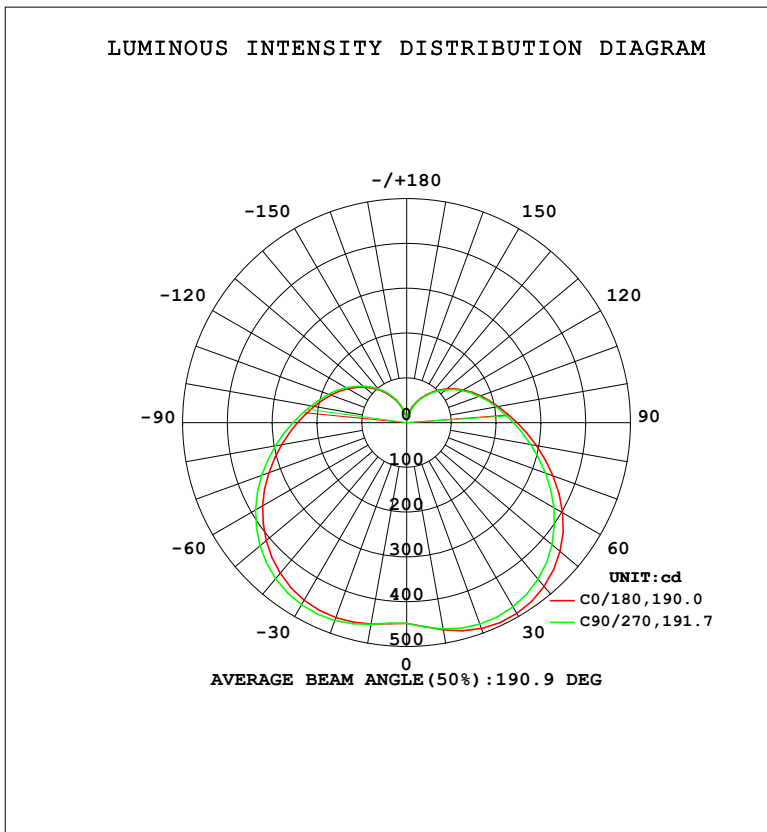


LUMINAIRE PHOTOMETRIC TEST REPORT

Test:U:220.30V I:0.2527A P:28.939W PF:0.5198 Freq:50.00Hz Lamp Flux:3285.57x1 lm		
NAME: 球泡	TYPE:	WEIGHT:
SPEC.:	DIM.:	SERIAL No.:
MFR.: EVERFINE	SUR.: 1	Shielding Angle:

DATA OF LAMP		PHOTOMETRIC DATA			
MODEL	CF62	Imax (cd)	494.3	S/MH (C0/180)	1.53
NOMINAL POWER (W)	30	LOR (%)	100.0	S/MH (C90/270)	1.57
RATED VOLTAGE (V)	220	TOTAL FLUX (lm)	3285.6	$\eta$ UP, DN (C0-180)	13.4, 36.2
NOMINAL FLUX (lm)	3285.57	CIE CLASS	SEMI-D.	$\eta$ UP, DN (C180-360)	14.1, 36.2
LAMPS INSIDE	1	$\eta$ up (%)	27.6	CIBSE SHR NOM	1.75
TEST VOLTAGE (V)	219.5	$\eta$ down (%)	72.4	CIBSE SHR MAX	1.75



C Range: 0 - 360DEG  
 C Interval: 22.5DEG  
 Test Speed: HIGH  
 Temperature: 25.3°C  
 Operators: DAMIN  
 Test Date: 2023-11-09

$\gamma$  Range: 0 - 180DEG  
 $\gamma$  Interval: 5.0DEG  
 Test System: EVERFINE GO-2000B\_V1 SYSTEM V2.00.473  
 Humidity: 65.0%  
 Test Distance: 9.401m [K=1.0000]  
 Remarks:

ZONAL FLUX DIAGRAM

ZONAL FLUX DIAGRAM:

$\gamma$	C0	C45	C90	C135	C180	C225	C270	C315	$\gamma$	$\Phi$ zone	$\Phi$ total	%lum,lamp
10	469.7	471.6	467.7	461.4	456.8	454.9	457.1	463.3	0- 10	43.58	43.58	1.33,1.33
20	488.9	488.8	478.9	468.6	463.4	464.3	470.3	480.3	10- 20	133.4	176.9	5.39,5.39
30	491.7	489.4	474.9	461.7	457.9	461.4	469.9	482.9	20- 30	220.2	397.1	12.1,12.1
40	477.7	473.2	456.2	440.9	439.1	445.3	455.2	469.5	30- 40	292.9	690.1	21,21
50	447.4	440.9	423.5	409.6	409.7	417.8	427.6	440.8	40- 50	342.9	1033	31.4,31.4
60	402.1	394.7	379.7	368.7	371.2	380.1	389.3	399.2	50- 60	365.0	1398	42.5,42.5
70	347.8	340.9	330.0	322.4	327.6	337.1	344.5	350.1	60- 70	359.1	1757	53.5,53.5
80	294.0	288.6	281.4	277.4	283.6	291.8	297.4	299.0	70- 80	331.2	2088	63.6,63.6
90	246.8	242.6	238.7	237.3	243.8	250.8	254.2	252.8	80- 90	291.5	2380	72.4,72.4
100	208.0	205.1	203.3	203.8	210.1	215.7	217.1	214.4	90-100	248.2	2628	80,80
110	176.2	173.9	173.2	175.1	180.9	185.5	185.9	182.2	100-110	205.6	2834	86.2,86.2
120	146.5	144.3	144.0	146.4	152.3	156.4	156.5	152.5	110-120	163.5	2997	91.2,91.2
130	117.8	115.6	115.5	118.1	123.6	127.6	127.5	123.6	120-130	121.8	3119	94.9,94.9
140	90.25	87.79	87.32	90.09	95.20	98.84	98.83	95.30	130-140	83.16	3202	97.5,97.5
150	63.13	60.64	59.88	62.54	67.28	70.63	70.66	67.66	140-150	49.96	3252	99,99
160	37.49	35.04	34.21	36.53	40.62	43.52	43.60	41.17	150-160	24.37	3276	99.7,99.7
170	16.06	14.35	13.79	15.44	18.27	20.11	20.07	18.28	160-170	8.077	3284	100,100
180	5.881	5.916	5.935	5.956	6.002	5.970	5.965	6.115	170-180	1.152	3286	100,100
DEG	LUMINOUS INTENSITY:cd									UNIT:lm		

Conical surface Flux(90deg): 856.93 lm

%lum = 26.1%

%lamp = 26.1%

Conical surface Flux(130deg): 1579.8 lm

%lum = 48.1%

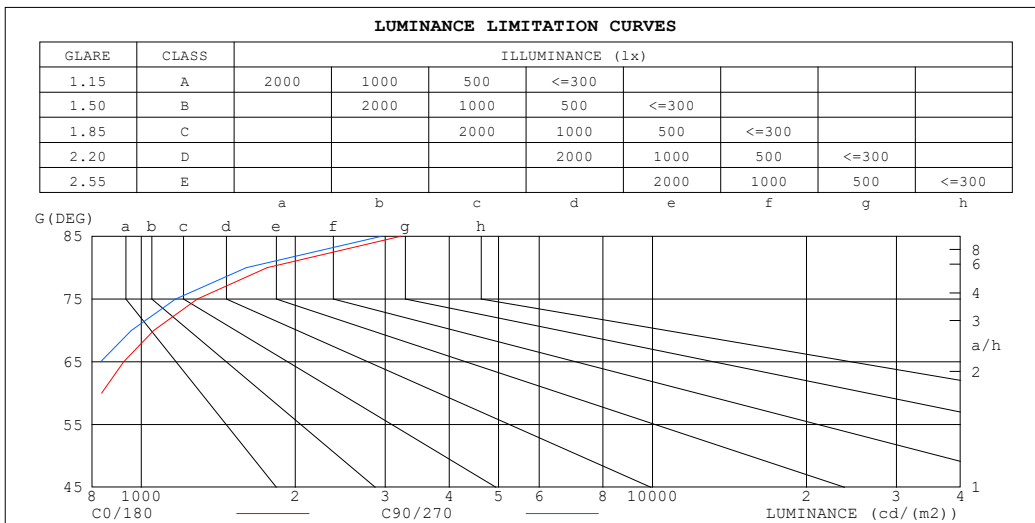
%lamp = 48.1%

C Range: 0 - 360DEG  
 C Interval: 22.5DEG  
 Test Speed: HIGH  
 Temperature:25.3°C  
 Operators:DAMIN  
 Test Date:2023-11-09

$\gamma$  Range: 0 - 180DEG  
 $\gamma$  Interval: 5.0DEG  
 Test System:EVERFINE GO-2000B\_V1 SYSTEM V2.00.473  
 Humidity:65.0%  
 Test Distance:9.401m [K=1.0000]  
 Remarks:

**LUMINANCE LIMITATION CURVES**

Test:U:220.30V I:0.2527A P:28.939W PF:0.5198 Freq:50.00Hz Lamp Flux:3285.57x1 lm		
NAME: 球泡	TYPE:	WEIGHT:
SPEC.:	DIM.:	SERIAL No.:
MFR.: EVERFINE	SUR.: 1	Shielding Angle:



LUMINANCE cd/(m2)		
G (DEG)	C0/180	C90/270
85	3216	2946
80	1761	1604
75	1287	1167
70	1058	956
65	924	832
60	837	752
55	773	695
50	724	652
45	684	618

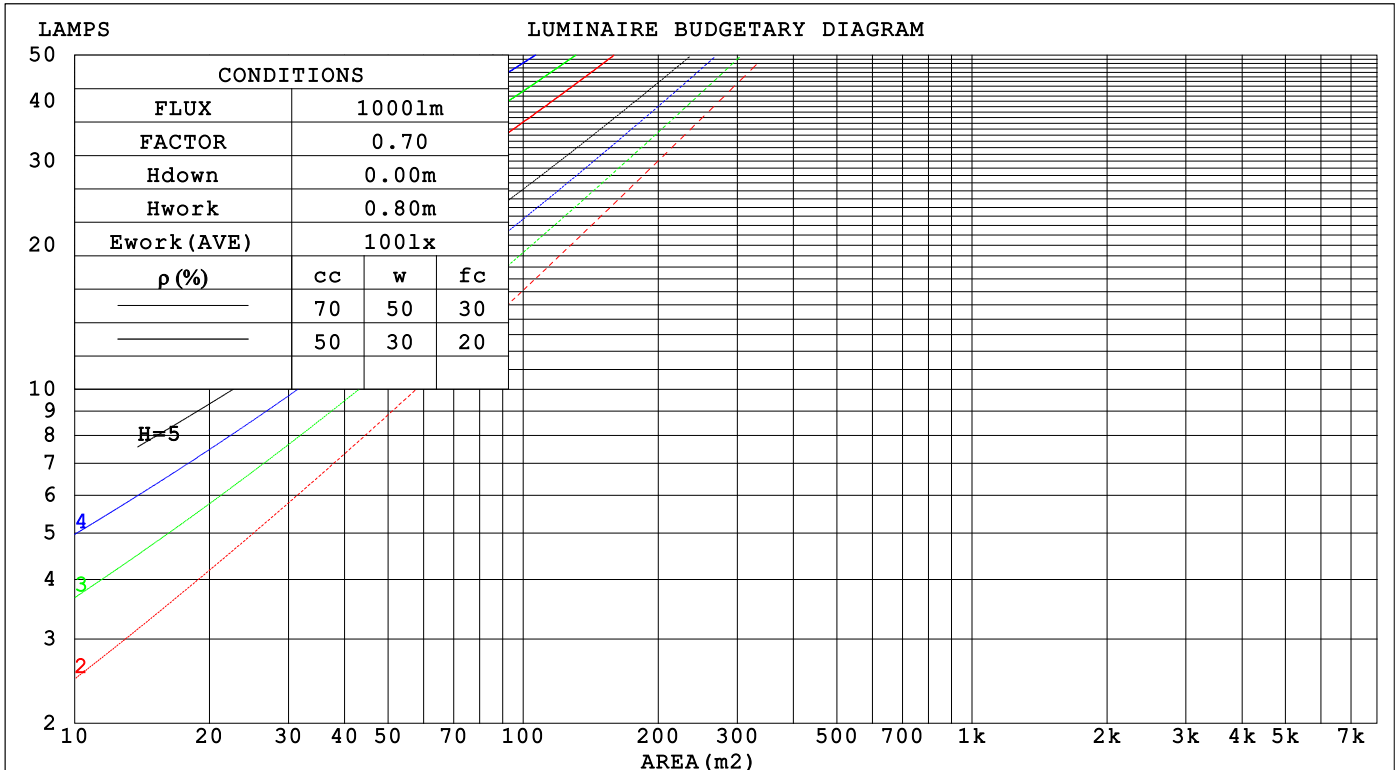
C Range: 0 - 360DEG  
 C Interval: 22.5DEG  
 Test Speed: HIGH  
 Temperature:25.3°C  
 Operators:DAMIN  
 Test Date:2023-11-09

γ Range: 0 - 180DEG  
 γ Interval: 5.0DEG  
 Test System:EVERFINE GO-2000B\_V1 SYSTEM V2.00.473  
 Humidity:65.0%  
 Test Distance:9.401m [K=1.0000]  
 Remarks:

**CU AND LUMINAIRE BUDGETARY ESTIMATE DIAGRAM**

Test:U:220.30V I:0.2527A P:28.939W PF:0.5198 Freq:50.00Hz Lamp Flux:3285.57x1 lm		
NAME: 球泡	TYPE:	WEIGHT:
SPEC.:	DIM.:	SERIAL No.:
MFR.: EVERFINE	SUR.: 1	Shielding Angle:

ρcc	80%			70%			50%			30%			10%			0
ρw	50%	30%	10%	50%	30%	10%	50%	30%	10%	50%	30%	10%	50%	30%	10%	0
ρfc	20%			20%			20%			20%			20%			0
RCR	RCR:Room Cavity Ratio															
	Coefficients of Utilization(CU)															
0.0	1.12	1.12	1.12	1.07	1.07	1.07	.96	.96	.96	.86	.86	.86	.77	.77	.77	.72
1.0	.92	.87	.81	.87	.82	.78	.78	.74	.70	.69	.66	.63	.61	.59	.56	.52
2.0	.78	.70	.63	.74	.67	.60	.66	.60	.55	.58	.54	.49	.51	.48	.44	.40
3.0	.67	.58	.51	.64	.55	.49	.57	.50	.44	.50	.45	.40	.44	.40	.36	.32
4.0	.59	.49	.42	.56	.47	.40	.50	.42	.37	.44	.38	.33	.39	.34	.30	.27
5.0	.52	.42	.35	.49	.40	.34	.44	.37	.31	.39	.33	.28	.34	.29	.25	.22
6.0	.46	.37	.30	.44	.35	.29	.39	.32	.26	.35	.29	.24	.31	.26	.22	.19
7.0	.42	.32	.26	.39	.31	.25	.35	.28	.23	.32	.25	.21	.28	.23	.19	.16
8.0	.38	.29	.23	.36	.28	.22	.32	.25	.20	.29	.23	.18	.26	.21	.17	.14
9.0	.34	.26	.20	.33	.25	.19	.29	.23	.18	.26	.21	.16	.24	.19	.15	.13
10.0	.31	.23	.18	.30	.22	.17	.27	.21	.16	.24	.19	.15	.22	.17	.13	.11



C Range: 0 - 360DEG  
 C Interval: 22.5DEG  
 Test Speed: HIGH  
 Temperature:25.3°C  
 Operators:DAMIN  
 Test Date:2023-11-09

γ Range: 0 - 180DEG  
 γ Interval: 5.0DEG  
 Test System:EVERFINE GO-2000B\_V1 SYSTEM V2.00.473  
 Humidity:65.0%  
 Test Distance:9.401m [K=1.0000]  
 Remarks:

WEC AND CCEC

Test:U:220.30V I:0.2527A P:28.939W PF:0.5198 Freq:50.00Hz Lamp Flux:3285.57x1 lm		
NAME: 球泡	TYPE:	WEIGHT:
SPEC.:	DIM.:	SERIAL No.:
MFR.: EVERFINE	SUR.: 1	Shielding Angle:

$\rho_{CC}$	80%			70%			50%			30%			10%			0
$\rho_w$	50%	30%	10%	50%	30%	10%	50%	30%	10%	50%	30%	10%	50%	30%	10%	0
$\rho_{fc}$	20%			20%			20%			20%			20%			0
RCR	RCR:Room Cavity Ratio						Wall Exitance Coefficients (WEC)									
0.0																
1.0	.406	.231	.073	.391	.223	.071	.361	.207	.066	.334	.193	.062	.310	.179	.058	
2.0	.345	.189	.058	.331	.182	.056	.304	.169	.053	.280	.157	.049	.257	.145	.046	
3.0	.304	.162	.048	.291	.156	.047	.267	.144	.044	.244	.134	.041	.223	.124	.038	
4.0	.272	.141	.042	.260	.136	.040	.238	.126	.038	.217	.117	.035	.198	.108	.033	
5.0	.246	.125	.036	.235	.121	.035	.215	.112	.033	.196	.104	.031	.179	.095	.029	
6.0	.224	.113	.032	.215	.108	.031	.196	.101	.029	.179	.093	.027	.163	.086	.025	
7.0	.206	.102	.029	.197	.098	.028	.180	.091	.026	.165	.084	.025	.150	.078	.023	
8.0	.191	.093	.026	.183	.090	.025	.167	.083	.024	.152	.077	.022	.139	.071	.021	
9.0	.178	.086	.024	.170	.083	.023	.156	.077	.022	.142	.071	.020	.129	.066	.019	
10.0	.166	.080	.022	.159	.077	.021	.146	.071	.020	.133	.066	.019	.121	.061	.017	

$\rho_{CC}$	80%			70%			50%			30%			10%			0
$\rho_w$	50%	30%	10%	50%	30%	10%	50%	30%	10%	50%	30%	10%	50%	30%	10%	0
$\rho_{fc}$	20%			20%			20%			20%			20%			0
RCR	RCR:Room Cavity Ratio						Ceiling Cavity Exitance Coefficients (CCEC)									
0.0	.401	.401	.401	.342	.342	.342	.234	.234	.234	.134	.134	.134	.043	.043	.043	
1.0	.399	.367	.339	.341	.315	.291	.233	.217	.201	.134	.125	.117	.043	.040	.038	
2.0	.393	.345	.305	.336	.297	.263	.230	.205	.184	.133	.119	.108	.043	.039	.035	
3.0	.385	.329	.284	.330	.284	.246	.227	.197	.173	.131	.115	.102	.042	.037	.033	
4.0	.378	.317	.270	.324	.274	.235	.223	.191	.165	.129	.112	.098	.041	.036	.032	
5.0	.370	.307	.261	.318	.266	.227	.219	.186	.160	.127	.109	.095	.041	.036	.031	
6.0	.363	.300	.254	.312	.259	.221	.215	.182	.157	.125	.107	.093	.040	.035	.031	
7.0	.356	.293	.249	.306	.254	.217	.211	.178	.154	.123	.105	.092	.040	.034	.030	
8.0	.349	.288	.246	.300	.250	.214	.208	.175	.152	.121	.103	.091	.039	.034	.030	
9.0	.343	.283	.243	.295	.246	.212	.204	.173	.150	.119	.102	.090	.039	.033	.030	
10.0	.337	.279	.240	.290	.242	.210	.201	.170	.149	.117	.101	.089	.038	.033	.030	

C Range: 0 - 360DEG  
 C Interval: 22.5DEG  
 Test Speed: HIGH  
 Temperature:25.3°C  
 Operators:DAMIN  
 Test Date:2023-11-09

$\gamma$  Range: 0 - 180DEG  
 $\gamma$  Interval: 5.0DEG  
 Test System:EVERFINE GO-2000B\_V1 SYSTEM V2.00.473  
 Humidity:65.0%  
 Test Distance:9.401m [K=1.0000]  
 Remarks:

**UGR(Unified Glare Rating) Table**

Test:U:220.30V I:0.2527A P:28.939W PF:0.5198 Freq:50.00Hz										
Lamp Flux:3285.57x1 lm										
NAME: 球泡			TYPE:				WEIGHT:			
SPEC.:			DIM.:				SERIAL No.:			
MFR.: EVERFINE			SUR.: 1				Shielding Angle:			
ceiling/cavity	0.7	0.7	0.5	0.5	0.3	0.7	0.7	0.5	0.5	0.3
walls	0.5	0.3	0.5	0.3	0.3	0.5	0.3	0.5	0.3	0.3
working plane	0.2	0.2	0.2	0.2	0.2	0.2	0.2	0.2	0.2	0.2
Room dimensions	Viewed crosswise					Viewed endwise				
x = 2H y = 2H	6.4	7.7	7.0	8.4	9.1	6.0	7.3	6.6	7.9	8.7
3H	9.0	10.2	9.7	10.9	11.7	8.5	9.7	9.2	10.4	11.2
4H	10.4	11.6	11.1	12.2	13.1	9.9	11.0	10.6	11.7	12.5
6H	12.0	13.0	12.7	13.8	14.6	11.4	12.5	12.1	13.2	14.0
8H	12.8	13.9	13.5	14.6	15.4	12.3	13.3	13.0	14.0	14.9
12H	13.9	14.8	14.6	15.6	16.4	13.3	14.3	14.0	15.0	15.9
4H 2H	7.2	8.3	7.8	9.0	9.8	6.9	8.0	7.5	8.7	9.5
3H	10.0	10.9	10.7	11.7	12.5	9.6	10.6	10.3	11.3	12.2
4H	11.5	12.4	12.3	13.2	14.1	11.1	12.0	11.8	12.8	13.7
6H	13.3	14.1	14.0	14.9	15.8	12.8	13.6	13.6	14.4	15.3
8H	14.3	15.0	15.0	15.8	16.7	13.8	14.5	14.6	15.3	16.3
12H	15.4	16.1	16.2	16.9	17.8	14.9	15.6	15.7	16.4	17.3
8H 4H	12.1	12.8	12.8	13.6	14.6	11.7	12.5	12.5	13.3	14.2
6H	14.1	14.8	14.9	15.6	16.5	13.7	14.4	14.5	15.2	16.2
8H	15.3	15.9	16.1	16.7	17.7	14.9	15.5	15.7	16.3	17.3
12H	16.6	17.1	17.5	18.0	19.0	16.2	16.7	17.0	17.6	18.6
12H 4H	12.2	12.9	13.0	13.7	14.7	11.9	12.6	12.7	13.4	14.4
6H	14.3	14.9	15.2	15.7	16.7	14.0	14.6	14.8	15.4	16.4
8H	15.6	16.1	16.5	17.0	18.0	15.3	15.8	16.1	16.6	17.6
Variations with the observer position at spacings(CIE Pub.117):										
S = 1.0H	+ 0.1 / - 0.1					+ 0.1 / - 0.1				
1.5H	+ 0.2 / - 0.3					+ 0.2 / - 0.3				
2.0H	+ 0.2 / - 0.4					+ 0.3 / - 0.4				

CIE Pub.117, 3286 lm Total Lamp Luminous Flux Correct (8log(F/F0) = 4.1)  
Area: 1 m2

C Range: 0 - 360DEG  
C Interval: 22.5DEG  
Test Speed: HIGH  
Temperature:25.3°C  
Operators:DAMIN  
Test Date:2023-11-09

γ Range: 0 - 180DEG  
γ Interval: 5.0DEG  
Test System:EVERFINE GO-2000B\_V1 SYSTEM V2.00.473  
Humidity:65.0%  
Test Distance:9.401m [K=1.0000]  
Remarks:

**UTILIZATION FACTORS TABLE**

Test:U:220.30V I:0.2527A P:28.939W PF:0.5198 Freq:50.00Hz Lamp Flux:3285.57x1 lm		
NAME: 球泡	TYPE:	WEIGHT:
SPEC.:	DIM.:	SERIAL No.:
MFR.: EVERFINE	SUR.: 1	Shielding Angle:

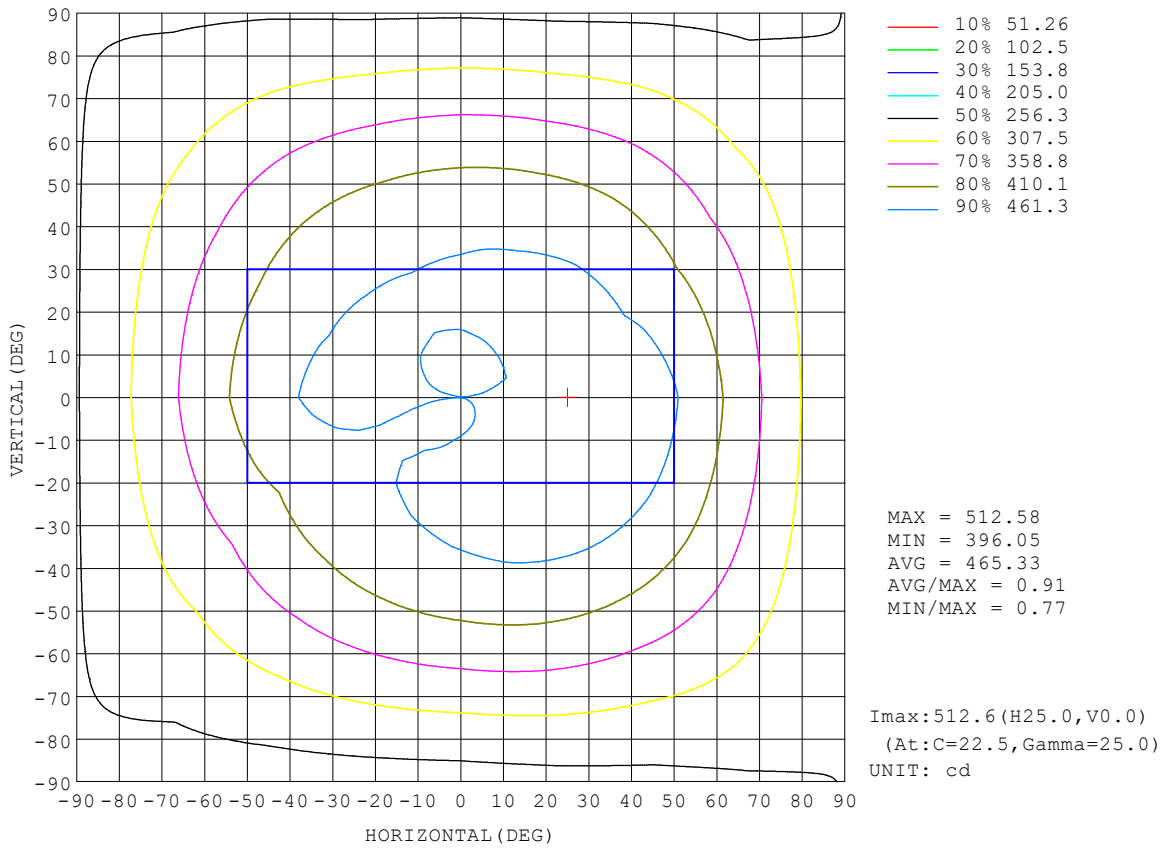
REFLECTANCE										
Ceiling	0.8	0.8	0.8	0.7	0.7	0.7	0.5	0.5	0.5	0
Walls	0.7	0.5	0.3	0.7	0.5	0.3	0.7	0.5	0.3	0
Working plane	0.2	0.2	0.2	0.2	0.2	0.2	0.2	0.2	0.2	0
ROOM INDEX	UTILIZATION FACTORS (PERCENT) $k(RI) \times RCR = 5$									
k = 0.60	43	30	23	42	30	23	39	28	22	15
0.80	52	38	30	50	37	29	47	36	28	20
1.00	59	46	37	57	44	36	53	44	35	25
1.25	66	53	44	64	51	43	58	48	41	30
1.50	72	59	49	68	56	48	62	53	45	33
2.00	79	67	58	75	65	56	68	60	53	39
2.50	84	73	64	80	70	62	72	64	58	43
3.00	88	78	70	83	74	67	75	68	62	46
4.00	93	84	77	88	80	74	79	73	68	50
5.00	96	88	82	91	84	78	82	77	72	54
ROOM INDEX	UF(total)									Direct
According to DIN EN 13032-2 2004			Suspended				SHRNOM = 1.25			

C Range: 0 - 360DEG  
 C Interval: 22.5DEG  
 Test Speed: HIGH  
 Temperature:25.3°C  
 Operators:DAMIN  
 Test Date:2023-11-09

$\gamma$  Range: 0 - 180DEG  
 $\gamma$  Interval: 5.0DEG  
 Test System:EVERFINE GO-2000B\_V1 SYSTEM V2.00.473  
 Humidity:65.0%  
 Test Distance:9.401m [K=1.0000]  
 Remarks:

**ISOCANDELA DIAGRAM**

Test:U:220.30V I:0.2527A P:28.939W PF:0.5198 Freq:50.00Hz Lamp Flux:3285.57x1 lm		
NAME: 球泡	TYPE:	WEIGHT:
SPEC.:	DIM.:	SERIAL No.:
MFR.: EVERFINE	SUR.: 1	Shielding Angle:



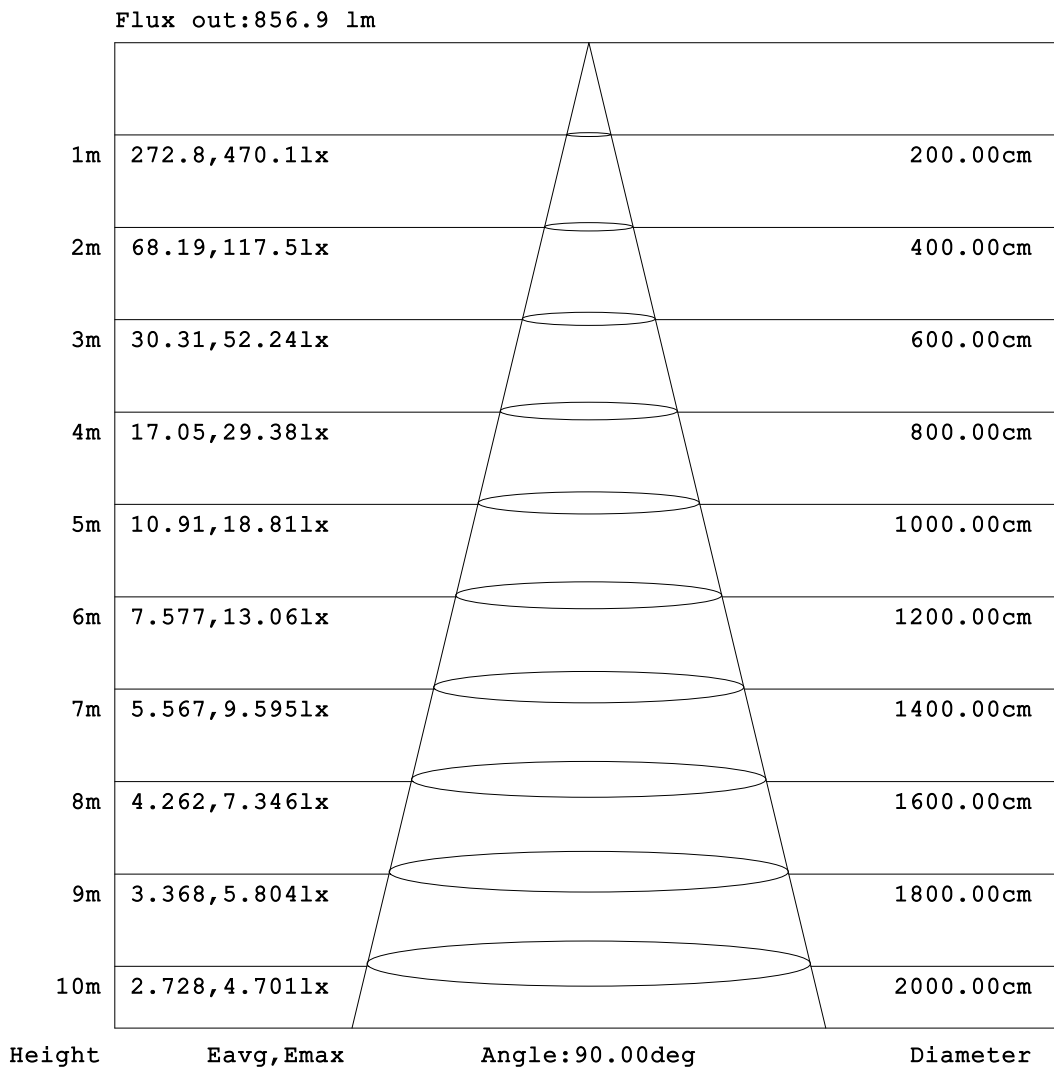
C Range: 0 - 360DEG  
 C Interval: 22.5DEG  
 Test Speed: HIGH  
 Temperature: 25.3°C  
 Operators: DAMIN  
 Test Date: 2023-11-09

γ Range: 0 - 180DEG  
 γ Interval: 5.0DEG  
 Test System: EVERFINE GO-2000B\_V1 SYSTEM V2.00.473  
 Humidity: 65.0%  
 Test Distance: 9.401m [K=1.0000]  
 Remarks:



**AAI Figure**

Test:U:220.30V I:0.2527A P:28.939W PF:0.5198 Freq:50.00Hz Lamp Flux:3285.57x1 lm		
NAME: 球泡	TYPE:	WEIGHT:
SPEC.:	DIM.:	SERIAL No.:
MFR.: EVERFINE	SUR.: 1	Shielding Angle:



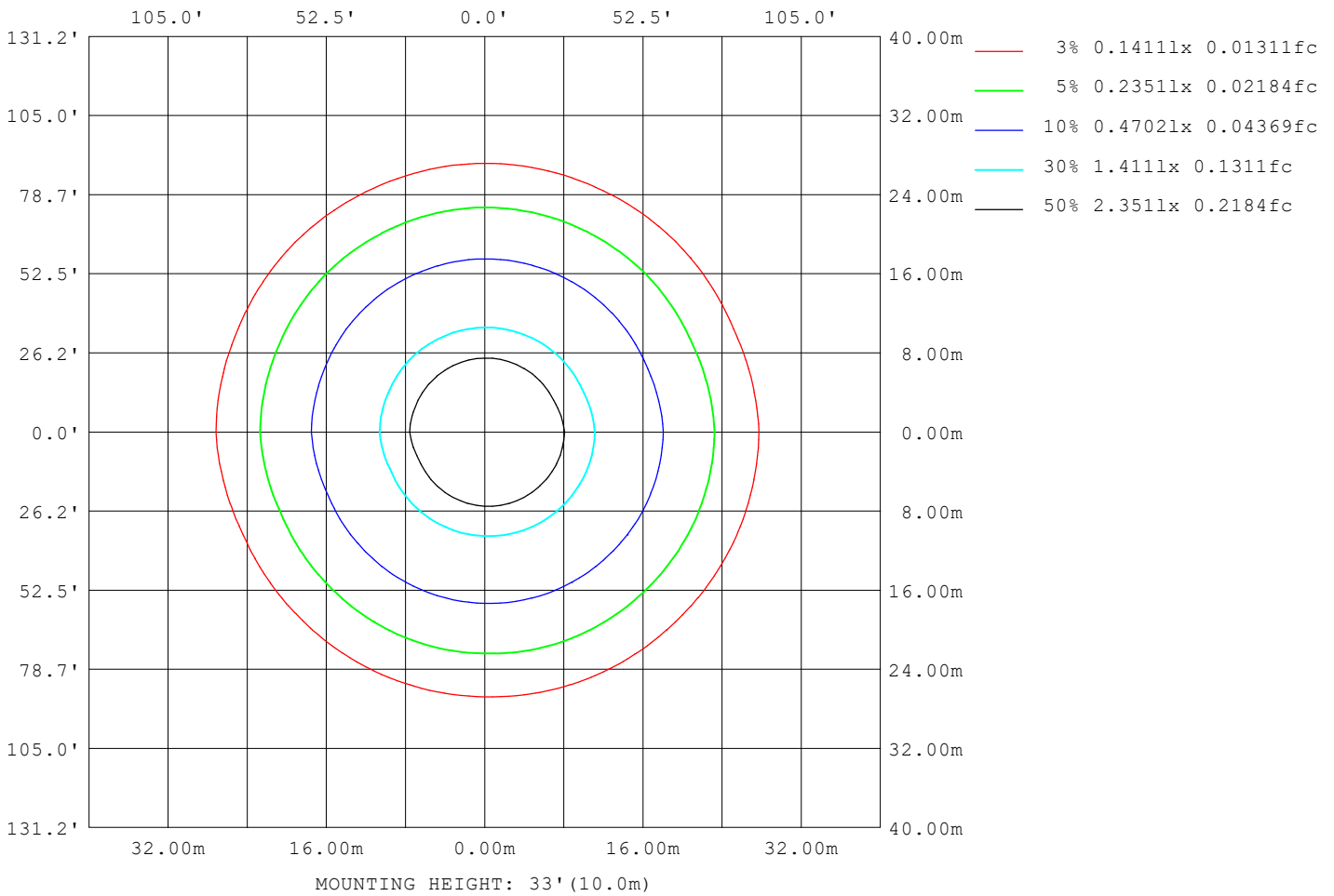
Note: The Curves indicate the illuminated area and the average illumination when the luminaire is at different distance.

C Range: 0 - 360DEG  
C Interval: 22.5DEG  
Test Speed: HIGH  
Temperature: 25.3°C  
Operators: DAMIN  
Test Date: 2023-11-09

γ Range: 0 - 180DEG  
γ Interval: 5.0DEG  
Test System: EVERFINE GO-2000B\_V1 SYSTEM V2.00.473  
Humidity: 65.0%  
Test Distance: 9.401m [K=1.0000]  
Remarks:

**ISOLUX DIAGRAM**

Test:U:220.30V I:0.2527A P:28.939W PF:0.5198 Freq:50.00Hz Lamp Flux:3285.57x1 lm		
NAME: 球泡	TYPE:	WEIGHT:
SPEC.:	DIM.:	SERIAL No.:
MFR.: EVERFINE	SUR.: 1	Shielding Angle:



C Range: 0 - 360DEG  
 C Interval: 22.5DEG  
 Test Speed: HIGH  
 Temperature:25.3°C  
 Operators:DAMIN  
 Test Date:2023-11-09

γ Range: 0 - 180DEG  
 γ Interval: 5.0DEG  
 Test System:EVERFINE GO-2000B\_V1 SYSTEM V2.00.473  
 Humidity:65.0%  
 Test Distance:9.401m [K=1.0000]  
 Remarks:

**LED Avg.L Report**

Test:U:220.30V I:0.2527A P:28.939W PF:0.5198 Freq:50.00Hz Lamp Flux:3285.57x1 lm		
NAME: 球泡	TYPE:	WEIGHT:
SPEC.:	DIM.:	SERIAL No.:
MFR.: EVERFINE	SUR.: 1	Shielding Angle:

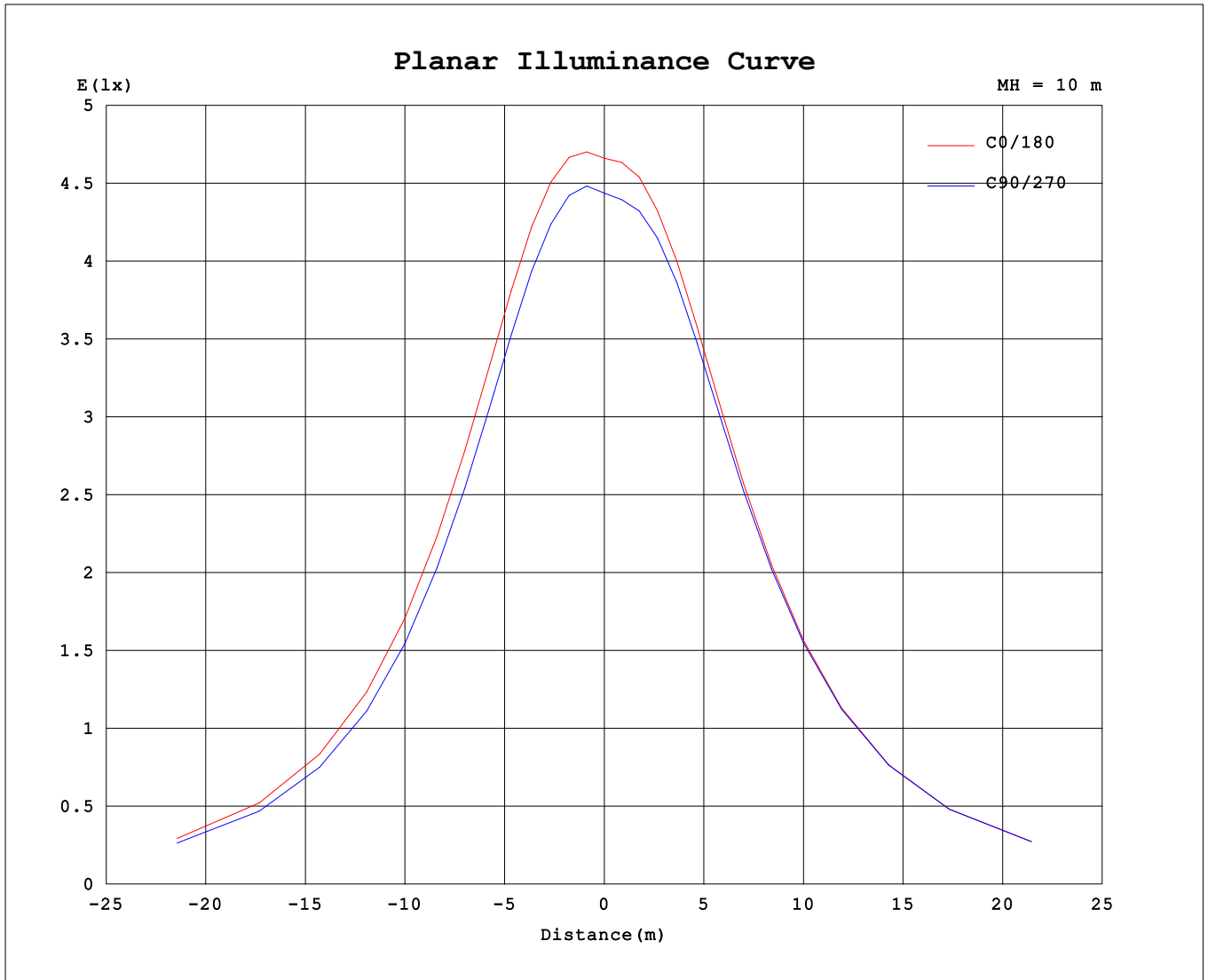
AvgL	cd/m2
L_0~180 (65) av	858
L_0~180 (75) av	1208
L_0~180 (85) av	3054
L_90~270 (65) av	855
L_90~270 (75) av	1208
L_90~270 (85) av	3065
L_45 (65) av	856
L_45 (75) av	1209
L_45 (85) av	3061

Standard: GB/T 29293-2012

C Range: 0 - 360DEG  
 C Interval: 22.5DEG  
 Test Speed: HIGH  
 Temperature:25.3℃  
 Operators:DAMIN  
 Test Date:2023-11-09

γ Range: 0 - 180DEG  
 γ Interval: 5.0DEG  
 Test System:EVERFINE GO-2000B\_V1 SYSTEM V2.00.473  
 Humidity:65.0%  
 Test Distance:9.401m [K=1.0000]  
 Remarks:

**Planar Illuminance Curve**



C Range: 0 - 360DEG  
 C Interval: 22.5DEG  
 Test Speed: HIGH  
 Temperature: 25.3°C  
 Operators: DAMIN  
 Test Date: 2023-11-09

γ Range: 0 - 180DEG  
 γ Interval: 5.0DEG  
 Test System: EVERFINE GO-2000B\_V1 SYSTEM V2.00.473  
 Humidity: 65.0%  
 Test Distance: 9.401m [K=1.0000]  
 Remarks:

LUMINOUS DISTRIBUTION INTENSITY DATA

Test:U:220.30V I:0.2527A P:28.939W PF:0.5198 Freq:50.00Hz Lamp Flux:3285.57x1 lm		
NAME: 球泡	TYPE:	WEIGHT:
SPEC.:	DIM.:	SERIAL No.:
MFR.: EVERFINE	SUR.: 1	Shielding Angle:

Table--1

UNIT: cd

C (DEG) \ γ (DEG)	0	22.5	45	67.5	90	112.5	135	157.5	180	202.5	225	247.5	270	292.5	315	337.5				
0	448	448	448	448	448	448	448	448	448	448	448	448	448	448	448	448				
5	457	459	459	459	458	456	454	453	451	449	448	449	449	449	451	453	456			
10	470	472	472	470	468	465	461	459	457	455	455	456	457	460	463	468				
15	481	483	482	479	475	471	467	464	461	460	461	462	465	469	473	478				
20	489	491	489	485	479	473	469	466	463	463	464	467	470	475	480	486				
25	493	494	491	487	479	473	467	464	463	462	465	468	472	477	484	490				
30	492	493	489	484	475	468	462	458	458	458	461	465	470	476	483	490				
35	487	489	483	477	467	460	453	450	450	451	455	459	464	471	478	485				
40	478	479	473	466	456	448	441	440	439	440	445	449	455	461	469	476				
45	465	465	459	452	442	433	427	425	426	427	433	437	443	449	457	463				
50	447	448	441	434	424	416	410	408	410	412	418	422	428	434	441	447				
55	426	426	419	413	403	396	390	389	391	393	400	404	410	414	422	427				
60	402	402	395	389	380	374	369	369	371	373	380	384	389	393	399	403				
65	375	375	368	364	355	351	346	347	350	352	359	363	368	371	375	377				
70	348	348	341	338	330	327	322	325	328	329	337	340	345	346	350	350				
75	320	321	314	312	305	303	299	302	305	307	314	316	321	321	324	324				
80	294	294	289	287	281	280	277	280	284	285	292	294	297	297	299	298				
85	269	270	265	264	259	258	257	260	263	264	271	272	275	274	275	273				
90	247	247	243	243	239	239	237	241	244	245	251	252	254	252	253	250				
95	226	227	223	223	220	221	220	223	226	227	233	233	235	233	233	230				
100	208	208	205	206	203	204	204	207	210	211	216	216	217	215	214	212				
105	191	192	189	190	188	189	190	192	195	196	200	200	201	198	198	195				
110	176	176	174	175	173	174	175	178	181	182	185	186	186	184	182	180				
115	161	161	159	160	158	160	161	164	167	167	171	171	171	169	167	165				
120	146	146	144	145	144	145	146	149	152	153	156	157	157	154	152	150				
125	132	132	130	130	130	131	132	135	138	139	142	142	142	140	138	135				
130	118	118	116	116	115	117	118	121	124	125	128	128	127	125	124	121				
135	104	103	102	102	101	103	104	107	109	110	113	113	113	111	109	107				
140	90.2	89.6	87.8	88.0	87.3	88.5	90.1	92.8	95.2	96.2	98.8	99.0	98.8	97.0	95.3	92.9				
145	76.5	75.9	74.1	74.2	73.5	74.7	76.2	78.9	81.3	82.1	84.7	84.8	84.6	83.0	81.4	79.1				
150	63.1	62.4	60.6	60.6	59.9	61.0	62.5	65.0	67.3	68.3	70.6	70.7	70.7	69.1	67.7	65.4				
155	50.0	49.2	47.5	47.3	46.8	47.7	49.2	51.6	53.7	54.8	56.8	57.0	56.9	55.6	54.2	52.1				
160	37.5	36.6	35.0	34.8	34.2	35.2	36.5	38.8	40.6	41.8	43.5	43.8	43.6	42.5	41.2	39.3				
165	25.9	25.0	23.6	23.3	22.9	23.7	25.0	26.9	28.6	29.6	31.1	31.2	31.2	30.1	29.0	27.3				
170	16.1	15.4	14.3	14.0	13.8	14.5	15.4	16.9	18.3	19.1	20.1	20.2	20.1	19.2	18.3	17.0				
175	8.63	8.47	8.29	8.36	8.57	8.99	9.54	10.11	10.6	11.1	11.6	11.6	11.4	10.8	10.2	9.42				
180	5.88	5.98	5.92	5.97	5.93	5.96	5.96	6.05	6.00	5.91	5.97	5.95	5.97	6.09	6.12	6.19				

C Range: 0 - 360DEG  
 C Interval: 22.5DEG  
 Test Speed: HIGH  
 Temperature:25.3℃  
 Operators:DAMIN  
 Test Date:2023-11-09

γ Range: 0 - 180DEG  
 γ Interval: 5.0DEG  
 Test System:EVERFINE GO-2000B\_V1 SYSTEM V2.00.473  
 Humidity:65.0%  
 Test Distance:9.401m [K=1.0000]  
 Remarks: