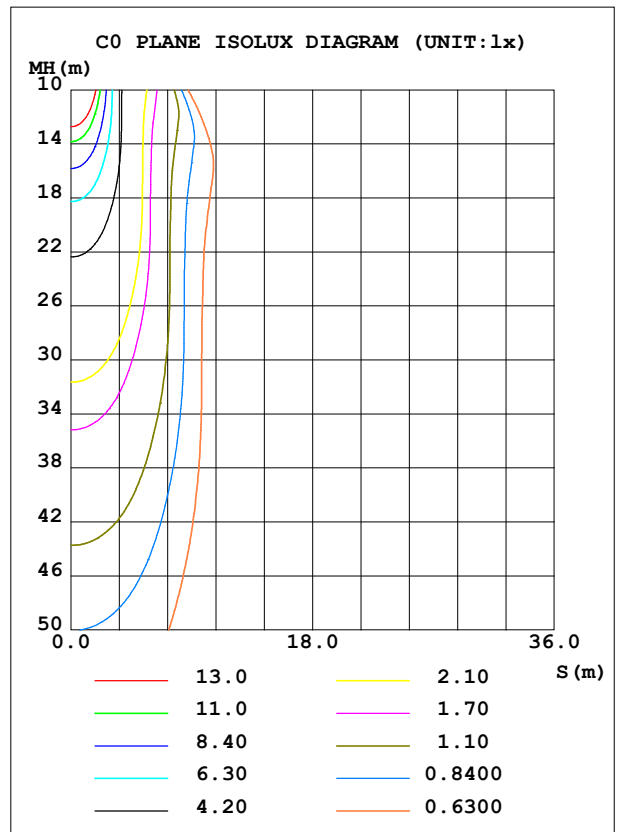
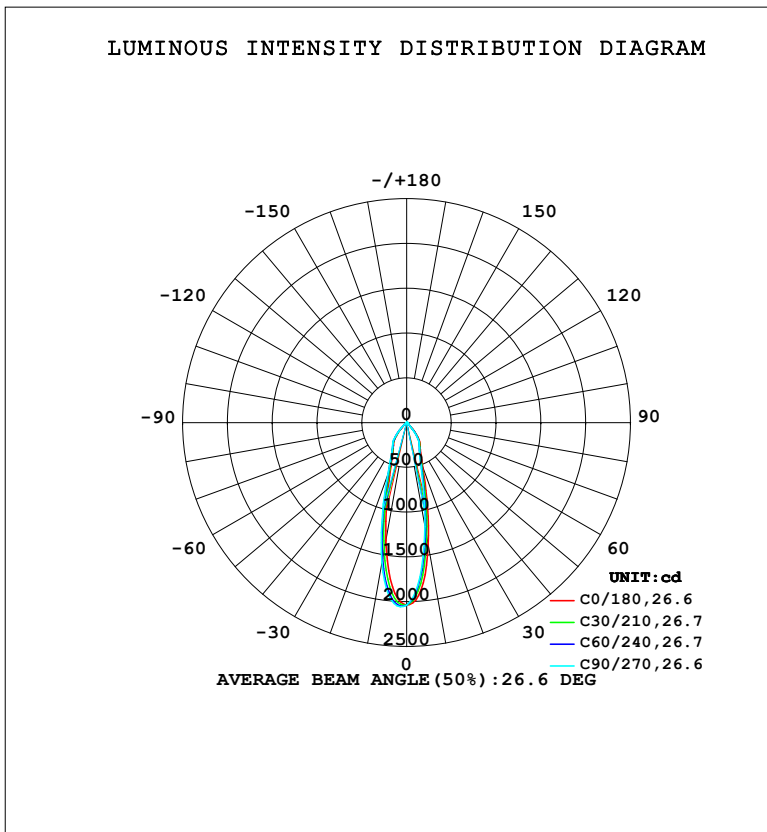


LUMINAIRE PHOTOMETRIC TEST REPORT

Test:U:220.39V I:0.0611A P:6.8939W PF:0.5123 Freq:50.00Hz Lamp Flux:798.228x1 lm		
NAME:	TYPE: 射灯	WEIGHT:
SPEC.:	DIM.:	SERIAL No.:
MFR.: EVERFINE	SUR.:	Shielding Angle:

DATA OF LAMP		PHOTOMETRIC DATA				Eff: 115.79 lm/W
MODEL	GU10-A	I _{max} (cd)	2058	S/MH (C0/180)	0.44	
NOMINAL POWER (W)	7	LOR (%)	100.0	S/MH (C90/270)	0.51	
RATED VOLTAGE (V)	220	TOTAL FLUX (lm)	798.23	η UP, DN (C0-180)	0.0, 46.0	
NOMINAL FLUX (lm)	798.228	CIE CLASS	DIRECT	η UP, DN (C180-360)	0.0, 54.0	
LAMPS INSIDE	1	η up (%)	0.0	CIBSE SHR NOM	0.50	
TEST VOLTAGE (V)	219.5	η down (%)	100.0	CIBSE SHR MAX	0.50	



C Range: 0 - 360DEG
 C Interval: 15.0DEG
 Test Speed: HIGH
 Temperature: 25.3°C
 Operators: DAMIN
 Test Date: 2023-12-20

γ Range: 0 - 90DEG
 γ Interval: 1.0DEG
 Test System: EVERFINE GO-2000B_V1 SYSTEM V2.00.473
 Humidity: 65.0%
 Test Distance: 9.401m [K=1.0000]
 Remarks:

ZONAL FLUX DIAGRAM

ZONAL FLUX DIAGRAM:

γ	C0	C45	C90	C135	C180	C225	C270	C315	γ	Φ zone	Φ total	%lum,lamp
10	1389	1262	1180	1224	1342	1490	1587	1521	0- 10	161.4	161.4	20.2,20.2
20	530.4	481.4	456.5	476.0	521.5	576.6	623.2	589.5	10- 20	241.4	402.8	50.5,50.5
30	303.1	290.1	282.1	286.7	298.4	308.4	320.8	313.6	20- 30	176.5	579.3	72.6,72.6
40	166.1	142.3	127.0	133.1	151.4	171.0	188.5	180.3	30- 40	148.7	728.0	91.2,91.2
50	16.84	15.69	15.92	17.34	17.61	18.92	21.69	19.26	40- 50	54.55	782.6	98,98
60	5.749	5.305	5.205	5.987	6.605	7.582	7.736	6.503	50- 60	10.29	792.8	99.3,99.3
70	1.943	1.964	1.958	1.934	1.894	2.085	1.865	1.831	60- 70	3.277	796.1	99.7,99.7
80	0.8289	0.8513	0.9575	0.9487	0.9562	0.9234	0.7506	0.8024	70- 80	1.439	797.6	99.9,99.9
90	0	0	0	0	0	0.1786	0.3271	0.1959	80- 90	0.6665	798.2	100,100
100									90-100			
110									100-110			
120									110-120			
130									120-130			
140									130-140			
150									140-150			
160									150-160			
170									160-170			
180									170-180			
DEG	LUMINOUS INTENSITY:cd									UNIT:lm		

Conical surface Flux(90deg): 768.28 lm

%lum = 96.2%

%lamp = 96.2%

Conical surface Flux(130deg): 794.97 lm

%lum = 99.6%

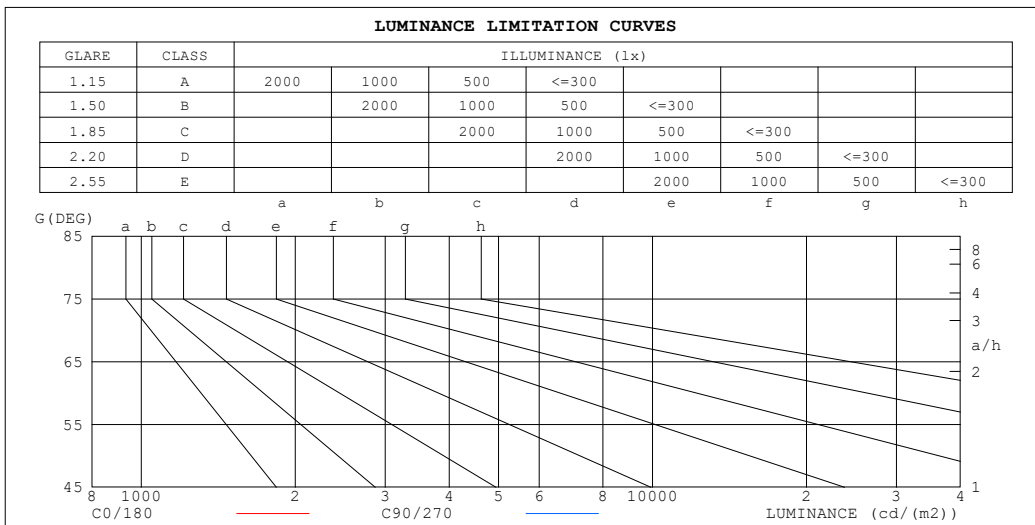
%lamp = 99.6%

C Range: 0 - 360DEG
 C Interval: 15.0DEG
 Test Speed: HIGH
 Temperature:25.3°C
 Operators:DAMIN
 Test Date:2023-12-20

γ Range: 0 - 90DEG
 γ Interval: 1.0DEG
 Test System:EVERFINE GO-2000B_V1 SYSTEM V2.00.473
 Humidity:65.0%
 Test Distance:9.401m [K=1.0000]
 Remarks:

LUMINANCE LIMITATION CURVES

Test:U:220.39V I:0.0611A P:6.8939W PF:0.5123 Freq:50.00Hz Lamp Flux:798.228x1 lm		
NAME:	TYPE: 射灯	WEIGHT:
SPEC.:	DIM.:	SERIAL No.:
MFR.: EVERFINE	SUR.:	Shielding Angle:



LUMINANCE cd/(m2)		
G (DEG)	C0/180	C90/270
85	80	91
80	49	55
75	56	45
70	59	57
65	64	61
60	119	103
55	193	174
50	270	246
45	1013	598

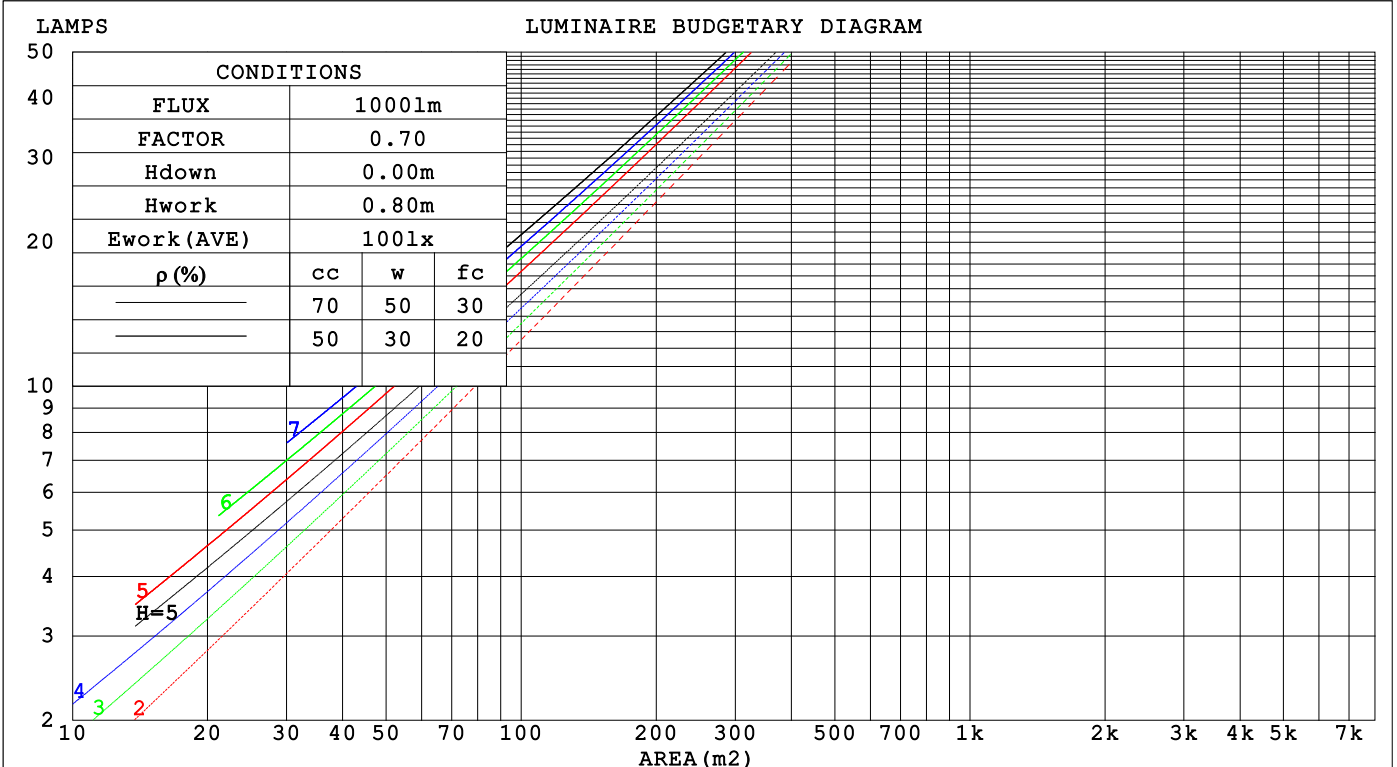
C Range: 0 - 360DEG
 C Interval: 15.0DEG
 Test Speed: HIGH
 Temperature:25.3°C
 Operators:DAMIN
 Test Date:2023-12-20

γ Range: 0 - 90DEG
 γ Interval: 1.0DEG
 Test System:EVERFINE GO-2000B_V1 SYSTEM V2.00.473
 Humidity:65.0%
 Test Distance:9.401m [K=1.0000]
 Remarks:

CU AND LUMINAIRE BUDGETARY ESTIMATE DIAGRAM

Test:U:220.39V I:0.0611A P:6.8939W PF:0.5123 Freq:50.00Hz Lamp Flux:798.228x1 lm		
NAME:	TYPE: 射灯	WEIGHT:
SPEC.:	DIM.:	SERIAL No.:
MFR.: EVERFINE	SUR.:	Shielding Angle:

pcc	80%			70%			50%			30%			10%			0
pw	50%	30%	10%	50%	30%	10%	50%	30%	10%	50%	30%	10%	50%	30%	10%	0
pfc	20%			20%			20%			20%			20%			0
RCR	RCR:Room Cavity Ratio						Coefficients of Utilization(CU)									
0.0	1.19	1.19	1.19	1.16	1.16	1.16	1.11	1.11	1.11	1.06	1.06	1.06	1.02	1.02	1.02	1.00
1.0	1.11	1.09	1.07	1.09	1.07	1.05	1.05	1.03	1.02	1.01	.00	.99	.98	.97	.96	.94
2.0	1.04	1.00	.97	1.02	.99	.96	.99	.96	.94	.96	.94	.92	.93	.92	.90	.88
3.0	.98	.93	.89	.96	.92	.88	.94	.90	.87	.91	.88	.86	.89	.87	.84	.83
4.0	.92	.87	.83	.91	.86	.82	.89	.85	.81	.87	.83	.80	.85	.82	.79	.78
5.0	.87	.81	.77	.86	.81	.77	.84	.80	.76	.82	.79	.76	.81	.78	.75	.73
6.0	.82	.76	.72	.81	.76	.72	.80	.75	.72	.78	.74	.71	.77	.74	.71	.69
7.0	.78	.72	.68	.77	.72	.68	.76	.71	.68	.75	.71	.67	.74	.70	.67	.66
8.0	.74	.68	.65	.73	.68	.65	.72	.68	.64	.71	.67	.64	.70	.67	.64	.62
9.0	.70	.65	.61	.70	.65	.61	.69	.64	.61	.68	.64	.61	.67	.64	.61	.59
10.0	.67	.62	.58	.67	.62	.58	.66	.61	.58	.65	.61	.58	.65	.61	.58	.57



C Range: 0 - 360DEG
 C Interval: 15.0DEG
 Test Speed: HIGH
 Temperature:25.3°C
 Operators:DAMIN
 Test Date:2023-12-20

γ Range: 0 - 90DEG
 γ Interval: 1.0DEG
 Test System:EVERFINE GO-2000B_V1 SYSTEM V2.00.473
 Humidity:65.0%
 Test Distance:9.401m [K=1.0000]
 Remarks:

WEC AND CCEC

Test:U:220.39V I:0.0611A P:6.8939W PF:0.5123 Freq:50.00Hz		
Lamp Flux:798.228x1 lm		
NAME:	TYPE: 射灯	WEIGHT:
SPEC.:	DIM.:	SERIAL No.:
MFR.: EVERFINE	SUR.:	Shielding Angle:

ρ_{CC}	80%			70%			50%			30%			10%			0
ρ_w	50%	30%	10%	50%	30%	10%	50%	30%	10%	50%	30%	10%	50%	30%	10%	0
ρ_{fc}	20%			20%			20%			20%			20%			0
RCR	RCR:Room Cavity Ratio						Wall Exitance Coefficients(WEC)									
0.0																
1.0	.169	.096	.031	.163	.093	.029	.150	.086	.028	.139	.080	.026	.128	.074	.024	
2.0	.161	.088	.027	.156	.086	.026	.145	.081	.025	.136	.076	.024	.127	.072	.023	
3.0	.153	.082	.024	.148	.079	.024	.139	.076	.023	.131	.072	.022	.124	.068	.021	
4.0	.145	.076	.022	.141	.074	.022	.134	.071	.021	.126	.068	.020	.120	.065	.020	
5.0	.138	.070	.020	.135	.069	.020	.128	.067	.020	.122	.064	.019	.116	.062	.019	
6.0	.131	.066	.019	.128	.065	.019	.123	.063	.018	.117	.061	.018	.112	.059	.018	
7.0	.125	.062	.018	.123	.061	.017	.117	.059	.017	.113	.058	.017	.108	.056	.017	
8.0	.120	.058	.016	.117	.058	.016	.113	.056	.016	.108	.055	.016	.104	.054	.016	
9.0	.114	.055	.015	.112	.055	.015	.108	.054	.015	.104	.052	.015	.101	.051	.015	
10.0	.110	.053	.015	.108	.052	.015	.104	.051	.014	.101	.050	.014	.097	.049	.014	

ρ_{CC}	80%			70%			50%			30%			10%			0
ρ_w	50%	30%	10%	50%	30%	10%	50%	30%	10%	50%	30%	10%	50%	30%	10%	0
ρ_{fc}	20%			20%			20%			20%			20%			0
RCR	RCR:Room Cavity Ratio						Ceiling Cavity Exitance Coefficients(CCEC)									
0.0	.190	.190	.190	.163	.163	.163	.111	.111	.111	.064	.064	.064	.020	.020	.020	
1.0	.171	.157	.145	.146	.135	.125	.100	.093	.087	.057	.054	.050	.018	.017	.016	
2.0	.155	.133	.114	.133	.114	.098	.091	.079	.069	.052	.046	.040	.017	.015	.013	
3.0	.142	.114	.091	.122	.098	.079	.084	.068	.055	.048	.040	.033	.016	.013	.011	
4.0	.131	.099	.074	.113	.085	.064	.077	.059	.045	.045	.035	.027	.014	.011	.009	
5.0	.122	.087	.061	.105	.075	.053	.072	.053	.037	.042	.031	.022	.013	.010	.007	
6.0	.114	.077	.051	.098	.067	.044	.068	.047	.031	.039	.028	.019	.013	.009	.006	
7.0	.108	.070	.043	.093	.060	.038	.064	.042	.027	.037	.025	.016	.012	.008	.005	
8.0	.102	.063	.037	.088	.055	.032	.061	.039	.023	.035	.023	.014	.011	.007	.005	
9.0	.096	.058	.032	.083	.050	.028	.058	.035	.020	.034	.021	.012	.011	.007	.004	
10.0	.092	.054	.028	.079	.047	.025	.055	.033	.018	.032	.019	.010	.010	.006	.003	

C Range: 0 - 360DEG
 C Interval: 15.0DEG
 Test Speed: HIGH
 Temperature:25.3°C
 Operators:DAMIN
 Test Date:2023-12-20

γ Range: 0 - 90DEG
 γ Interval: 1.0DEG
 Test System:EVERFINE GO-2000B_V1 SYSTEM V2.00.473
 Humidity:65.0%
 Test Distance:9.401m [K=1.0000]
 Remarks:

UGR(Unified Glare Rating) Table

Test:U:220.39V I:0.0611A P:6.8939W PF:0.5123 Freq:50.00Hz										
Lamp Flux:798.228x1 lm										
NAME:			TYPE: 射灯				WEIGHT:			
SPEC.:			DIM.:				SERIAL No.:			
MFR.: EVERFINE			SUR.:				Shielding Angle:			
ceiling/cavity	0.7	0.7	0.5	0.5	0.3	0.7	0.7	0.5	0.5	0.3
walls	0.5	0.3	0.5	0.3	0.3	0.5	0.3	0.5	0.3	0.3
working plane	0.2	0.2	0.2	0.2	0.2	0.2	0.2	0.2	0.2	0.2
Room dimensions	Viewed crosswise					Viewed endwise				
x = 2H y = 2H	8.3	9.2	8.6	9.4	9.6	7.5	8.4	7.7	8.5	8.7
3H	8.2	9.0	8.5	9.2	9.4	7.3	8.1	7.6	8.3	8.5
4H	8.1	8.9	8.4	9.1	9.3	7.3	8.0	7.5	8.2	8.5
6H	8.0	8.8	8.3	9.0	9.3	7.2	7.9	7.5	8.1	8.4
8H	8.0	8.7	8.3	9.0	9.2	7.1	7.8	7.5	8.1	8.4
12H	8.0	8.6	8.3	8.9	9.2	7.1	7.8	7.4	8.0	8.3
4H 2H	8.1	8.9	8.4	9.1	9.3	7.2	8.0	7.5	8.2	8.5
3H	8.0	8.6	8.3	8.9	9.2	7.1	7.8	7.4	8.0	8.3
4H	7.9	8.5	8.2	8.8	9.1	7.0	7.6	7.4	7.9	8.2
6H	7.8	8.3	8.2	8.7	9.0	6.9	7.5	7.3	7.8	8.2
8H	7.8	8.3	8.1	8.6	9.0	6.9	7.4	7.3	7.8	8.1
12H	7.7	8.2	8.1	8.5	8.9	6.9	7.3	7.3	7.7	8.1
8H 4H	7.7	8.2	8.1	8.6	9.0	6.9	7.4	7.3	7.7	8.1
6H	7.7	8.1	8.1	8.5	8.9	6.8	7.2	7.2	7.6	8.0
8H	7.6	8.0	8.1	8.4	8.8	6.8	7.1	7.2	7.6	8.0
12H	7.6	7.9	8.1	8.3	8.8	6.8	7.1	7.2	7.5	8.0
12H 4H	7.7	8.1	8.1	8.5	8.9	6.8	7.3	7.2	7.7	8.0
6H	7.6	8.0	8.1	8.4	8.8	6.8	7.1	7.2	7.5	8.0
8H	7.6	7.9	8.0	8.3	8.8	6.7	7.0	7.2	7.5	8.0
Variations with the observer position at spacings(CIE Pub.117):										
S = 1.0H	+ 3.1 / -10.1					+ 2.7 / - 9.4				
1.5H	+ 5.4 / - 8.8					+ 5.1 / - 7.7				
2.0H	+ 7.5 / - 6.4					+ 5.7 / - 4.5				

CIE Pub.117, 798.2 lm Total Lamp Luminous Flux Correct (8log(F/F0) = -0.8)
 Area: 0.1 m2

C Range: 0 - 360DEG
 C Interval: 15.0DEG
 Test Speed: HIGH
 Temperature:25.3°C
 Operators:DAMIN
 Test Date:2023-12-20

γ Range: 0 - 90DEG
 γ Interval: 1.0DEG
 Test System:EVERFINE GO-2000B_V1 SYSTEM V2.00.473
 Humidity:65.0%
 Test Distance:9.401m [K=1.0000]
 Remarks:

UTILIZATION FACTORS TABLE

Test:U:220.39V I:0.0611A P:6.8939W PF:0.5123 Freq:50.00Hz Lamp Flux:798.228x1 lm		
NAME:	TYPE: 射灯	WEIGHT:
SPEC.:	DIM.:	SERIAL No.:
MFR.: EVERFINE	SUR.:	Shielding Angle:

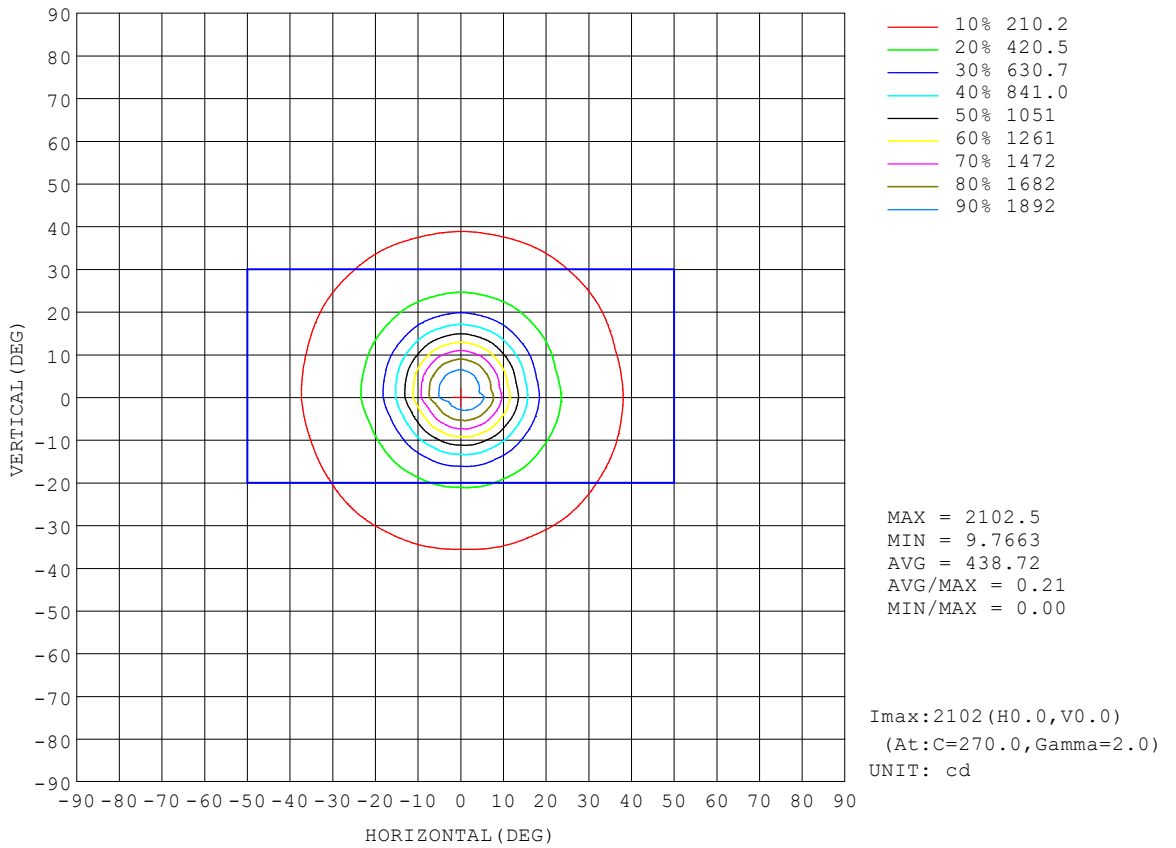
REFLECTANCE										
Ceiling	0.8	0.8	0.8	0.7	0.7	0.7	0.5	0.5	0.5	0
Walls	0.7	0.5	0.3	0.7	0.5	0.3	0.7	0.5	0.3	0
Working plane	0.2	0.2	0.2	0.2	0.2	0.2	0.2	0.2	0.2	0
ROOM INDEX	UTILIZATION FACTORS (PERCENT) $k(RI) \times RCR = 5$									
$k = 0.60$	86	79	75	85	79	75	85	79	75	72
0.80	94	88	84	93	87	84	92	87	83	79
1.00	98	93	89	98	92	89	96	92	88	84
1.25	103	97	94	102	97	93	100	96	93	88
1.50	105	101	97	104	100	97	102	98	96	91
2.00	108	104	101	107	103	100	104	101	99	93
2.50	110	106	103	108	105	102	105	102	100	94
3.00	112	108	105	110	107	104	106	104	102	96
4.00	114	111	109	112	109	107	108	106	104	97
5.00	115	113	111	113	111	109	109	107	106	98
ROOM INDEX	UF(total)									Direct
According to DIN EN 13032-2 2004			Suspended				SHRNOM = 1.25			

C Range: 0 - 360DEG
 C Interval: 15.0DEG
 Test Speed: HIGH
 Temperature:25.3°C
 Operators:DAMIN
 Test Date:2023-12-20

γ Range: 0 - 90DEG
 γ Interval: 1.0DEG
 Test System:EVERFINE GO-2000B_V1 SYSTEM V2.00.473
 Humidity:65.0%
 Test Distance:9.401m [K=1.0000]
 Remarks:

ISOCANDELA DIAGRAM

Test:U:220.39V I:0.0611A P:6.8939W PF:0.5123 Freq:50.00Hz Lamp Flux:798.228x1 lm		
NAME:	TYPE: 射灯	WEIGHT:
SPEC.:	DIM.:	SERIAL No.:
MFR.: EVERFINE	SUR.:	Shielding Angle:

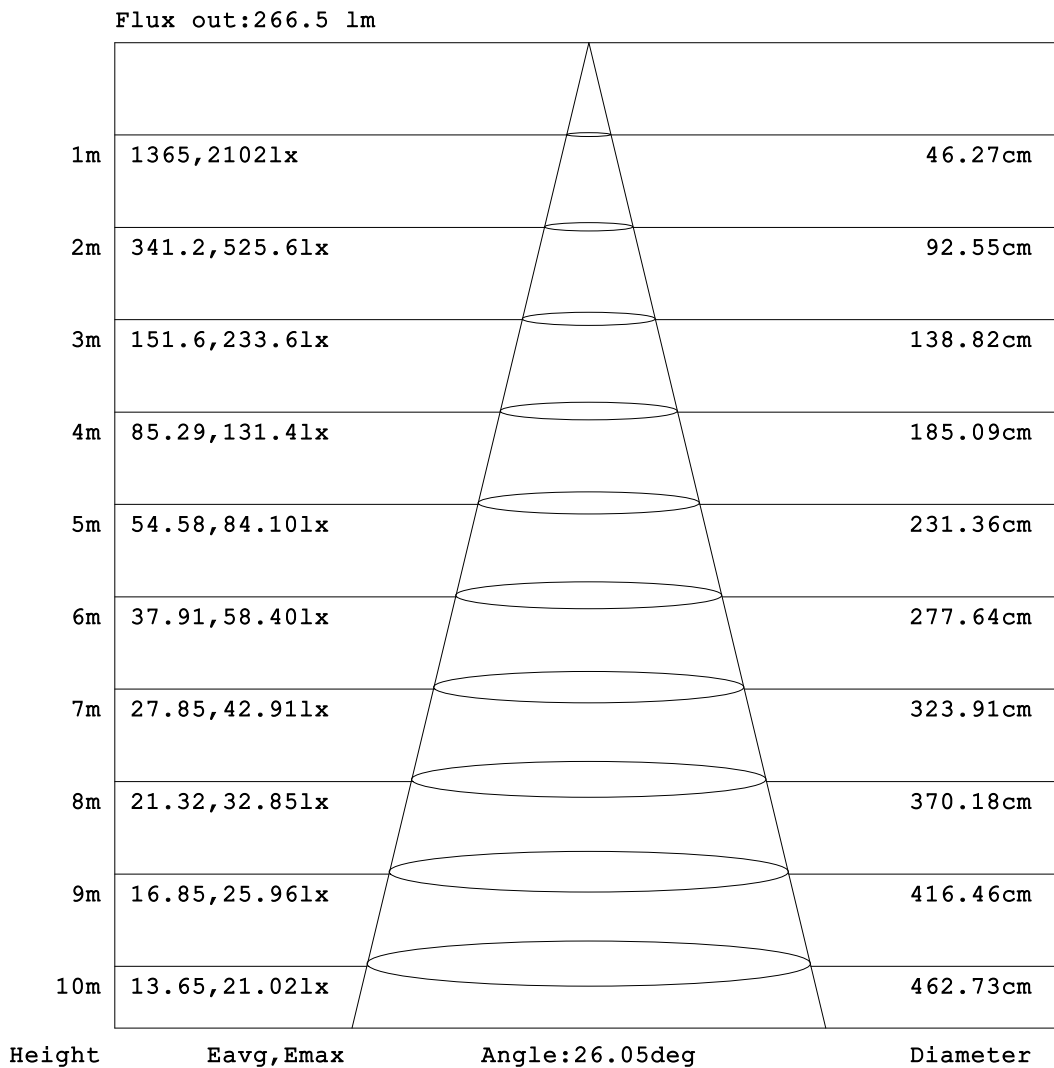


C Range: 0 - 360DEG
 C Interval: 15.0DEG
 Test Speed: HIGH
 Temperature:25.3°C
 Operators:DAMIN
 Test Date:2023-12-20

γ Range: 0 - 90DEG
 γ Interval: 1.0DEG
 Test System:EVERFINE GO-2000B_V1 SYSTEM V2.00.473
 Humidity:65.0%
 Test Distance:9.401m [K=1.0000]
 Remarks:

AAI Figure

Test:U:220.39V I:0.0611A P:6.8939W PF:0.5123 Freq:50.00Hz Lamp Flux:798.228x1 lm		
NAME:	TYPE: 射灯	WEIGHT:
SPEC.:	DIM.:	SERIAL No.:
MFR.: EVERFINE	SUR.:	Shielding Angle:



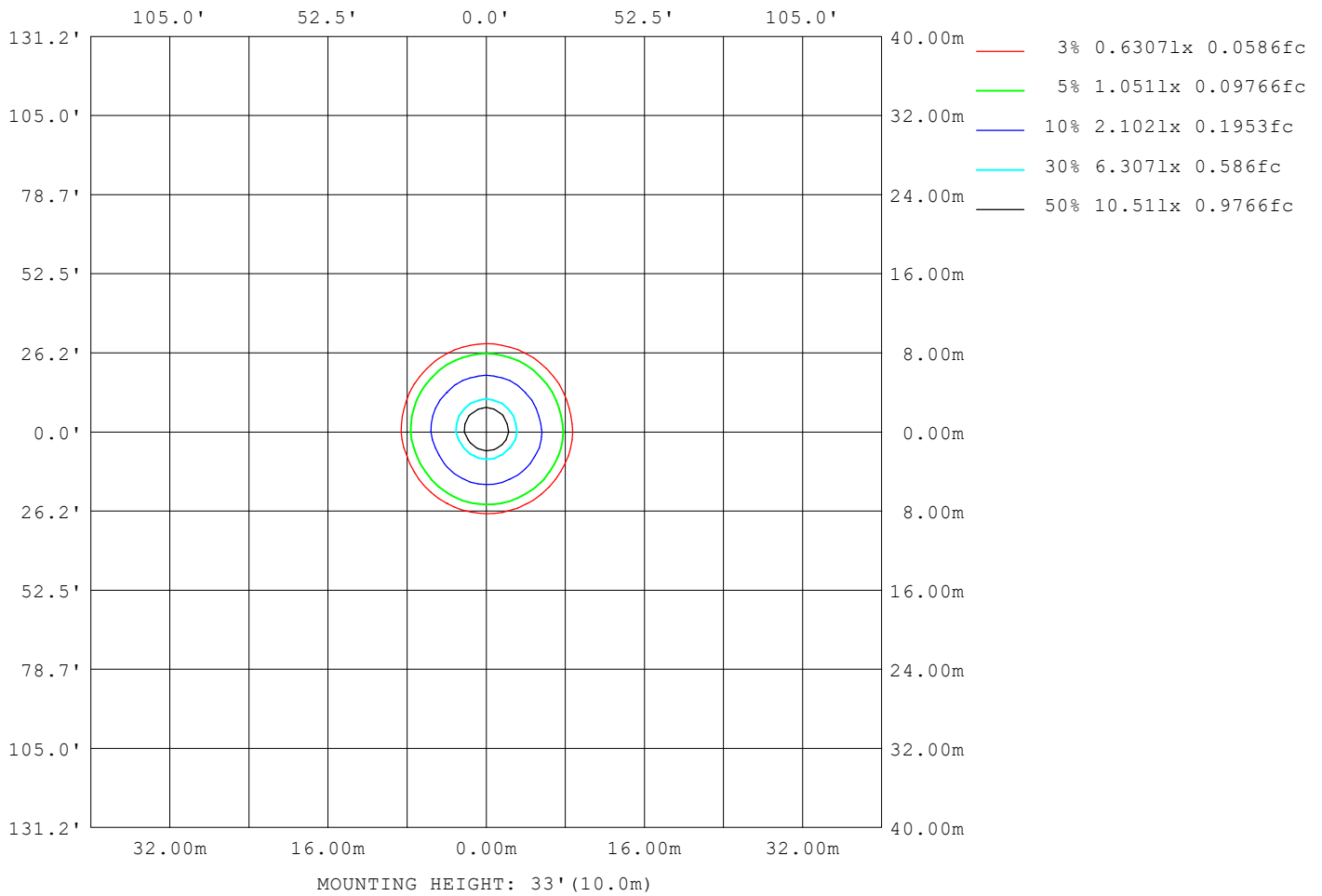
Note: The Curves indicate the illuminated area and the average illumination when the luminaire is at different distance.

C Range: 0 - 360DEG
C Interval: 15.0DEG
Test Speed: HIGH
Temperature: 25.3°C
Operators: DAMIN
Test Date: 2023-12-20

γ Range: 0 - 90DEG
γ Interval: 1.0DEG
Test System: EVERFINE GO-2000B_V1 SYSTEM V2.00.473
Humidity: 65.0%
Test Distance: 9.401m [K=1.0000]
Remarks:

ISOLUX DIAGRAM

Test:U:220.39V I:0.0611A P:6.8939W PF:0.5123 Freq:50.00Hz Lamp Flux:798.228x1 lm		
NAME:	TYPE: 射灯	WEIGHT:
SPEC.:	DIM.:	SERIAL No.:
MFR.: EVERFINE	SUR.:	Shielding Angle:



C Range: 0 - 360DEG
 C Interval: 15.0DEG
 Test Speed: HIGH
 Temperature:25.3°C
 Operators:DAMIN
 Test Date:2023-12-20

γ Range: 0 - 90DEG
 γ Interval: 1.0DEG
 Test System:EVERFINE GO-2000B_V1 SYSTEM V2.00.473
 Humidity:65.0%
 Test Distance:9.401m [K=1.0000]
 Remarks:

LED Avg.L Report

Test:U:220.39V I:0.0611A P:6.8939W PF:0.5123 Freq:50.00Hz Lamp Flux:798.228x1 lm		
NAME:	TYPE: 射灯	WEIGHT:
SPEC.:	DIM.:	SERIAL No.:
MFR.: EVERFINE	SUR.:	Shielding Angle:

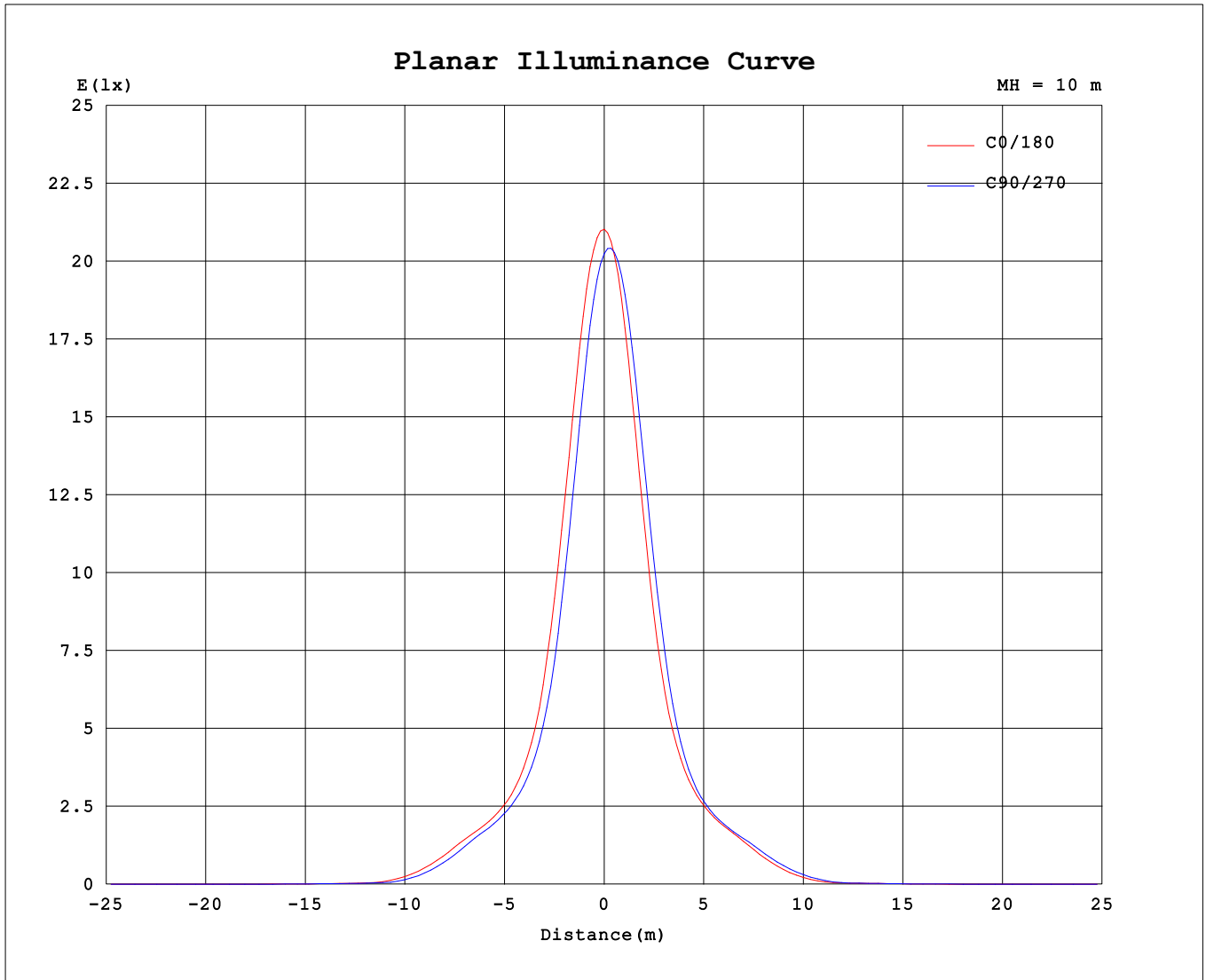
AvgL	cd/m2
L_0~180 (65) av	65
L_0~180 (75) av	55
L_0~180 (85) av	85
L_90~270 (65) av	69
L_90~270 (75) av	51
L_90~270 (85) av	78
L_45 (65) av	67
L_45 (75) av	53
L_45 (85) av	82

Standard: GB/T 29293-2012

C Range: 0 - 360DEG
 C Interval: 15.0DEG
 Test Speed: HIGH
 Temperature:25.3℃
 Operators:DAMIN
 Test Date:2023-12-20

γ Range: 0 - 90DEG
 γ Interval: 1.0DEG
 Test System:EVERFINE GO-2000B_V1 SYSTEM V2.00.473
 Humidity:65.0%
 Test Distance:9.401m [K=1.0000]
 Remarks:

Planar Illuminance Curve



C Range: 0 - 360DEG
 C Interval: 15.0DEG
 Test Speed: HIGH
 Temperature: 25.3°C
 Operators: DAMIN
 Test Date: 2023-12-20

γ Range: 0 - 90DEG
 γ Interval: 1.0DEG
 Test System: EVERFINE GO-2000B_V1 SYSTEM V2.00.473
 Humidity: 65.0%
 Test Distance: 9.401m [K=1.0000]
 Remarks:

