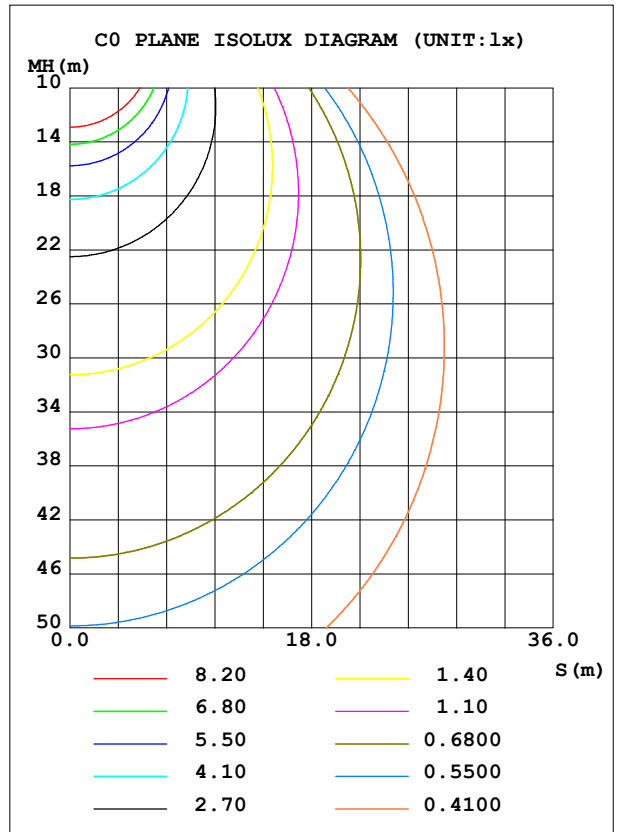
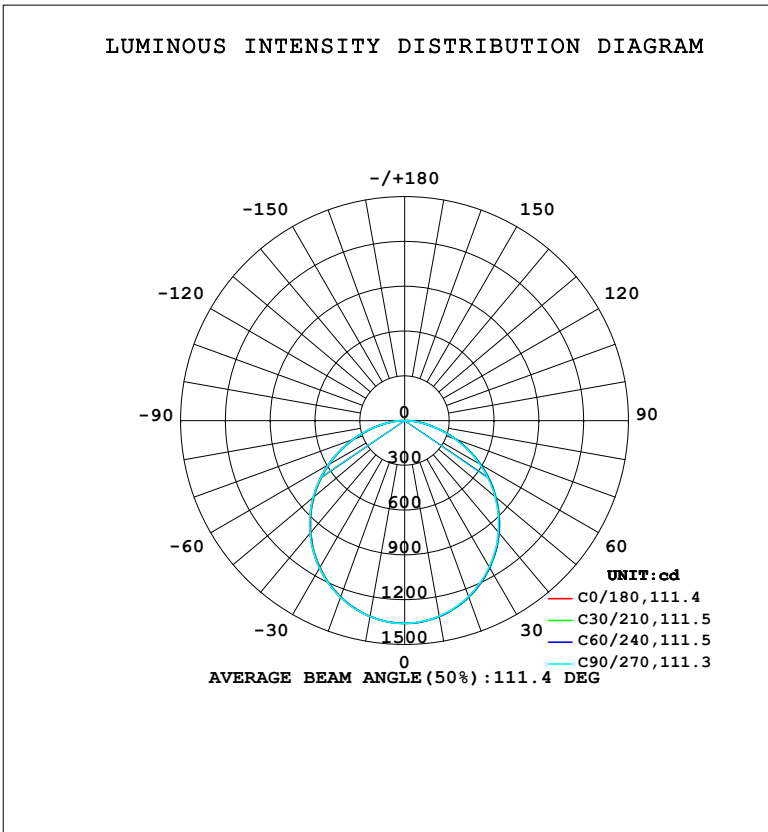


LUMINAIRE PHOTOMETRIC TEST REPORT

Test:U:220.33V I:0.1863A P:40.186W PF:0.9790 Freq:50.00Hz Lamp Flux:3835.9x1 lm		
NAME:	TYPE: 面板灯	WEIGHT:
SPEC.:	DIM.:	SERIAL No.:
MFR.: EVERFINE	SUR.: 364mm	Shielding Angle:

DATA OF LAMP		PHOTOMETRIC DATA				Eff: 95.45 lm/W
MODEL	105CR	I _{max} (cd)	1358	S/MH (C0/180)	1.24	
NOMINAL POWER (W)	40	LOR (%)	100.0	S/MH (C90/270)	1.25	
RATED VOLTAGE (V)	220	TOTAL FLUX (lm)	3835.9	η UP, DN (C0-180)	0.0,49.8	
NOMINAL FLUX (lm)	3835.9	CIE CLASS	DIRECT	η UP, DN (C180-360)	0.0,50.2	
LAMPS INSIDE	1	η up (%)	0.0	CIBSE SHR NOM	1.25	
TEST VOLTAGE (V)	219.5	η down (%)	100.0	CIBSE SHR MAX	1.35	



C Range: 0 - 360DEG
 C Interval: 15.0DEG
 Test Speed: HIGH
 Temperature: 25.3°C
 Operators: DAMIN
 Test Date: 2023-12-23

γ Range: 0 - 90DEG
 γ Interval: 1.0DEG
 Test System: EVERFINE GO-2000B_V1 SYSTEM V2.00.473
 Humidity: 65.0%
 Test Distance: 9.401m [K=1.0000]
 Remarks:

ZONAL FLUX DIAGRAM

ZONAL FLUX DIAGRAM:

γ	C0	C45	C90	C135	C180	C225	C270	C315	γ	Φ zone	Φ total	%lum,lamp
10	1333	1332	1330	1330	1331	1332	1333	1333	0- 10	128.4	128.4	3.35,3.35
20	1259	1258	1253	1253	1255	1257	1259	1259	10- 20	366.9	495.3	12.9,12.9
30	1140	1140	1133	1132	1135	1138	1141	1140	20- 30	553.9	1049	27.4,27.4
40	984.3	983.9	975.9	974.8	978.9	982.7	986.4	984.5	30- 40	665.3	1715	44.7,44.7
50	798.7	798.3	789.3	788.2	792.5	797.2	801.2	799.3	40- 50	687.7	2402	62.6,62.6
60	589.4	589.0	579.3	578.7	582.8	587.1	592.2	589.2	50- 60	619.4	3022	78.8,78.8
70	366.3	366.7	356.3	356.6	360.8	364.6	369.8	366.6	60- 70	470.1	3492	91,91
80	155.5	154.5	146.9	145.6	149.6	154.1	157.0	155.0	70- 80	269.1	3761	98,98
90	3.154	2.409	2.394	2.381	2.861	2.879	3.601	3.997	80- 90	75.01	3836	100,100
100									90-100			
110									100-110			
120									110-120			
130									120-130			
140									130-140			
150									140-150			
160									150-160			
170									160-170			
180									170-180			
DEG	LUMINOUS INTENSITY:cd									UNIT:lm		

Conical surface Flux(90deg): 2061.4 lm

%lum = 53.7%

%lamp = 53.7%

Conical surface Flux(130deg): 3279.6 lm

%lum = 85.5%

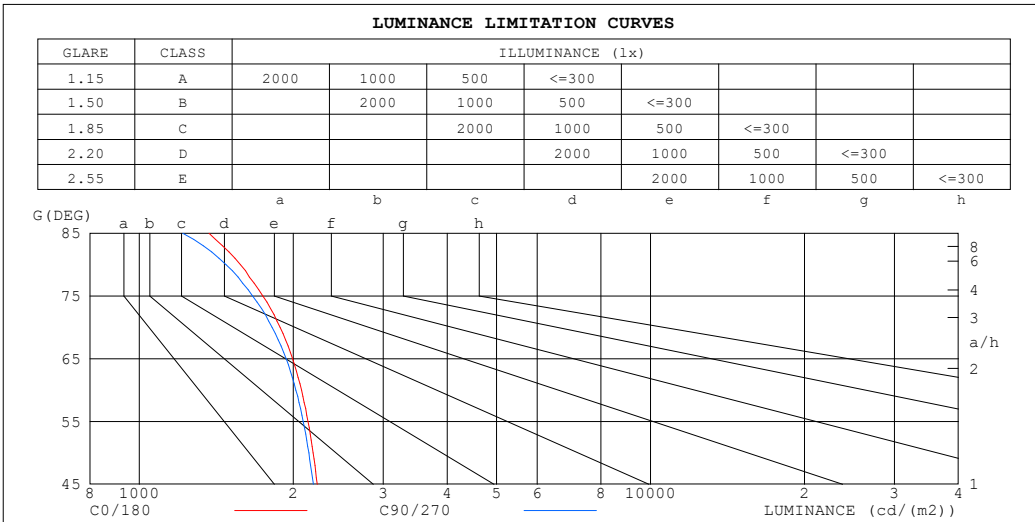
%lamp = 85.5%

C Range: 0 - 360DEG
 C Interval: 15.0DEG
 Test Speed: HIGH
 Temperature:25.3°C
 Operators:DAMIN
 Test Date:2023-12-23

γ Range: 0 - 90DEG
 γ Interval: 1.0DEG
 Test System:EVERFINE GO-2000B_V1 SYSTEM V2.00.473
 Humidity:65.0%
 Test Distance:9.401m [K=1.0000]
 Remarks:

LUMINANCE LIMITATION CURVES

Test:U:220.33V I:0.1863A P:40.186W PF:0.9790 Freq:50.00Hz Lamp Flux:3835.9x1 lm		
NAME:	TYPE: 面板灯	WEIGHT:
SPEC.:	DIM.:	SERIAL No.:
MFR.: EVERFINE	SUR.: 364mm	Shielding Angle:



LUMINANCE cd/(m2)		
G (DEG)	C0/180	C90/270
85	1368	1217
80	1577	1478
75	1744	1665
70	1886	1820
65	1993	1936
60	2075	2024
55	2138	2092
50	2187	2145
45	2228	2189

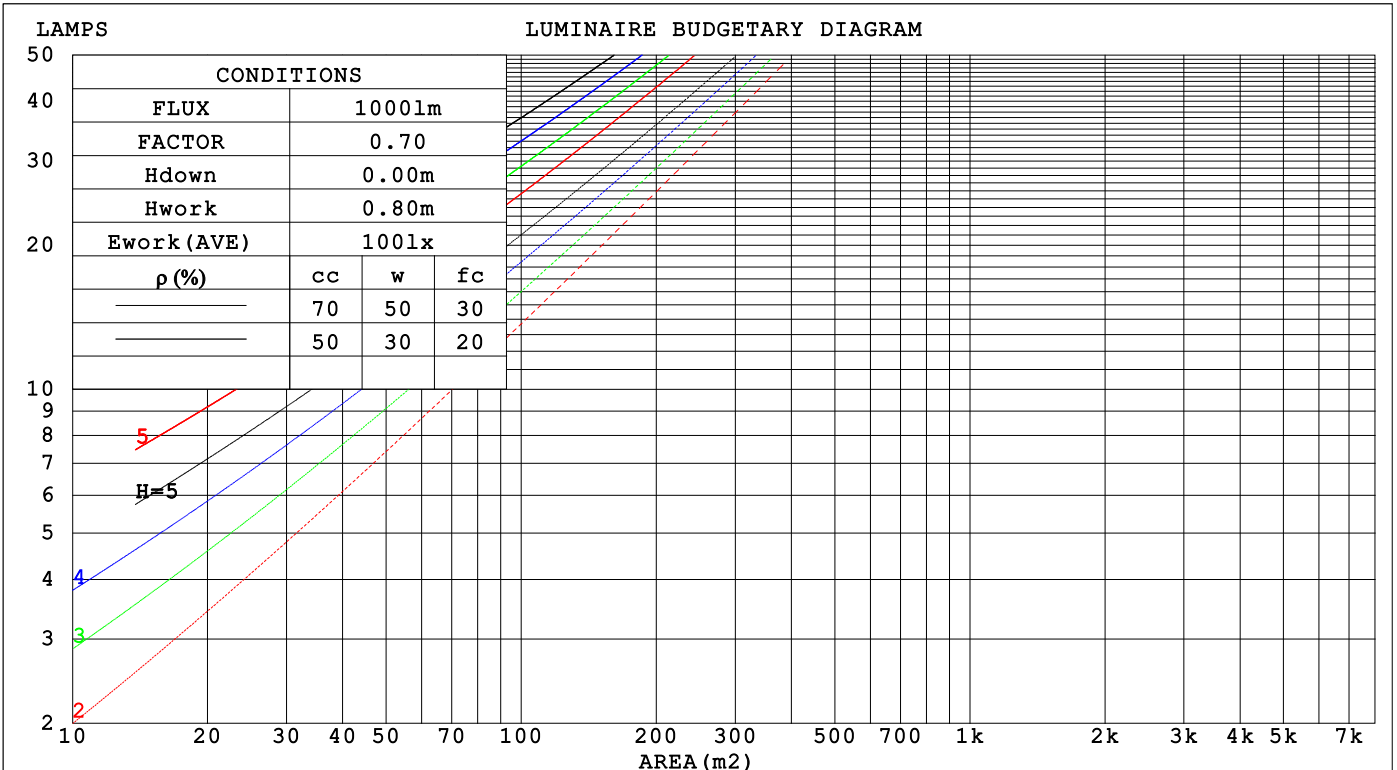
C Range: 0 - 360DEG
 C Interval: 15.0DEG
 Test Speed: HIGH
 Temperature:25.3°C
 Operators:DAMIN
 Test Date:2023-12-23

γ Range: 0 - 90DEG
 γ Interval: 1.0DEG
 Test System:EVERFINE GO-2000B_V1 SYSTEM V2.00.473
 Humidity:65.0%
 Test Distance:9.401m [K=1.0000]
 Remarks:

CU AND LUMINAIRE BUDGETARY ESTIMATE DIAGRAM

Test:U:220.33V I:0.1863A P:40.186W PF:0.9790 Freq:50.00Hz Lamp Flux:3835.9x1 lm		
NAME:	TYPE: 面板灯	WEIGHT:
SPEC.:	DIM.:	SERIAL No.:
MFR.: EVERFINE	SUR.: 364mm	Shielding Angle:

ρ_{cc}	80%			70%			50%			30%			10%			0
ρ_w	50%	30%	10%	50%	30%	10%	50%	30%	10%	50%	30%	10%	50%	30%	10%	0
ρ_{fc}	20%			20%			20%			20%			20%			0
RCR	RCR:Room Cavity Ratio						Coefficients of Utilization(CU)									
0.0	1.19	1.19	1.19	1.16	1.16	1.16	1.11	1.11	1.11	1.06	1.06	1.06	1.02	1.02	1.02	1.00
1.0	1.04	.00	.96	1.02	.98	.94	.97	.94	.91	.93	.91	.88	.90	.88	.86	.84
2.0	.90	.84	.78	.89	.82	.77	.85	.80	.75	.82	.77	.73	.79	.75	.72	.69
3.0	.79	.71	.65	.78	.70	.64	.75	.68	.63	.72	.66	.62	.69	.65	.61	.58
4.0	.70	.61	.55	.69	.61	.54	.66	.59	.54	.64	.58	.53	.62	.57	.52	.50
5.0	.63	.54	.47	.62	.53	.47	.59	.52	.46	.58	.51	.46	.56	.50	.45	.43
6.0	.56	.47	.41	.56	.47	.41	.54	.46	.40	.52	.45	.40	.50	.44	.40	.38
7.0	.51	.42	.36	.50	.42	.36	.49	.41	.36	.47	.41	.36	.46	.40	.35	.33
8.0	.47	.38	.32	.46	.38	.32	.45	.37	.32	.43	.37	.32	.42	.36	.32	.30
9.0	.43	.35	.29	.42	.34	.29	.41	.34	.29	.40	.33	.29	.39	.33	.29	.27
10.0	.40	.32	.26	.39	.31	.26	.38	.31	.26	.37	.31	.26	.36	.30	.26	.24



C Range: 0 - 360DEG
 C Interval: 15.0DEG
 Test Speed: HIGH
 Temperature:25.3°C
 Operators:DAMIN
 Test Date:2023-12-23

γ Range: 0 - 90DEG
 γ Interval: 1.0DEG
 Test System:EVERFINE GO-2000B_V1 SYSTEM V2.00.473
 Humidity:65.0%
 Test Distance:9.401m [K=1.0000]
 Remarks:

WEC AND CCEC

Test:U:220.33V I:0.1863A P:40.186W PF:0.9790 Freq:50.00Hz								
Lamp Flux:3835.9x1 lm								
NAME:			TYPE: 面板灯			WEIGHT:		
SPEC.:			DIM.:			SERIAL No.:		
MFR.: EVERFINE			SUR.: 364mm			Shielding Angle:		

ρ_{CC}	80%			70%			50%			30%			10%			0
ρ_w	50%	30%	10%	50%	30%	10%	50%	30%	10%	50%	30%	10%	50%	30%	10%	0
ρ_{fc}	20%			20%			20%			20%			20%			0
RCR	RCR:Room Cavity Ratio						Wall Exitance Coefficients(WEC)									
0.0																
1.0	.310	.176	.056	.303	.173	.055	.290	.166	.053	.278	.160	.051	.266	.154	.050	
2.0	.292	.160	.049	.286	.157	.048	.274	.152	.047	.263	.148	.046	.253	.143	.045	
3.0	.270	.144	.043	.264	.142	.043	.254	.138	.042	.245	.134	.041	.236	.130	.040	
4.0	.249	.129	.038	.244	.128	.038	.235	.125	.037	.227	.122	.037	.219	.119	.036	
5.0	.230	.117	.034	.226	.116	.034	.218	.113	.033	.210	.111	.033	.203	.109	.033	
6.0	.214	.107	.031	.210	.106	.030	.202	.104	.030	.196	.102	.030	.189	.100	.030	
7.0	.199	.098	.028	.195	.097	.028	.189	.095	.028	.183	.094	.027	.177	.092	.027	
8.0	.186	.091	.026	.183	.090	.025	.177	.088	.025	.171	.087	.025	.166	.085	.025	
9.0	.174	.084	.023	.171	.083	.023	.166	.082	.023	.161	.081	.023	.156	.079	.023	
10.0	.164	.078	.022	.161	.078	.022	.156	.077	.022	.152	.075	.021	.148	.074	.021	

ρ_{CC}	80%			70%			50%			30%			10%			0
ρ_w	50%	30%	10%	50%	30%	10%	50%	30%	10%	50%	30%	10%	50%	30%	10%	0
ρ_{fc}	20%			20%			20%			20%			20%			0
RCR	RCR:Room Cavity Ratio						Ceiling Cavity Exitance Coefficients(CCEC)									
0.0	.190	.190	.190	.163	.163	.163	.111	.111	.111	.064	.064	.064	.020	.020	.020	
1.0	.180	.156	.134	.154	.134	.116	.106	.092	.080	.061	.053	.046	.019	.017	.015	
2.0	.172	.132	.098	.148	.114	.085	.101	.079	.059	.058	.046	.035	.019	.015	.011	
3.0	.164	.114	.074	.141	.099	.064	.097	.068	.045	.056	.040	.027	.018	.013	.009	
4.0	.157	.101	.058	.135	.087	.051	.093	.061	.036	.054	.036	.021	.017	.012	.007	
5.0	.149	.091	.047	.128	.078	.041	.088	.055	.029	.051	.032	.017	.016	.010	.006	
6.0	.142	.082	.039	.122	.071	.034	.084	.050	.024	.049	.029	.014	.016	.010	.005	
7.0	.135	.075	.033	.116	.065	.029	.080	.046	.021	.047	.027	.012	.015	.009	.004	
8.0	.129	.070	.029	.111	.060	.025	.077	.042	.018	.045	.025	.011	.014	.008	.004	
9.0	.123	.065	.025	.106	.056	.022	.073	.039	.016	.043	.023	.009	.014	.008	.003	
10.0	.117	.060	.022	.101	.052	.020	.070	.037	.014	.041	.022	.008	.013	.007	.003	

C Range: 0 - 360DEG
 C Interval: 15.0DEG
 Test Speed: HIGH
 Temperature:25.3°C
 Operators:DAMIN
 Test Date:2023-12-23

γ Range: 0 - 90DEG
 γ Interval: 1.0DEG
 Test System:EVERFINE GO-2000B_V1 SYSTEM V2.00.473
 Humidity:65.0%
 Test Distance:9.401m [K=1.0000]
 Remarks:

UGR(Unified Glare Rating) Table

Test:U:220.33V I:0.1863A P:40.186W PF:0.9790 Freq:50.00Hz Lamp Flux:3835.9x1 lm		
NAME:	TYPE: 面板灯	WEIGHT:
SPEC.:	DIM.:	SERIAL No.:
MFR.: EVERFINE	SUR.: 364mm	Shielding Angle:

ceiling/cavity	0.7	0.7	0.5	0.5	0.3	0.7	0.7	0.5	0.5	0.3
walls	0.5	0.3	0.5	0.3	0.3	0.5	0.3	0.5	0.3	0.3
working plane	0.2	0.2	0.2	0.2	0.2	0.2	0.2	0.2	0.2	0.2
Room dimensions	Viewed crosswise					Viewed endwise				
x = 2H y = 2H	10.9	12.4	11.1	12.6	12.8	10.8	12.3	11.0	12.5	12.7
3H	12.4	13.8	12.7	14.0	14.3	12.2	13.7	12.5	13.9	14.1
4H	13.0	14.3	13.3	14.6	14.8	12.8	14.2	13.1	14.4	14.7
6H	13.4	14.7	13.7	14.9	15.2	13.2	14.5	13.6	14.8	15.1
8H	13.6	14.8	13.9	15.1	15.3	13.4	14.6	13.7	14.9	15.2
12H	13.6	14.8	14.0	15.1	15.4	13.4	14.6	13.8	14.9	15.2
4H 2H	11.5	12.8	11.8	13.0	13.3	11.4	12.7	11.7	13.0	13.2
3H	13.2	14.3	13.5	14.6	14.9	13.1	14.2	13.4	14.5	14.8
4H	13.9	15.0	14.3	15.3	15.6	13.8	14.8	14.1	15.1	15.5
6H	14.4	15.4	14.8	15.8	16.1	14.3	15.2	14.7	15.6	16.0
8H	14.6	15.5	15.1	15.9	16.3	14.5	15.4	14.9	15.7	16.1
12H	14.8	15.6	15.2	16.0	16.4	14.6	15.4	15.0	15.8	16.2
8H 4H	14.1	15.0	14.6	15.4	15.8	14.0	14.9	14.4	15.3	15.7
6H	14.9	15.6	15.3	16.0	16.4	14.7	15.4	15.2	15.9	16.3
8H	15.1	15.8	15.6	16.2	16.7	15.0	15.6	15.4	16.0	16.5
12H	15.3	15.9	15.8	16.4	16.8	15.2	15.7	15.6	16.2	16.6
12H 4H	14.2	15.0	14.6	15.4	15.8	14.0	14.9	14.5	15.2	15.6
6H	14.9	15.6	15.4	16.0	16.4	14.8	15.4	15.2	15.8	16.3
8H	15.2	15.8	15.7	16.2	16.7	15.1	15.6	15.5	16.1	16.6
Variations with the observer position at spacings(CIE Pub.117):										
S = 1.0H	+ 0.2 / - 0.2					+ 0.2 / - 0.2				
1.5H	+ 0.2 / - 0.3					+ 0.2 / - 0.3				
2.0H	+ 0.2 / - 0.3					+ 0.2 / - 0.3				

CIE Pub.117, 3836 lm Total Lamp Luminous Flux Correct (8log(F/F0) = 4.7)
Area: 0.57148 m2

C Range: 0 - 360DEG
C Interval: 15.0DEG
Test Speed: HIGH
Temperature:25.3°C
Operators:DAMIN
Test Date:2023-12-23

γ Range: 0 - 90DEG
γ Interval: 1.0DEG
Test System:EVERFINE GO-2000B_V1 SYSTEM V2.00.473
Humidity:65.0%
Test Distance:9.401m [K=1.0000]
Remarks:

UTILIZATION FACTORS TABLE

Test:U:220.33V I:0.1863A P:40.186W PF:0.9790 Freq:50.00Hz Lamp Flux:3835.9x1 lm		
NAME:	TYPE: 面板灯	WEIGHT:
SPEC.:	DIM.:	SERIAL No.:
MFR.: EVERFINE	SUR.: 364mm	Shielding Angle:

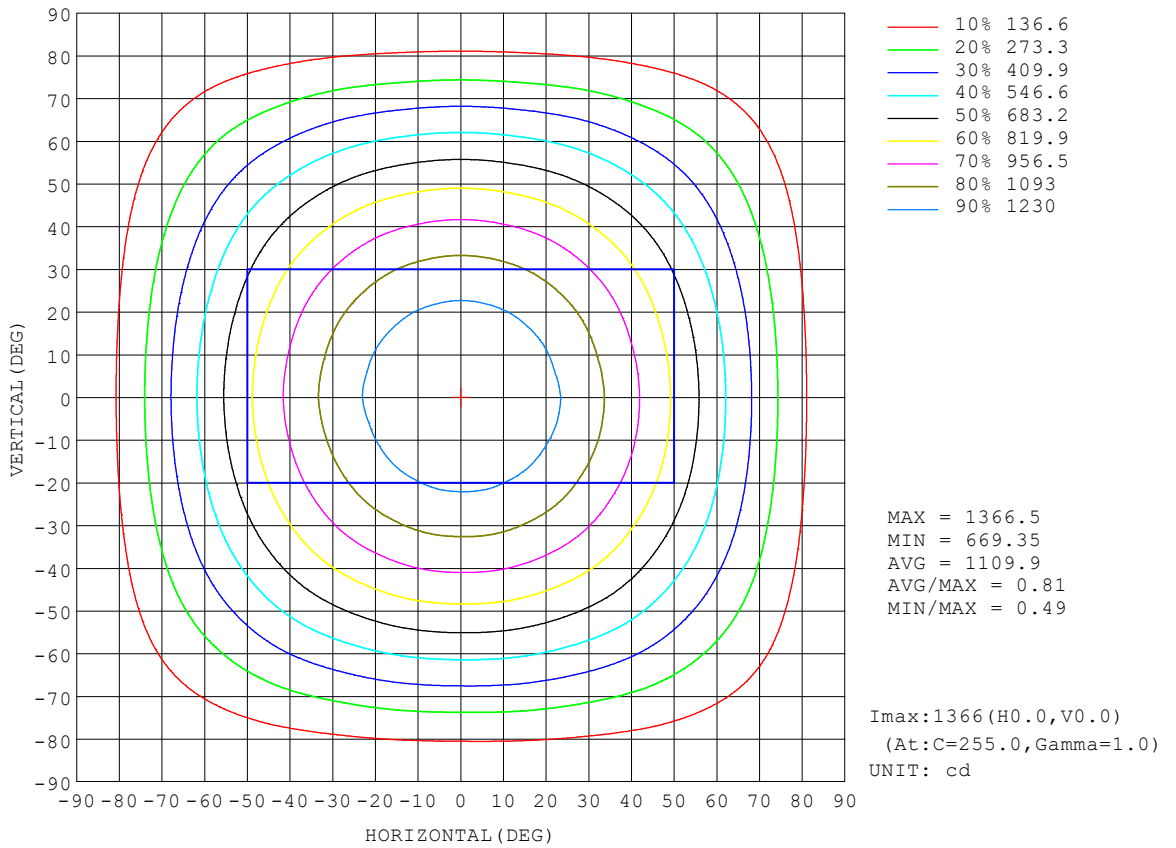
REFLECTANCE										
Ceiling	0.8	0.8	0.8	0.7	0.7	0.7	0.5	0.5	0.5	0
Walls	0.7	0.5	0.3	0.7	0.5	0.3	0.7	0.5	0.3	0
Working plane	0.2	0.2	0.2	0.2	0.2	0.2	0.2	0.2	0.2	0
ROOM INDEX	UTILIZATION FACTORS (PERCENT) $k(RI) \times RCR = 5$									
k = 0.60	58	46	39	57	46	39	56	45	39	32
0.80	68	56	49	67	56	48	65	55	48	41
1.00	76	65	58	75	64	57	73	66	57	50
1.25	83	73	65	82	72	65	79	70	64	57
1.50	88	78	71	86	77	71	83	76	70	62
2.00	95	86	80	93	85	79	90	83	78	70
2.50	99	91	85	97	90	84	93	87	82	74
3.00	102	95	90	100	94	89	96	91	87	78
4.00	106	101	96	104	99	94	100	95	92	83
5.00	109	104	100	106	102	98	102	98	95	86
ROOM INDEX	UF(total)									Direct
According to DIN EN 13032-2 2004			Suspended				SHRNOM = 1.25			

C Range: 0 - 360DEG
 C Interval: 15.0DEG
 Test Speed: HIGH
 Temperature:25.3°C
 Operators:DAMIN
 Test Date:2023-12-23

γ Range: 0 - 90DEG
 γ Interval: 1.0DEG
 Test System:EVERFINE GO-2000B_V1 SYSTEM V2.00.473
 Humidity:65.0%
 Test Distance:9.401m [K=1.0000]
 Remarks:

ISOCANDELA DIAGRAM

Test:U:220.33V I:0.1863A P:40.186W PF:0.9790 Freq:50.00Hz Lamp Flux:3835.9x1 lm		
NAME:	TYPE: 面板灯	WEIGHT:
SPEC.:	DIM.:	SERIAL No.:
MFR.: EVERFINE	SUR.: 364mm	Shielding Angle:

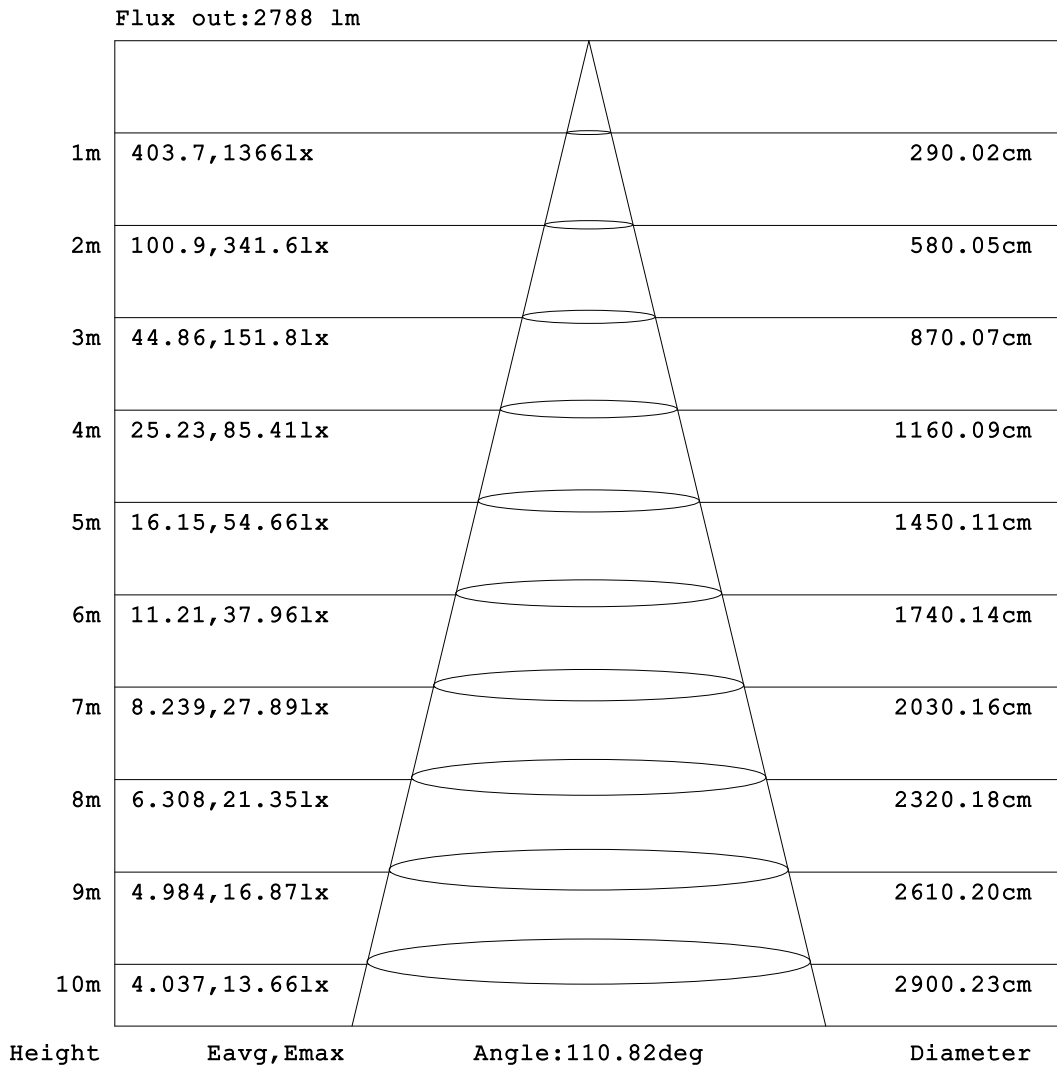


C Range: 0 - 360DEG
 C Interval: 15.0DEG
 Test Speed: HIGH
 Temperature:25.3°C
 Operators:DAMIN
 Test Date:2023-12-23

γ Range: 0 - 90DEG
 γ Interval: 1.0DEG
 Test System:EVERFINE GO-2000B_V1 SYSTEM V2.00.473
 Humidity:65.0%
 Test Distance:9.401m [K=1.0000]
 Remarks:

AAI Figure

Test:U:220.33V I:0.1863A P:40.186W PF:0.9790 Freq:50.00Hz Lamp Flux:3835.9x1 lm		
NAME:	TYPE: 面板灯	WEIGHT:
SPEC.:	DIM.:	SERIAL No.:
MFR.: EVERFINE	SUR.: 364mm	Shielding Angle:



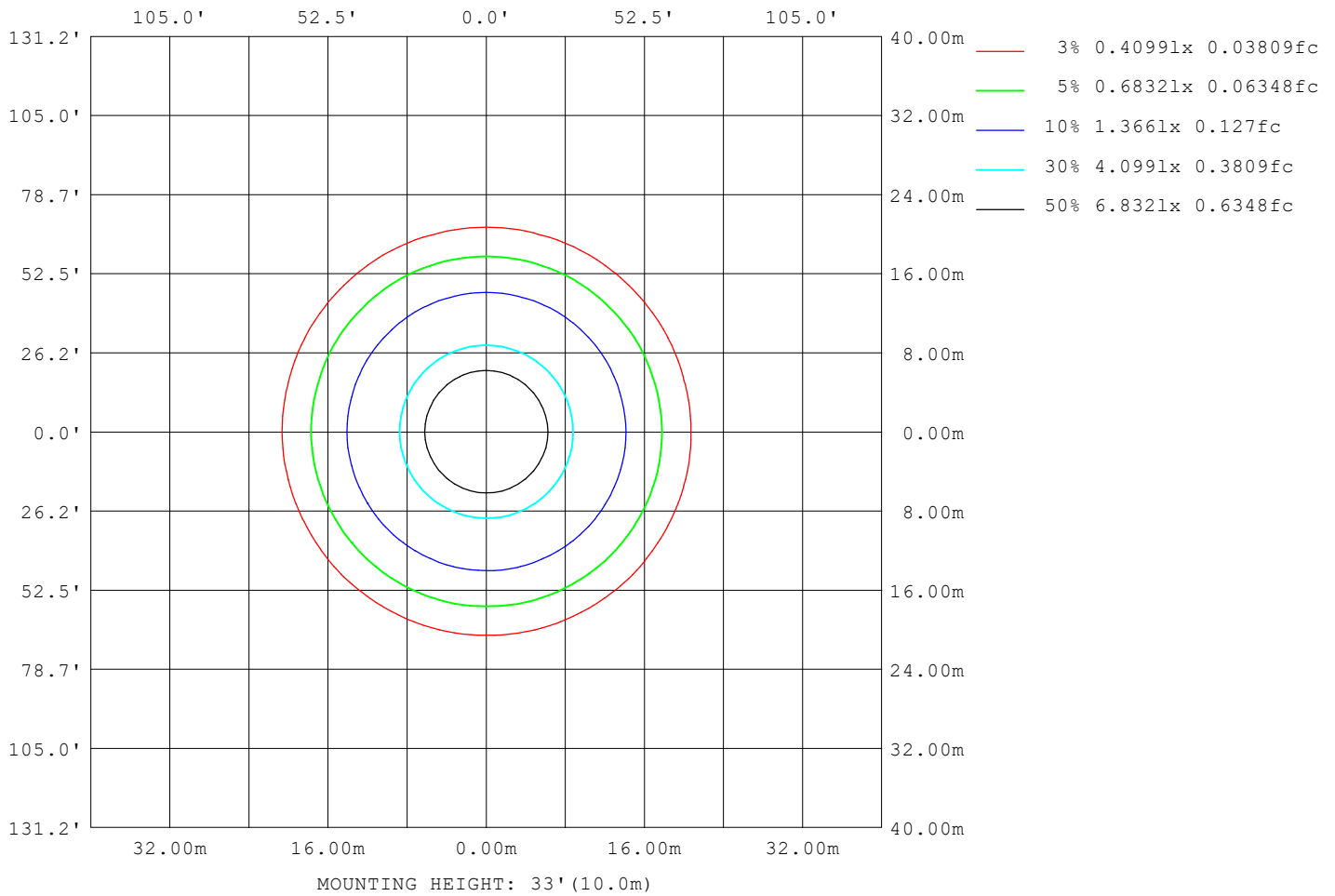
Note:The Curves indicate the illuminated area and the average illumination when the luminaire is at different distance.

C Range: 0 - 360DEG
C Interval: 15.0DEG
Test Speed: HIGH
Temperature:25.3°C
Operators:DAMIN
Test Date:2023-12-23

γ Range: 0 - 90DEG
γ Interval: 1.0DEG
Test System:EVERFINE GO-2000B_V1 SYSTEM V2.00.473
Humidity:65.0%
Test Distance:9.401m [K=1.0000]
Remarks:

ISOLUX DIAGRAM

Test:U:220.33V I:0.1863A P:40.186W PF:0.9790 Freq:50.00Hz Lamp Flux:3835.9x1 lm		
NAME:	TYPE: 面板灯	WEIGHT:
SPEC.:	DIM.:	SERIAL No.:
MFR.: EVERFINE	SUR.: 364mm	Shielding Angle:



C Range: 0 - 360DEG
 C Interval: 15.0DEG
 Test Speed: HIGH
 Temperature:25.3°C
 Operators:DAMIN
 Test Date:2023-12-23

γ Range: 0 - 90DEG
 γ Interval: 1.0DEG
 Test System:EVERFINE GO-2000B_V1 SYSTEM V2.00.473
 Humidity:65.0%
 Test Distance:9.401m [K=1.0000]
 Remarks:

LED Avg.L Report

Test:U:220.33V I:0.1863A P:40.186W PF:0.9790 Freq:50.00Hz Lamp Flux:3835.9x1 lm		
NAME:	TYPE: 面板灯	WEIGHT:
SPEC.:	DIM.:	SERIAL No.:
MFR.: EVERFINE	SUR.: 364mm	Shielding Angle:

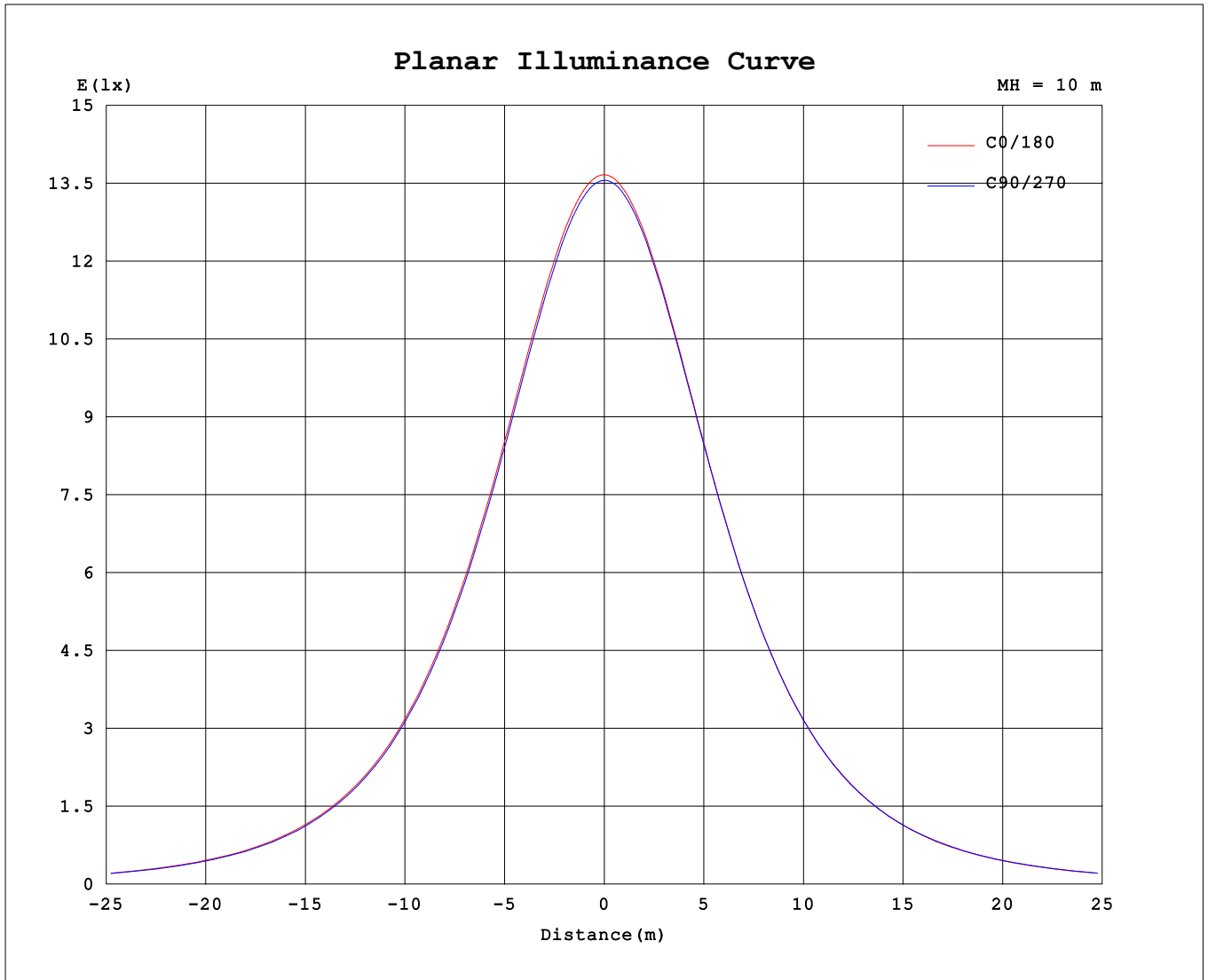
AvgL	cd/m2
L_0~180 (65) av	1968
L_0~180 (75) av	1717
L_0~180 (85) av	1310
L_90~270 (65) av	1966
L_90~270 (75) av	1712
L_90~270 (85) av	1302
L_45 (65) av	1968
L_45 (75) av	1716
L_45 (85) av	1306

Standard: GB/T 29293-2012

C Range: 0 - 360DEG
 C Interval: 15.0DEG
 Test Speed: HIGH
 Temperature:25.3°C
 Operators:DAMIN
 Test Date:2023-12-23

γ Range: 0 - 90DEG
 γ Interval: 1.0DEG
 Test System:EVERFINE GO-2000B_V1 SYSTEM V2.00.473
 Humidity:65.0%
 Test Distance:9.401m [K=1.0000]
 Remarks:

Planar Illuminance Curve



C Range: 0 - 360DEG
 C Interval: 15.0DEG
 Test Speed: HIGH
 Temperature: 25.3°C
 Operators: DAMIN
 Test Date: 2023-12-23

γ Range: 0 - 90DEG
 γ Interval: 1.0DEG
 Test System: EVERFINE GO-2000B_V1 SYSTEM V2.00.473
 Humidity: 65.0%
 Test Distance: 9.401m [K=1.0000]
 Remarks:

LUMINOUS DISTRIBUTION INTENSITY DATA

Test:U:220.33V I:0.1863A P:40.186W PF:0.9790 Freq:50.00Hz Lamp Flux:3835.9x1 lm		
NAME:	TYPE: 面板灯	WEIGHT:
SPEC.:	DIM.:	SERIAL No.:
MFR.: EVERFINE	SUR.: 364mm	Shielding Angle:

Table--1

UNIT: cd

C (DEG) γ (DEG)	0	15	30	45	60	75	90	105	120	135	150	165	180	195	210	225	240	255	270
0	1358	1358	1358	1358	1358	1358	1358	1358	1358	1358	1358	1358	1358	1358	1358	1358	1358	1358	1358
5	1352	1352	1352	1352	1351	1351	1351	1351	1350	1351	1351	1351	1351	1351	1351	1351	1352	1352	1352
10	1333	1333	1332	1332	1332	1332	1330	1331	1330	1330	1330	1331	1331	1331	1332	1332	1333	1333	1333
15	1302	1303	1301	1301	1299	1300	1298	1298	1297	1298	1297	1298	1299	1299	1300	1300	1302	1301	1302
20	1259	1260	1257	1258	1256	1256	1253	1254	1252	1253	1252	1254	1255	1255	1257	1257	1259	1258	1259
25	1204	1206	1203	1204	1201	1201	1198	1199	1197	1198	1197	1199	1200	1200	1203	1203	1205	1204	1206
30	1140	1142	1139	1140	1136	1136	1133	1134	1131	1132	1131	1134	1135	1135	1138	1138	1141	1140	1141
35	1066	1068	1065	1066	1062	1062	1059	1059	1056	1058	1057	1060	1061	1061	1065	1065	1068	1067	1068
40	984	986	983	984	980	980	976	976	973	975	974	977	979	979	983	983	986	985	986
45	895	897	894	895	891	890	886	886	883	885	884	887	889	889	893	893	896	895	897
50	799	801	798	798	794	794	789	790	787	788	787	791	793	793	797	797	800	799	801
55	697	699	695	696	692	691	687	687	684	686	685	688	690	690	695	695	698	697	699
60	589	592	588	589	584	584	579	580	576	579	577	581	583	582	588	587	591	589	592
65	479	481	477	478	473	473	468	469	466	468	466	470	472	472	477	476	480	479	481
70	366	369	365	367	361	362	356	358	353	357	354	359	361	360	366	365	369	367	370
75	256	260	255	257	251	253	247	248	244	247	244	250	251	251	256	255	259	257	260
80	155	157	154	155	151	151	147	147	144	146	145	148	150	150	154	154	156	156	157
85	67.7	68.5	66.3	66.4	63.7	63.4	60.7	60.7	58.8	59.9	59.3	61.5	62.7	63.3	65.8	66.1	68.1	67.8	69.0
90	3.15	2.75	2.53	2.41	2.41	2.40	2.39	2.39	2.38	2.38	2.39	2.39	2.86	2.85	2.86	2.88	2.92	3.38	3.60

C Range: 0 - 360DEG
C Interval: 15.0DEG
Test Speed: HIGH
Temperature:25.3℃
Operators:DAMIN
Test Date:2023-12-23

γ Range: 0 - 90DEG
γ Interval: 1.0DEG
Test System:EVERFINE GO-2000B_V1 SYSTEM V2.00.473
Humidity:65.0%
Test Distance:9.401m [K=1.0000]
Remarks:

LUMINOUS DISTRIBUTION INTENSITY DATA

Test:U:220.33V I:0.1863A P:40.186W PF:0.9790 Freq:50.00Hz Lamp Flux:3835.9x1 lm		
NAME:	TYPE: 面板灯	WEIGHT:
SPEC.:	DIM.:	SERIAL No.:
MFR.: EVERFINE	SUR.: 364mm	Shielding Angle:

Table--2

UNIT: cd

C (DEG) γ (DEG)	285	300	315	330	345															
0	1358	1358	1358	1358	1358															
5	1352	1352	1352	1353	1352															
10	1333	1334	1333	1334	1333															
15	1302	1303	1302	1303	1302															
20	1259	1260	1259	1260	1259															
25	1205	1206	1204	1206	1205															
30	1140	1141	1140	1142	1140															
35	1067	1068	1067	1068	1067															
40	985	986	985	986	985															
45	895	897	895	897	895															
50	799	801	799	801	799															
55	698	699	697	699	697															
60	590	592	589	592	590															
65	479	481	479	481	479															
70	367	370	367	369	367															
75	257	259	256	259	256															
80	155	156	155	156	155															
85	68.0	68.8	67.8	68.7	67.9															
90	3.90	3.89	4.00	3.79	3.63															

C Range: 0 - 360DEG γ Range: 0 - 90DEG
C Interval: 15.0DEG γ Interval: 1.0DEG
Test Speed: HIGH Test System:EVERFINE GO-2000B_V1 SYSTEM V2.00.473
Temperature:25.3°C Humidity:65.0%
Operators:DAMIN Test Distance:9.401m [K=1.0000]
Test Date:2023-12-23 Remarks: