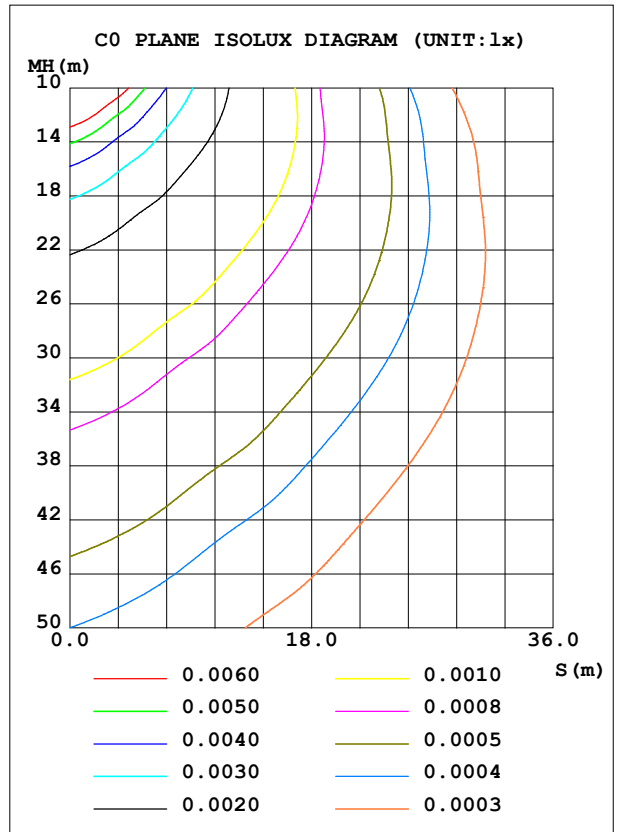
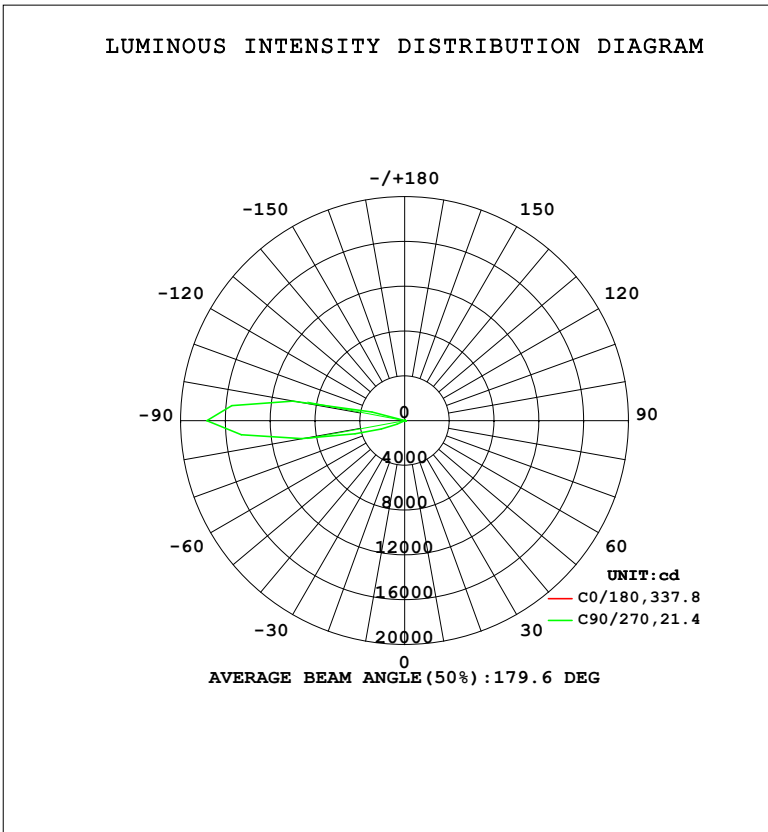


LUMINAIRE PHOTOMETRIC TEST REPORT

Test:U:220.37V I:0.0814A P:10.576W PF:0.5897 Freq:50.00Hz Lamp Flux:871.71lx1 lm		
NAME:	TYPE:	WEIGHT:
SPEC.:	DIM.:	SERIAL No.:
MFR.: EVERFINE	SUR.:	Shielding Angle:

DATA OF LAMP		PHOTOMETRIC DATA				Eff: 82.42 lm/W
MODEL	MB16-005	I _{max} (cd)	17672	S/MH (C0/180)	1.15	
NOMINAL POWER (W)	10	LOR (%)	100.0	S/MH (C90/270)	101.18	
RATED VOLTAGE (V)	220	TOTAL FLUX (lm)	871.71	η UP, DN (C0-180)	0.5, 0.5	
NOMINAL FLUX (lm)	871.711	CIE CLASS	DIFFUSE	η UP, DN (C180-360)	48.2, 50.8	
LAMPS INSIDE	1	η up (%)	48.7	CIBSE SHR NOM	0.00	
TEST VOLTAGE (V)	219.5	η down (%)	51.3	CIBSE SHR MAX	0.00	



C Range: 0 - 360DEG
 C Interval: 22.5DEG
 Test Speed: HIGH
 Temperature: 25.3°C
 Operators: DAMIN
 Test Date: 2024-05-29

γ Range: 0 - 180DEG
 γ Interval: 5.0DEG
 Test System: EVERFINE GO-2000B_V1 SYSTEM V2.00.473
 Humidity: 65.0%
 Test Distance: 9.401m [K=1.0000]
 Remarks:

ZONAL FLUX DIAGRAM

ZONAL FLUX DIAGRAM:

γ	C0	C45	C90	C135	C180	C225	C270	C315	γ	Φ zone	Φ total	%lum,lamp
10	0.0219	0.0249	0.0249	0.0249	0.0224	0.0543	0.1086	0.0728	0- 10	0.0245	0.0245	0.00,0.00
20	0.0200	0.0235	0.0249	0.0230	0.0200	0.1012	0.2465	0.1456	10- 20	0.0882	0.1127	0.01,0.01
30	0.0188	0.0161	0.0249	0.0230	0.0191	0.1613	0.4931	0.2337	20- 30	0.1956	0.3084	0.04,0.04
40	0.0186	0.0132	0.2457	0.0230	0.0191	0.2287	1.238	0.3486	30- 40	0.4196	0.7280	0.08,0.08
50	0.0186	0.0351	1.106	0.0306	0.0192	0.3255	3.841	0.5517	40- 50	1.140	1.868	0.21,0.21
60	0.0186	0.0864	1.975	0.1090	0.0198	0.4706	9.877	0.9042	50- 60	2.973	4.841	0.56,0.56
70	0.0204	0.1348	2.371	0.2430	0.0201	0.6817	224.5	1.465	60- 70	20.13	24.98	2.87,2.87
80	0.0224	0.1685	2.376	0.3847	0.0201	0.8780	935.4	1.955	70- 80	112.4	137.4	15.8,15.8
90	0.0237	0.1729	2.199	0.4441	0.0192	0.9291	1767	2.100	80- 90	310.0	447.4	51.3,51.3
100	0.0245	0.1656	1.664	0.4403	0.0186	0.6392	1017	1.850	90-100	323.8	771.2	88.5,88.5
110	0.0245	0.1612	1.307	0.3811	0.0171	0.2634	19.38	0.6941	100-110	93.82	865.0	99.2,99.2
120	0.0228	0.1144	1.268	0.2433	0.0155	0.2683	2.738	0.4996	110-120	3.804	868.8	99.7,99.7
130	0.0219	0.0484	0.7883	0.0882	0.0143	0.3058	2.026	0.4534	120-130	1.535	870.3	99.8,99.8
140	0.0209	0.0088	0.3742	0.0268	0.0134	0.2135	0.9708	0.2751	130-140	0.9088	871.2	99.9,99.9
150	0.0198	0	0.0499	0.0096	0.0126	0.0500	0.2799	0.0462	140-150	0.3081	871.6	100,100
160	0.0189	0	0	0.0057	0.0126	0	0.0990	0	150-160	0.1032	871.7	100,100
170	0.0132	0	0	0	0.0098	0	0.0090	0	160-170	0.0392	871.7	100,100
180	0.0092	0	0	0	0.0093	0	0	0	170-180	0.0107	871.7	100,100
DEG	LUMINOUS INTENSITY:X10cd									UNIT:lm		

Conical surface Flux(90deg): 1.1496 lm

%lum = 0.1%

%lamp = 0.1%

Conical surface Flux(130deg): 9.9795 lm

%lum = 1.1%

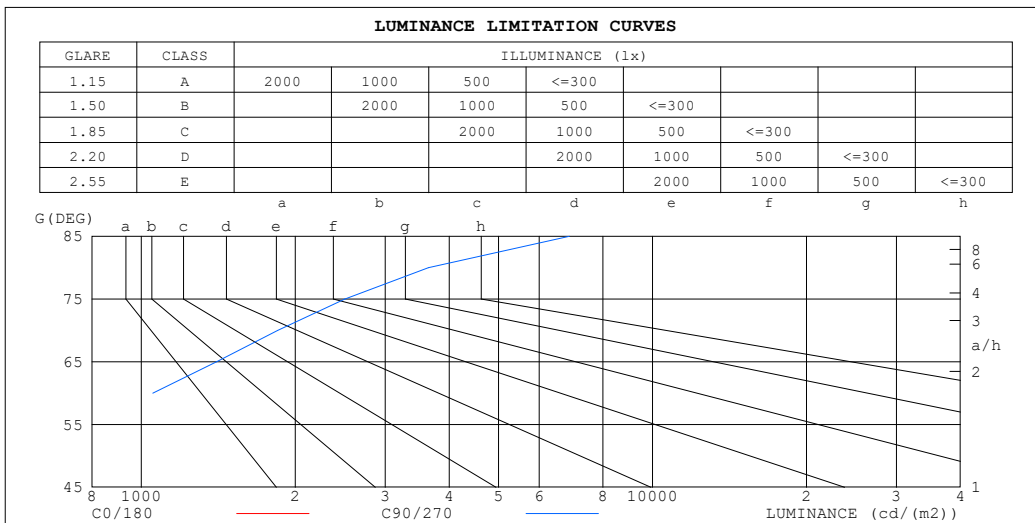
%lamp = 1.1%

C Range: 0 - 360DEG
 C Interval: 22.5DEG
 Test Speed: HIGH
 Temperature:25.3°C
 Operators:DAMIN
 Test Date:2024-05-29

γ Range: 0 - 180DEG
 γ Interval: 5.0DEG
 Test System:EVERFINE GO-2000B_V1 SYSTEM V2.00.473
 Humidity:65.0%
 Test Distance:9.401m [K=1.0000]
 Remarks:

LUMINANCE LIMITATION CURVES

Test:U:220.37V I:0.0814A P:10.576W PF:0.5897 Freq:50.00Hz Lamp Flux:871.71lx1 lm		
NAME:	TYPE:	WEIGHT:
SPEC.:	DIM.:	SERIAL No.:
MFR.: EVERFINE	SUR.:	Shielding Angle:



LUMINANCE cd/(m2)		
G (DEG)	C0/180	C90/270
85	1064	6868
80	517	3645
75	335	2501
70	239	1847
65	185	1403
60	149	1052
55	130	743
50	116	458
45	106	230

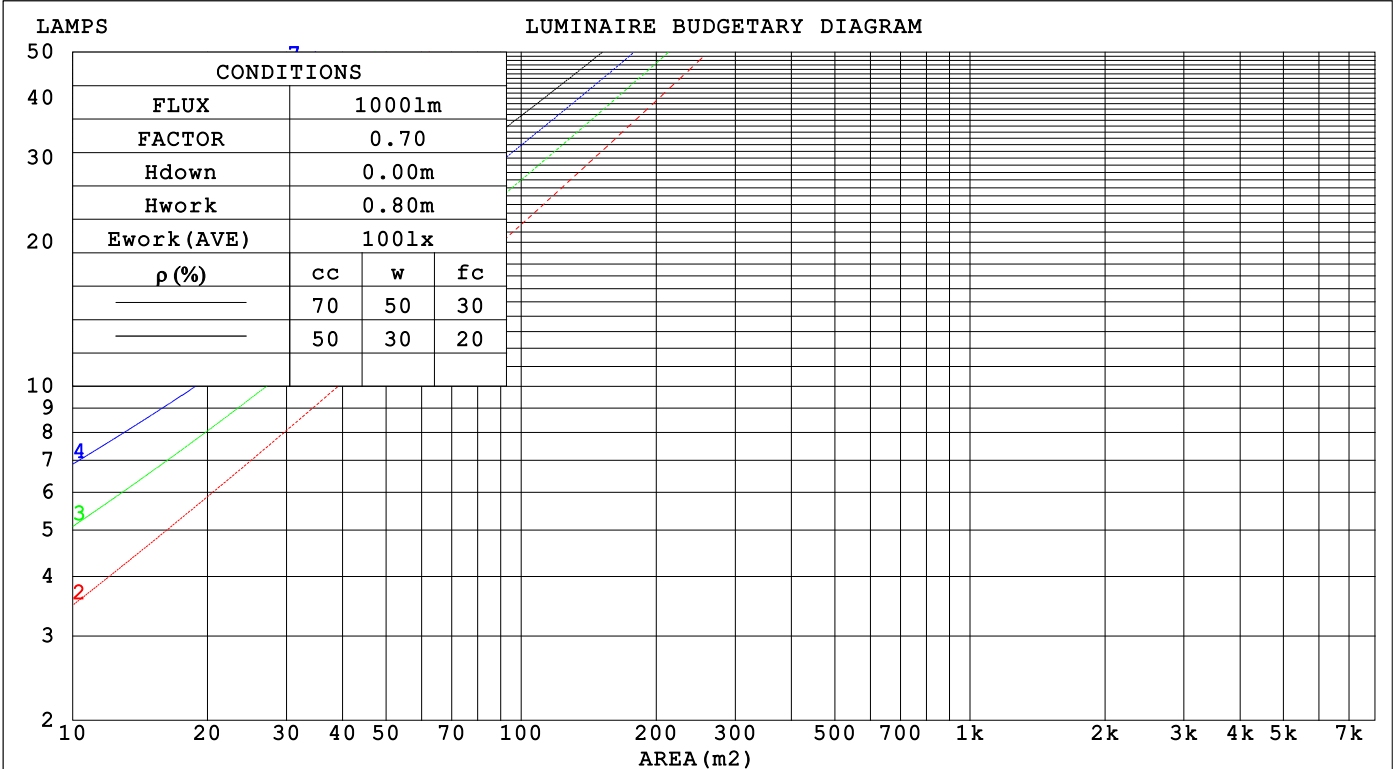
C Range: 0 - 360DEG
 C Interval: 22.5DEG
 Test Speed: HIGH
 Temperature:25.3°C
 Operators:DAMIN
 Test Date:2024-05-29

γ Range: 0 - 180DEG
 γ Interval: 5.0DEG
 Test System:EVERFINE GO-2000B_V1 SYSTEM V2.00.473
 Humidity:65.0%
 Test Distance:9.401m [K=1.0000]
 Remarks:

CU AND LUMINAIRE BUDGETARY ESTIMATE DIAGRAM

Test:U:220.37V I:0.0814A P:10.576W PF:0.5897 Freq:50.00Hz Lamp Flux:871.71lx1 lm		
NAME:	TYPE:	WEIGHT:
SPEC.:	DIM.:	SERIAL No.:
MFR.: EVERFINE	SUR.:	Shielding Angle:

ρ_{cc}	80%			70%			50%			30%			10%			0
ρ_w	50%	30%	10%	50%	30%	10%	50%	30%	10%	50%	30%	10%	50%	30%	10%	0
ρ_{fc}	20%			20%			20%			20%			20%			0
RCR	RCR:Room Cavity Ratio						Coefficients of Utilization(CU)									
0.0	1.07	1.07	1.07	.99	.99	.99	.84	.84	.84	.70	.70	.70	.57	.57	.57	.51
1.0	.73	.64	.55	.66	.57	.49	.52	.45	.39	.39	.34	.29	.28	.23	.19	.13
2.0	.60	.48	.39	.53	.43	.35	.41	.33	.26	.30	.24	.18	.20	.15	.11	.05
3.0	.51	.39	.30	.45	.35	.27	.35	.27	.20	.26	.19	.13	.17	.12	.07	.02
4.0	.44	.33	.24	.40	.29	.22	.31	.22	.16	.22	.16	.11	.15	.10	.05	.01
5.0	.39	.28	.20	.35	.25	.18	.27	.19	.13	.20	.14	.09	.13	.08	.04	.01
6.0	.35	.25	.17	.31	.22	.15	.25	.17	.11	.18	.12	.07	.12	.07	.04	.00
7.0	.32	.22	.15	.28	.20	.13	.22	.15	.10	.17	.11	.06	.11	.07	.03	.00
8.0	.29	.19	.13	.26	.17	.12	.20	.14	.09	.15	.10	.06	.11	.06	.03	.00
9.0	.26	.17	.11	.24	.16	.10	.19	.12	.08	.14	.09	.05	.10	.06	.03	.00
10.0	.24	.16	.10	.22	.14	.09	.17	.11	.07	.13	.08	.04	.09	.05	.02	.00



C Range: 0 - 360DEG
 C Interval: 22.5DEG
 Test Speed: HIGH
 Temperature:25.3°C
 Operators:DAMIN
 Test Date:2024-05-29

γ Range: 0 - 180DEG
 γ Interval: 5.0DEG
 Test System:EVERFINE GO-2000B_V1 SYSTEM V2.00.473
 Humidity:65.0%
 Test Distance:9.401m [K=1.0000]
 Remarks:

WEC AND CCEC

Test:U:220.37V I:0.0814A P:10.576W PF:0.5897 Freq:50.00Hz								
Lamp Flux:871.711x1 lm								
NAME:			TYPE:			WEIGHT:		
SPEC.:			DIM.:			SERIAL No.:		
MFR.: EVERFINE			SUR.:			Shielding Angle:		

ρ_{CC}	80%			70%			50%			30%			10%			0
ρ_w	50%	30%	10%	50%	30%	10%	50%	30%	10%	50%	30%	10%	50%	30%	10%	0
ρ_{fc}	20%			20%			20%			20%			20%			0
RCR	RCR:Room Cavity Ratio						Wall Exitance Coefficients (WEC)									
0.0																
1.0	.678	.386	.122	.655	.374	.119	.613	.351	.112	.573	.331	.106	.537	.311	.100	
2.0	.476	.261	.080	.455	.251	.077	.416	.231	.072	.380	.213	.067	.347	.196	.062	
3.0	.378	.201	.060	.359	.192	.058	.323	.175	.053	.290	.159	.049	.260	.144	.045	
4.0	.317	.165	.048	.300	.157	.046	.267	.142	.042	.237	.127	.038	.209	.114	.035	
5.0	.275	.140	.041	.259	.133	.039	.230	.120	.035	.202	.107	.032	.176	.094	.028	
6.0	.244	.122	.035	.230	.116	.033	.202	.104	.030	.177	.092	.027	.153	.081	.024	
7.0	.220	.109	.031	.207	.103	.029	.181	.092	.026	.158	.081	.024	.136	.070	.021	
8.0	.200	.098	.028	.188	.093	.026	.165	.082	.024	.143	.072	.021	.122	.063	.018	
9.0	.184	.089	.025	.173	.084	.024	.151	.075	.021	.131	.065	.019	.111	.057	.016	
10.0	.171	.082	.023	.160	.077	.022	.140	.068	.019	.121	.060	.017	.102	.052	.015	

ρ_{CC}	80%			70%			50%			30%			10%			0
ρ_w	50%	30%	10%	50%	30%	10%	50%	30%	10%	50%	30%	10%	50%	30%	10%	0
ρ_{fc}	20%			20%			20%			20%			20%			0
RCR	RCR:Room Cavity Ratio						Ceiling Cavity Exitance Coefficients (CCEC)									
0.0	.561	.561	.561	.480	.480	.480	.327	.327	.327	.188	.188	.188	.060	.060	.060	
1.0	.580	.527	.479	.496	.452	.412	.339	.311	.285	.195	.180	.166	.063	.058	.054	
2.0	.573	.507	.452	.491	.437	.391	.336	.302	.273	.194	.176	.160	.062	.057	.052	
3.0	.564	.493	.438	.483	.426	.379	.332	.296	.266	.192	.173	.157	.062	.056	.051	
4.0	.554	.483	.428	.475	.417	.372	.327	.291	.262	.189	.170	.155	.061	.055	.051	
5.0	.544	.474	.422	.467	.410	.367	.322	.286	.259	.186	.168	.154	.060	.055	.051	
6.0	.535	.467	.417	.460	.404	.363	.317	.283	.257	.184	.166	.153	.059	.054	.050	
7.0	.527	.460	.414	.453	.399	.361	.313	.280	.256	.182	.165	.152	.059	.054	.050	
8.0	.519	.455	.411	.447	.395	.359	.309	.277	.254	.180	.164	.152	.058	.054	.050	
9.0	.512	.451	.409	.441	.391	.357	.306	.275	.253	.178	.162	.151	.058	.053	.050	
10.0	.506	.447	.407	.436	.388	.355	.303	.273	.252	.176	.161	.151	.057	.053	.050	

C Range: 0 - 360DEG
 C Interval: 22.5DEG
 Test Speed: HIGH
 Temperature:25.3°C
 Operators:DAMIN
 Test Date:2024-05-29

γ Range: 0 - 180DEG
 γ Interval: 5.0DEG
 Test System:EVERFINE GO-2000B_V1 SYSTEM V2.00.473
 Humidity:65.0%
 Test Distance:9.401m [K=1.0000]
 Remarks:

UGR(Unified Glare Rating) Table

Test:U:220.37V I:0.0814A P:10.576W PF:0.5897 Freq:50.00Hz										
Lamp Flux:871.71lx1 lm										
NAME:			TYPE:				WEIGHT:			
SPEC.:			DIM.:				SERIAL No.:			
MFR.: EVERFINE			SUR.:				Shielding Angle:			
ceiling/cavity	0.7	0.7	0.5	0.5	0.3	0.7	0.7	0.5	0.5	0.3
walls	0.5	0.3	0.5	0.3	0.3	0.5	0.3	0.5	0.3	0.3
working plane	0.2	0.2	0.2	0.2	0.2	0.2	0.2	0.2	0.2	0.2
Room dimensions	Viewed crosswise					Viewed endwise				
x = 2H y = 2H	-17.2	-16.0	-16.4	-15.1	-13.9	-1.3	-0.1	-0.4	0.9	2.1
3H	-12.7	-11.5	-11.8	-10.6	-9.4	3.8	5.0	4.7	5.9	7.1
4H	-10.0	-8.9	-9.1	-7.9	-6.7	6.2	7.3	7.1	8.2	9.5
6H	-7.0	-6.0	-6.1	-5.0	-3.7	8.5	9.6	9.4	10.5	11.8
8H	-5.4	-4.4	-4.5	-3.4	-2.1	9.7	10.7	10.6	11.7	13.0
12H	-3.6	-2.6	-2.7	-1.6	-0.3	11.0	12.0	11.9	13.0	14.3
4H 2H	-11.0	-9.9	-10.1	-9.0	-7.7	-1.6	-0.4	-0.7	0.5	1.8
3H	-9.9	-8.9	-9.0	-7.9	-6.6	4.0	5.0	4.9	6.0	7.3
4H	-8.6	-7.6	-7.6	-6.6	-5.3	6.8	7.7	7.7	8.7	10.0
6H	-6.3	-5.4	-5.4	-4.4	-3.1	9.5	10.4	10.4	11.4	12.7
8H	-4.8	-3.9	-3.8	-2.9	-1.6	10.8	11.7	11.8	12.7	14.0
12H	-2.8	-2.0	-1.9	-1.0	0.4	12.3	13.1	13.3	14.2	15.5
8H 4H	-3.7	-2.9	-2.8	-1.9	-0.5	6.6	7.5	7.6	8.5	9.8
6H	-3.1	-2.3	-2.1	-1.3	0.1	9.7	10.5	10.7	11.5	12.9
8H	-2.4	-1.7	-1.4	-0.6	0.7	11.5	12.2	12.4	13.2	14.6
12H	-1.2	-0.5	-0.2	0.5	1.9	13.4	14.0	14.4	15.1	16.4
12H 4H	-1.1	-0.3	-0.2	0.7	2.0	6.5	7.3	7.5	8.4	9.7
6H	-0.6	0.1	0.3	1.1	2.5	9.7	10.4	10.7	11.4	12.8
8H	-0.3	0.4	0.7	1.4	2.8	11.5	12.1	12.5	13.2	14.5
Variations with the observer position at spacings(CIE Pub.117):										
S = 1.0H	+ 0.2 / - 0.1					+ 0.1 / - 0.1				
1.5H	+ 0.4 / - 0.2					+ 0.2 / - 0.2				
2.0H	+ 0.6 / - 0.8					+ 0.3 / - 0.4				

CIE Pub.117, 871.7 lm Total Lamp Luminous Flux Correct (8log(F/F0) = -0.5)
 Area: 0.01 m2

C Range: 0 - 360DEG
 C Interval: 22.5DEG
 Test Speed: HIGH
 Temperature:25.3°C
 Operators:DAMIN
 Test Date:2024-05-29

γ Range: 0 - 180DEG
 γ Interval: 5.0DEG
 Test System:EVERFINE GO-2000B_V1 SYSTEM V2.00.473
 Humidity:65.0%
 Test Distance:9.401m [K=1.0000]
 Remarks:

UTILIZATION FACTORS TABLE

Test:U:220.37V I:0.0814A P:10.576W PF:0.5897 Freq:50.00Hz Lamp Flux:871.711x1 lm		
NAME:	TYPE:	WEIGHT:
SPEC.:	DIM.:	SERIAL No.:
MFR.: EVERFINE	SUR.:	Shielding Angle:

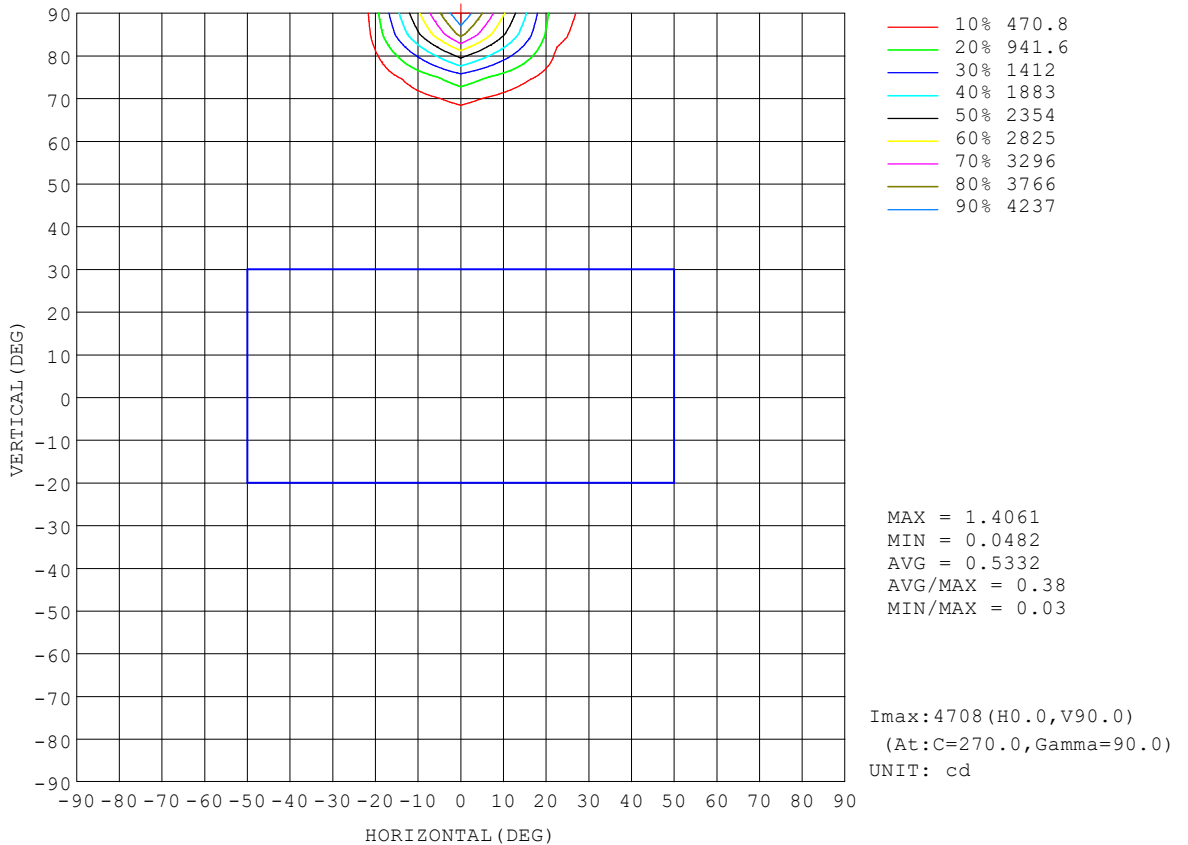
REFLECTANCE										
Ceiling	0.8	0.8	0.8	0.7	0.7	0.7	0.5	0.5	0.5	0
Walls	0.7	0.5	0.3	0.7	0.5	0.3	0.7	0.5	0.3	0
Working plane	0.2	0.2	0.2	0.2	0.2	0.2	0.2	0.2	0.2	0
ROOM INDEX	UTILIZATION FACTORS (PERCENT) $k(RI) \times RCR = 5$									
k = 0.60	29	15	7	28	15	7	26	14	6	0
0.80	36	19	9	34	18	9	30	17	8	0
1.00	41	23	12	38	22	11	34	22	10	0
1.25	46	27	15	43	26	14	37	23	13	1
1.50	50	31	18	47	29	17	40	26	15	1
2.00	57	38	24	53	35	22	45	30	19	3
2.50	62	43	29	57	40	27	48	34	23	5
3.00	66	48	34	61	44	31	51	37	26	7
4.00	72	55	41	66	51	38	55	43	32	10
5.00	76	61	48	70	56	44	58	47	37	13
ROOM INDEX	UF(total)									Direct
According to DIN EN 13032-2 2004			Suspended				SHRNOM = 1.25			

C Range: 0 - 360DEG
 C Interval: 22.5DEG
 Test Speed: HIGH
 Temperature:25.3°C
 Operators:DAMIN
 Test Date:2024-05-29

γ Range: 0 - 180DEG
 γ Interval: 5.0DEG
 Test System:EVERFINE GO-2000B_V1 SYSTEM V2.00.473
 Humidity:65.0%
 Test Distance:9.401m [K=1.0000]
 Remarks:

ISOCANDELA DIAGRAM

Test:U:220.37V I:0.0814A P:10.576W PF:0.5897 Freq:50.00Hz Lamp Flux:871.711x1 lm		
NAME:	TYPE:	WEIGHT:
SPEC.:	DIM.:	SERIAL No.:
MFR.: EVERFINE	SUR.:	Shielding Angle:

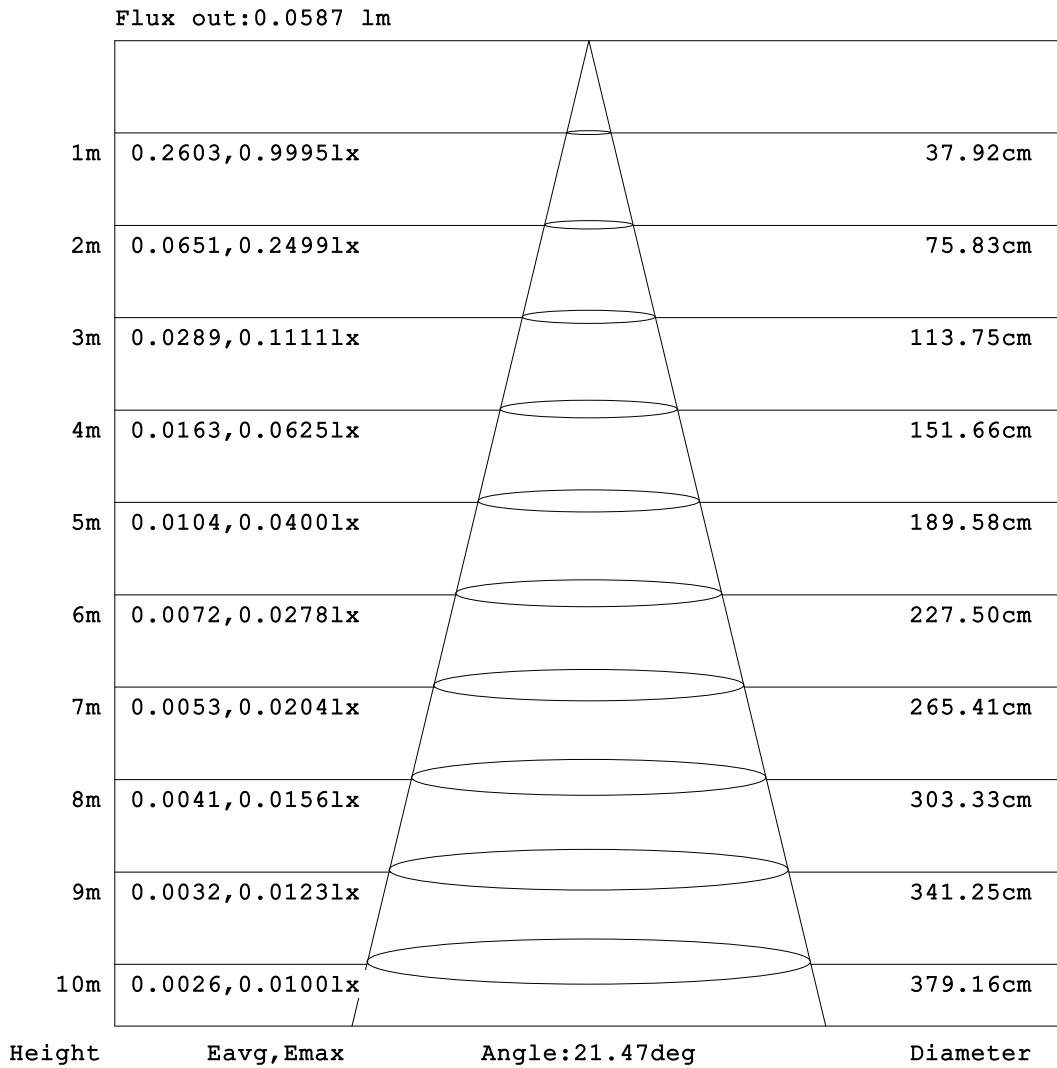


C Range: 0 - 360DEG
 C Interval: 22.5DEG
 Test Speed: HIGH
 Temperature: 25.3°C
 Operators: DAMIN
 Test Date: 2024-05-29

γ Range: 0 - 180DEG
 γ Interval: 5.0DEG
 Test System: EVERFINE GO-2000B_V1 SYSTEM V2.00.473
 Humidity: 65.0%
 Test Distance: 9.401m [K=1.0000]
 Remarks:

AAI Figure

Test:U:220.37V I:0.0814A P:10.576W PF:0.5897 Freq:50.00Hz Lamp Flux:871.711x1 lm		
NAME:	TYPE:	WEIGHT:
SPEC.:	DIM.:	SERIAL No.:
MFR.: EVERFINE	SUR.:	Shielding Angle:



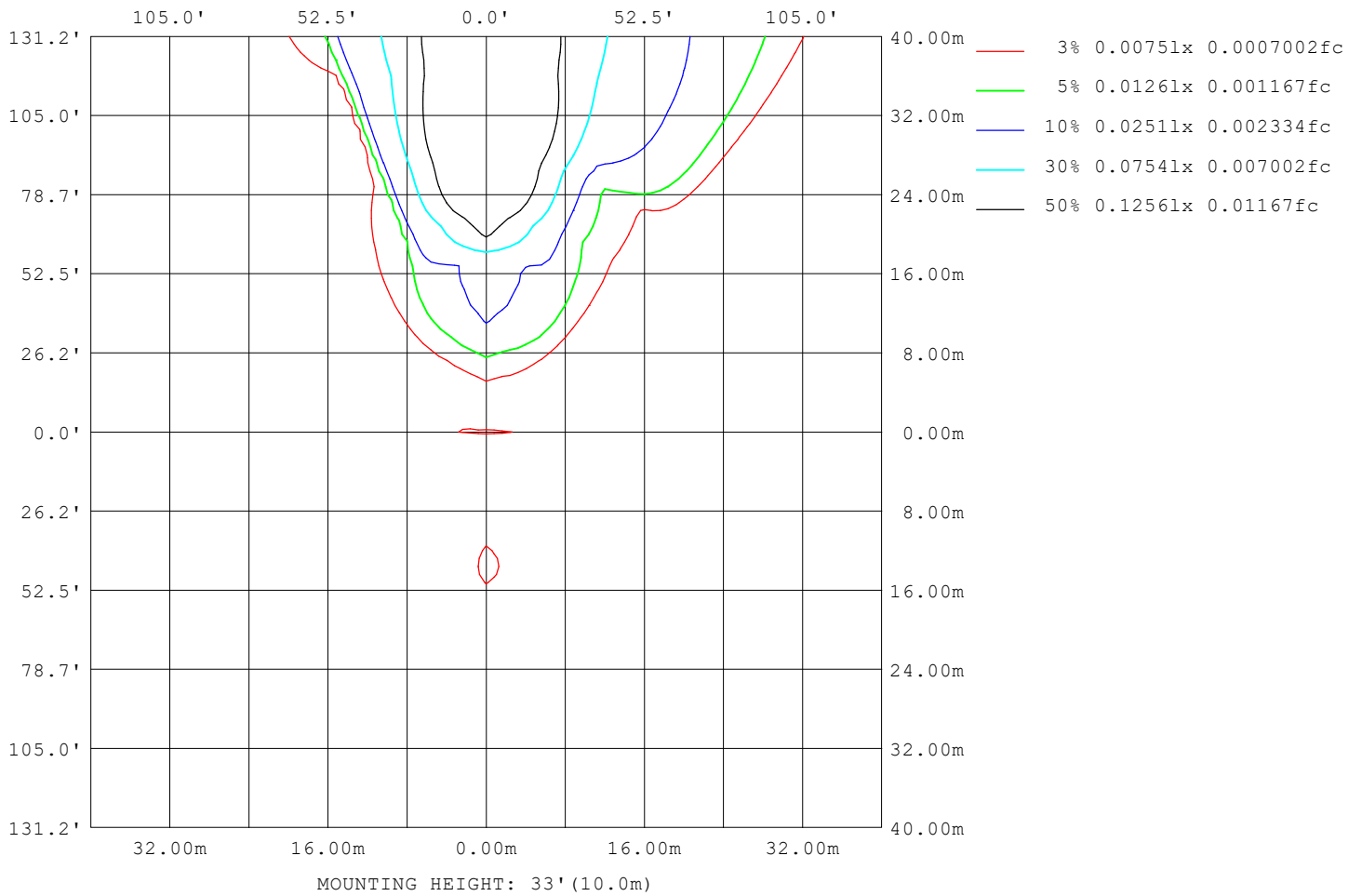
Note:The Curves indicate the illuminated area and the average illumination when the luminaire is at different distance.

C Range: 0 - 360DEG
C Interval: 22.5DEG
Test Speed: HIGH
Temperature:25.3°C
Operators:DAMIN
Test Date:2024-05-29

γ Range: 0 - 180DEG
γ Interval: 5.0DEG
Test System:EVERFINE GO-2000B_V1 SYSTEM V2.00.473
Humidity:65.0%
Test Distance:9.401m [K=1.0000]
Remarks:

ISOLUX DIAGRAM

Test:U:220.37V I:0.0814A P:10.576W PF:0.5897 Freq:50.00Hz Lamp Flux:871.711x1 lm		
NAME:	TYPE:	WEIGHT:
SPEC.:	DIM.:	SERIAL No.:
MFR.: EVERFINE	SUR.:	Shielding Angle:



C Range: 0 - 360DEG
 C Interval: 22.5DEG
 Test Speed: HIGH
 Temperature:25.3°C
 Operators:DAMIN
 Test Date:2024-05-29

γ Range: 0 - 180DEG
 γ Interval: 5.0DEG
 Test System:EVERFINE GO-2000B_V1 SYSTEM V2.00.473
 Humidity:65.0%
 Test Distance:9.401m [K=1.0000]
 Remarks:

LED Avg.L Report

Test:U:220.37V I:0.0814A P:10.576W PF:0.5897 Freq:50.00Hz Lamp Flux:871.711x1 lm		
NAME:	TYPE:	WEIGHT:
SPEC.:	DIM.:	SERIAL No.:
MFR.: EVERFINE	SUR.:	Shielding Angle:

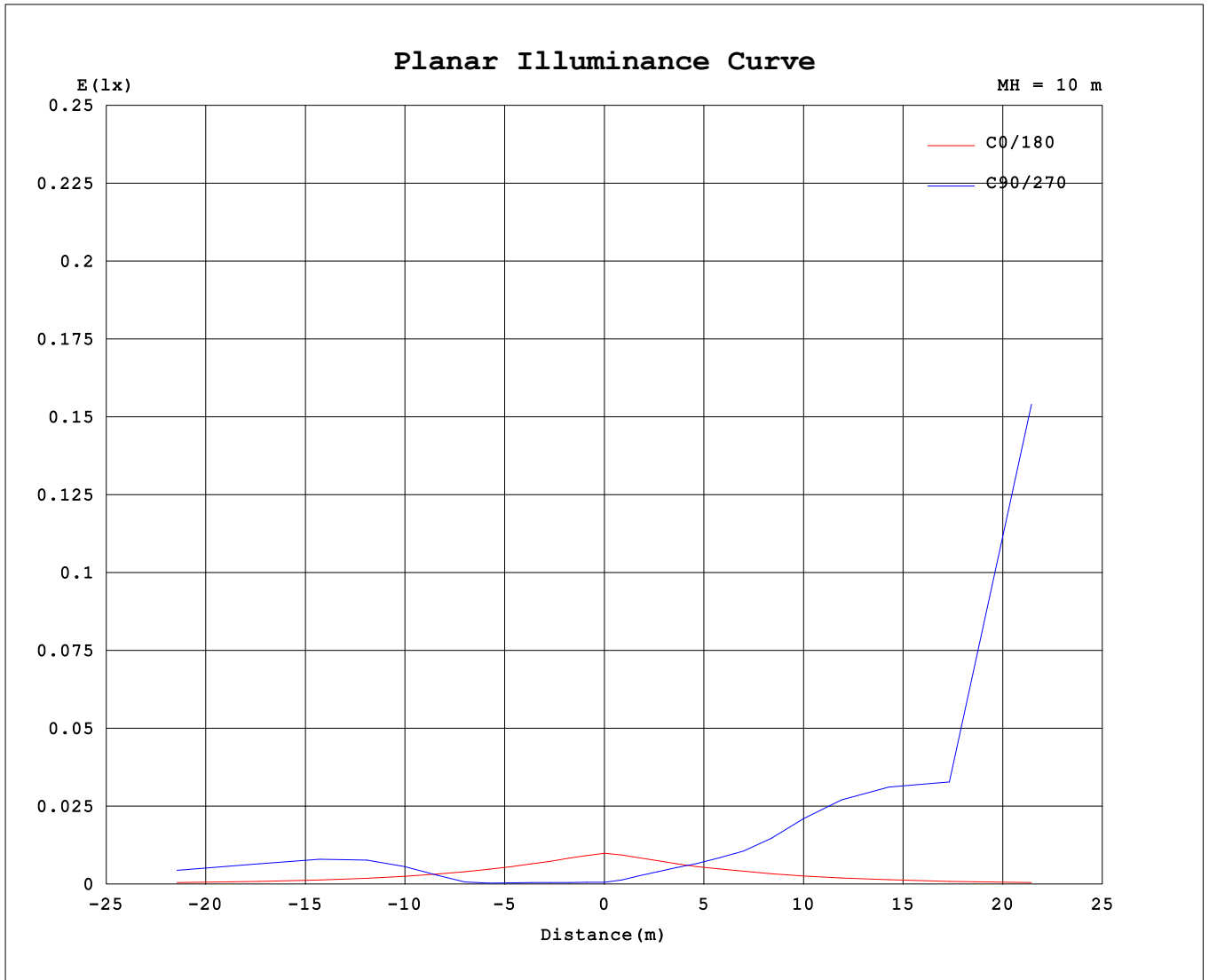
AvgL	cd/m2
L_0~180 (65) av	47
L_0~180 (75) av	81
L_0~180 (85) av	244
L_90~270 (65) av	93272
L_90~270 (75) av	894277
L_90~270 (85) av	8417242
L_45 (65) av	1200
L_45 (75) av	2894
L_45 (85) av	10418

Standard: GB/T 29293-2012

C Range: 0 - 360DEG
 C Interval: 22.5DEG
 Test Speed: HIGH
 Temperature:25.3°C
 Operators:DAMIN
 Test Date:2024-05-29

γ Range: 0 - 180DEG
 γ Interval: 5.0DEG
 Test System:EVERFINE GO-2000B_V1 SYSTEM V2.00.473
 Humidity:65.0%
 Test Distance:9.401m [K=1.0000]
 Remarks:

Planar Illuminance Curve



C Range: 0 - 360DEG
 C Interval: 22.5DEG
 Test Speed: HIGH
 Temperature: 25.3°C
 Operators: DAMIN
 Test Date: 2024-05-29

γ Range: 0 - 180DEG
 γ Interval: 5.0DEG
 Test System: EVERFINE GO-2000B_V1 SYSTEM V2.00.473
 Humidity: 65.0%
 Test Distance: 9.401m [K=1.0000]
 Remarks:

LUMINOUS DISTRIBUTION INTENSITY DATA

Test:U:220.37V I:0.0814A P:10.576W PF:0.5897 Freq:50.00Hz Lamp Flux:871.71lx1 lm		
NAME:	TYPE:	WEIGHT:
SPEC.:	DIM.:	SERIAL No.:
MFR.: EVERFINE	SUR.:	Shielding Angle:

Table--1

UNIT: x10cd

C (DEG) \ γ (DEG)	0	22.5	45	67.5	90	112.5	135	157.5	180	202.5	225	247.5	270	292.5	315	337.5			
0	0.02	0.02	0.02	0.02	0.02	0.02	0.02	0.02	0.02	0.02	0.02	0.02	0.02	0.02	0.02	0.02			
5	0.02	0.02	0.02	0.02	0.02	0.02	0.02	0.02	0.02	0.03	0.04	0.03	0.05	0.03	0.04	0.02			
10	0.02	0.01	0.02	0.02	0.02	0.02	0.02	0.02	0.02	0.03	0.05	0.08	0.11	0.10	0.07	0.03			
15	0.02	0.01	0.02	0.02	0.02	0.02	0.02	0.02	0.02	0.03	0.08	0.14	0.17	0.19	0.10	0.04			
20	0.02	0.01	0.02	0.02	0.02	0.02	0.02	0.02	0.02	0.03	0.10	0.21	0.25	0.28	0.15	0.07			
25	0.02	0.01	0.02	0.02	0.02	0.02	0.02	0.03	0.02	0.04	0.13	0.30	0.34	0.40	0.18	0.09			
30	0.02	0.01	0.02	0.04	0.02	0.03	0.02	0.03	0.02	0.04	0.16	0.40	0.49	0.55	0.23	0.11			
35	0.02	0.01	0.01	0.06	0.05	0.05	0.02	0.04	0.02	0.04	0.19	0.57	0.73	0.80	0.29	0.14			
40	0.02	0.01	0.01	0.17	0.25	0.12	0.02	0.05	0.02	0.05	0.23	0.82	1.24	1.20	0.35	0.16			
45	0.02	0.01	0.01	0.42	0.61	0.31	0.02	0.06	0.02	0.05	0.28	1.29	2.24	1.99	0.44	0.18			
50	0.02	0.01	0.04	0.80	1.11	0.68	0.03	0.06	0.02	0.05	0.33	2.10	3.84	3.29	0.55	0.20			
55	0.02	0.01	0.06	1.23	1.60	1.17	0.06	0.06	0.02	0.06	0.39	3.18	6.21	5.06	0.70	0.22			
60	0.02	0.01	0.09	1.64	1.97	1.72	0.11	0.06	0.02	0.06	0.47	4.54	9.88	7.33	0.90	0.24			
65	0.02	0.01	0.11	1.95	2.23	2.22	0.17	0.06	0.02	0.07	0.57	6.20	76.6	10.22	1.18	0.27			
70	0.02	0.01	0.13	2.15	2.37	2.60	0.24	0.06	0.02	0.07	0.68	8.34	225	18.05	1.47	0.29			
75	0.02	0.01	0.16	2.27	2.43	2.85	0.32	0.06	0.02	0.07	0.79	14.51	460	108	1.73	0.30			
80	0.02	0.01	0.17	2.32	2.38	2.98	0.38	0.06	0.02	0.08	0.88	59.7	935	215	1.95	0.31			
85	0.02	0.01	0.18	2.32	2.25	3.02	0.43	0.06	0.02	0.08	0.93	107	1465	274	2.09	0.32			
90	0.02	0.01	0.17	2.22	2.20	2.93	0.44	0.06	0.02	0.08	0.93	126	1767	303	2.10	0.33			
95	0.02	0.01	0.17	2.12	1.93	2.82	0.44	0.06	0.02	0.08	0.91	115	1550	284	2.04	0.33			
100	0.02	0.01	0.17	2.02	1.66	2.74	0.44	0.06	0.02	0.07	0.64	73.4	1017	235	1.85	0.29			
105	0.02	0.01	0.17	1.89	1.45	2.88	0.44	0.06	0.02	0.06	0.53	16.18	304	101	1.27	0.18			
110	0.02	0.01	0.16	1.60	1.31	2.83	0.38	0.06	0.02	0.06	0.26	4.54	19.38	22.69	0.69	0.16			
115	0.02	0.01	0.14	1.21	1.39	2.65	0.31	0.06	0.02	0.07	0.14	2.25	4.10	3.51	0.36	0.20			
120	0.02	0.01	0.11	0.73	1.27	2.03	0.24	0.06	0.02	0.07	0.27	1.15	2.74	2.03	0.50	0.23			
125	0.02	0.01	0.09	0.57	0.88	1.45	0.16	0.06	0.01	0.07	0.32	1.48	1.83	2.29	0.48	0.24			
130	0.02	0.01	0.05	0.47	0.79	0.91	0.09	0.05	0.01	0.06	0.31	1.42	2.03	2.07	0.45	0.24			
135	0.02	0.00	0.02	0.34	0.75	0.52	0.05	0.03	0.01	0.05	0.24	1.07	1.53	1.43	0.35	0.19			
140	0.02	0.00	0.01	0.25	0.37	0.34	0.03	0.01	0.01	0.04	0.21	0.55	0.97	0.95	0.28	0.03			
145	0.02	0.00	0.00	0.09	0.17	0.06	0.02	0.00	0.01	0.04	0.01	0.36	0.56	0.63	0.00	0.02			
150	0.02	0.00	0.00	0.01	0.05	0.00	0.01	0.00	0.01	0.03	0.05	0.32	0.28	0.43	0.05	0.01			
155	0.02	0.00	0.00	0.00	0.00	0.00	0.01	0.00	0.01	0.03	0.05	0.09	0.03	0.08	0.07	0.00			
160	0.02	0.00	0.00	0.00	0.00	0.00	0.01	0.00	0.01	0.03	0.00	0.13	0.10	0.16	0.00	0.00			
165	0.02	0.00	0.00	0.00	0.00	0.00	0.00	0.00	0.01	0.03	0.00	0.00	0.00	0.00	0.00	0.00			
170	0.01	0.01	0.00	0.00	0.00	0.00	0.00	0.00	0.01	0.03	0.00	0.00	0.01	0.00	0.00	0.00			
175	0.01	0.02	0.00	0.00	0.00	0.00	0.00	0.00	0.01	0.03	0.00	0.01	0.00	0.00	0.00	0.00			
180	0.01	0.02	0.00	0.00	0.00	0.00	0.00	0.00	0.01	0.02	0.00	0.00	0.00	0.00	0.00	0.00			

C Range: 0 - 360DEG
 C Interval: 22.5DEG
 Test Speed: HIGH
 Temperature:25.3°C
 Operators:DAMIN
 Test Date:2024-05-29

γ Range: 0 - 180DEG
 γ Interval: 5.0DEG
 Test System:EVERFINE GO-2000B_V1 SYSTEM V2.00.473
 Humidity:65.0%
 Test Distance:9.401m [K=1.0000]
 Remarks: